



**Wilmette Park District  
Parks & Recreation Committee Meeting**

*Monday, April 19, 2021  
6:30 p.m. – Online<sup>1</sup>*

## AGENDA

I. Meeting Called to Order:

Members of Committee:

Commissioner Mike Murdock, Chair  
Commissioner Cecilia Clarke  
Commissioner Amy Wolfe

Staff:

Superintendent Emily Guynn  
Superintendent Kristi Solberg

II. Approval of Minutes

A. March 15, 2021

III. Communications and Correspondence

IV. Public Comment/Recognition of Visitors

V. Unfinished Business

- A. Howard Park Dog Park
- B. Pickleball Courts and Program
- C. Keay Nature Center
- D. Solar Installation at the Community Recreation Center

VI. New Business

VII. Managers' Reports

VIII. Next Meeting – May 10, 2021

IX. Adjournment

<sup>1</sup>This meeting will be held remotely via Zoom. To participate via Zoom on the phone, please call 312-626-6799 and enter meeting ID #854 9004 3576 and passcode #703078. If you wish to participate via the Zoom software, please use the same meeting number and passcode. Public Comment will be facilitated on Zoom during the meeting.

If you are a person with a disability and need special accommodations to participate in or attend a Wilmette Park District meeting, please notify the Director's Office at 847-256-6100.

## **Wilmette Park District** **Policy for Public Comment**

The Board of Park Commissioners, in its regular or special meetings, is a deliberative body assembled to make decisions on new and pending matters affecting the District. Park Board and Committee meetings are meetings held in public, not a public meeting. The Board invites both oral and written communications from its residents.

To facilitate the conduct of Board/Committee meetings, the following procedures will be followed:

1. A section of each regular meeting is set aside for public comment and will be noted on the agenda as "Recognition of Visitors."
2. During the "Recognition of Visitors" agenda item, audience members should raise their hands and be recognized by the President/Chairperson prior to speaking.
3. When recognized by the President/Chairperson, each audience member should identify themselves and limit speaking to no more than three (3) minutes, unless additional time is granted by the President/Chairperson.
4. Questions are to be directed to the entire Board/Committee.
5. Park Board members may, by addressing the President/Chairperson, interrupt a presenter to obtain clarification and/or further information.
6. A Board/Committee meeting is not a forum for complaints against individual employees. Such matters are handled by directly contacting the Executive Director. Complaints against the Executive Director should be handled by directly contacting the President of the Board of Park Commissioners.
7. During presentation and discussion of agenda items, the President/Chairperson will not recognize speakers in the audience unless the Board/Committee desires additional information from an audience member.
8. When addressing the Board/Committee, all persons permitted to speak shall confine their remarks to the matter at hand and avoid personal remarks, the impugning of motives, and merely contentious statements. If any person indulges in such remarks or otherwise engages in conduct injurious to the civil discourse of the Board/Committee and the meeting, the President/Chairperson may immediately terminate the opportunity to speak. This decision is at the discretion of the President/Chairperson or upon the affirmative vote of two-thirds (2/3) of the park board commissioners present.
9. Any person, except a member of the Board, who engages in disorderly conduct during a meeting, may be ejected from the meeting upon motion passed by a majority of the Board present.



## **WILMETTE PARK DISTRICT**

### **Parks and Recreation Committee Meeting Minutes**

*Monday, March 15, 2021*  
*Virtual Meeting via "Zoom"*

#### **Present**

---

Commissioners/Committee: Chair, Mike Murdock, Cecilia Clarke, Amy Wolfe  
Staff: Emily Guynn, Kristi Solberg

Staff: Director Steve Wilson, Sheila Foy, Carol Heafey, Jason Stanislaw

Visitors: Jeanine Friedman, Mary Claire Kavoosis, Blythe Silva, Elanor Lipinski, S. Fink, Walter Keats, Neil Ferarri, Maren, Nancy Freeman, Elanor Guzzio, Mike Doyle, Mark Dunn, Kyle O., Janice Soukenik, Elizabeth O'Toole, Katherine Gossard, Amy Stewart Smith, Roloff, Andrew Levy, Rich DeLeo, Isaac Gaetz, William Sholten, K. Lim, Eileen Paull, Ben, Alli Frazier, Mercedes Mann, Simone, Mary Lawlor, Buddy Bush, Elizabeth, Sharon Bussell, Pamela Lurie, Jeff Kinker, Richard Pinner, Morgan Ruez, Patrick Duffy, Adam Goldman, Rick Prohov, N. Berman, Kathleen Sullivan, Sally Ann Garner, Sara Squire-Doyle, Brij Shah, Mark Schumacher, Faye Jacobs, Mary Shea, Katja Steen, Charmaine Goldman, Joe McGann, Dave Lipinski

#### **Absent**

---

None

#### **I. Meeting Called to Order**

---

Meeting called to order at 6:30 p.m. Commissioner Murdock noted that he was going to rearrange the agenda to move Managers' Reports up to earlier in the meeting. He also said he would ask for public comment after each agenda item is first discussed by staff and the Committee. This would allow the public to reflect on the new information and the context of the initial discussion.

#### **II. Approval of Minutes**

---

##### **A. February 8, 2021 Parks & Recreation Committee Meeting**

Commissioner Clarke moved and Commissioner Wolfe seconded a motion to approve the minutes of the February 8, 2021 Parks & Recreation Committee meeting

By a roll call vote, voting Yes, Commissioners: Clarke, Wolfe, and Murdock. Voting *No*, none. *Absent*, none; **motion carried**.

#### **III. Communications and Correspondence**

---

Commissioner Murdock acknowledged a tremendous amount of communication and correspondence in the packet, most of which was surrounding the option of a dog park at Mallinckrodt. He explained that all locations in the District were considered as possible locations, and after a couple discussions, the two locations left under consideration were Mallickrodt and Howard Parks. At no time has staff or board made any recommendations in regards to either location. A number of questions were asked at the last meeting and more information will be discussed in

tonight's meeting. He noted some emails were also about pool operations and pickle ball.

#### **IV. Managers' Reports**

---

##### Carol Heafey Reported

- Currently 32 enrolled on a daily basis for the upcoming Spring Break Camp
- Student Directed Plays begin this weekend with up to 50 in the auditorium
  - 6 plays total with about 10 students in each play
- Spring registration is off to a strong start with over 1,400 enrollments in her division which is actually higher than the same time in 2019
- Pop-Up classes have been a new offering during COVID restrictions and are well received with more to come through the Spring Session
- Camp registration options are in the process of being finalized with a return to our traditional camps after the 2020 season

##### Jason Stanislaw Reported

- The Tennis Winter Session is wrapping up and Spring Session is looking to be about the same in enrollment
- Camps are getting prepared with slightly less ratios than we have done historically and Pirate Tennis Camp is coming back in 2021
- Paddle is winding up the winter league and in-house spring leagues are getting ready to get going soon
- The Spring Paddle Lesson session is higher than in 2020 by about 100%
- Ice Learn To Skate Spring session is on par with Winter which is not the historical norm as Spring is typically lower than Winter
- Wilmette Hockey Association is wrapping up and will take the summer off
- Ice Show to take place in May with limited attendance
- Pools plan to operate similar to 2020 with more public swim availability based on knowing the guidelines more clearly and public feedback

##### Emily Guynn Reported

- Gymnastics hosted a meet with limited numbers to stay COVID compliant
- 88 of 96 gymnastics classes are full given the limited per class capacity
- Open gym is returning as well at gymnastics
- Center Fitness Club is communicating with members looking to bring people back to the facility
- Fitness visits are on the increase but not back to normal
- Mallinckrodt is continuing virtual fitness classes
- Survey to about 9,000 email addresses gauging interest in coming back to Mallinckrodt and will be working on a reopening plan in the next month or two

## **V. Unfinished Business**

---

### **A. Community Playfields Fitness Path**

Superintendent Solberg provided an update from the February meeting. She said that a new option was added in purple. The path goes around the cottonwood trees in the southeast portion of the park. She highlighted a new yellow configuration that was one mile exactly. She then walked through the prior configurations and all the related costs.

After public comment, Commissioner Murdock asked the committee to discuss the options. Commissioner Clarke stated that she appreciates all the options staff have presented. She said she is not in favor of boardwalk in any option, prefers a one mile option if we can avoid affecting the field layout and usage. She said that if that cannot be done well, she would be in favor of a half-mile option. She concluded by saying she does not think lighting should be on the fitness path, and only on the main center walkway. Commissioner Wolfe said she is in strong favor of a one-mile path and does not like the boardwalk. She then asked if we could move the blue path a little north towards the yellow path in the southwest location. Superintendent Solberg said that with the irrigation lines and sewer lines in that area, we have been trying to avoid putting the path over them. She then asked if the blue line could be moved up to the yellow line in that area of the park. Superintendent Solberg asked if she is looking for a blue and yellow combination option, and Commissioner Wolfe agreed. Commissioner Murdock said that we are trying to make a recommendation tonight so before we create another option, he asked Commissioner Wolfe to explain what she is trying to accomplish. Commissioner Wolfe said that she is trying to get a one-mile path without a boardwalk and feels that the combination concept could achieve that. Commissioner Wolfe stated she is not in favor of lighting on the fitness path but in favor of lighting on the center path. Commissioner Murdock said he feels the yellow path option is the furthest south we can go before we risk damaging the trees, and Superintendent Solberg agreed. He then asked about the number of fields impacted by the yellow path option. Director Wilson said that the current option overlays one field in the current field configuration but comes close to other fields on about six fields which is concerning from a collision or fall perspective. Commissioner Murdock said he is in agreement with the committee about not wanting a boardwalk on the path. He said he also agrees when it comes to lighting. He said that he strongly supports a one mile path option, but given the impact it could have on the fields is troubling to him and therefore feels a half mile path should be pursued initially, and if in time it can be expanded successfully, then a future board can do so.

Commissioner Clarke made a recommendation to pursue a half mile or three quarter mile loop. Commissioner Murdock said he agreed with Commissioner Clarke and noted that Commissioner Wolfe does not agree and prefers a mile loop. He said that the recommendation would go to the full board for their consideration. Commissioner Wolfe made the recommendation to include low-level lighting on the center path only and both Commissioners Clarke and Murdock concurred.

**B. Community Playfields Bathrooms**

Superintendent Solberg provided an update from the February meeting. She specifically highlighted the new option in Orange that was added based on a Commissioner's suggestion. She then walked through all the prior options and all the related costs. She then explained what can, and cannot be, buried underground of the irrigation pump system along with the costs to do so.

Commissioner Murdock mentioned an email with a ten-point request had been received that afternoon from Rick Prohov. He went onto say that he, nor the other Committee members, have had time to review it and therefore it will not be something discussed during this meeting. He then opened the meeting up to public comment regarding the fitness path and bathrooms in Community Playfield (see below).

After public comment, Commissioner Murdock asked for an update on the bathrooms at Wilmette Junior High. Director Wilson said that the Superintendent of District 39 spoke with her board and gave the Park District the go ahead to draft an intergovernmental agreement. Commissioner Wolfe asked for clarity on where the irrigation equipment is located in the park and Superintendent Solberg showed it by pointing to it on the bathroom exhibit and indicated it being north of the path and west of Option C, close to where Options H and F are located. Commissioner Wolfe asked if the equipment could be moved into a bathroom building and Superintendent Solberg said yes. Commissioner Murdock asked if anyone wants to defer the bathroom discussion until an agreement is worked out with the schools. Commissioner Clarke stated that her concerns about the restrictions the school will place on the availability of the washrooms makes her want to pursue bathrooms in the park. She went onto say that every community around Wilmette has washrooms and feels that this is something we should pursue regardless. Commissioner Wolfe said she agreed with Commissioner Clarke's concerns about the agreement with the schools and the need for freestanding washrooms in the park. Commissioner Murdock said he does feel that portable toilets is not an sufficient option, but he is in favor of seeing how the D39 washrooms can serve the park before pursuing free standing washrooms.

Commissioner Wolfe recommended location C for the board to consider.

Commissioner Clarke agreed with the recommendation and Commissioner Murdock did not. Commissioner Murdock said the recommendation would go to the board for their consideration.

**C. Dog Park Locations**

Superintendent Solberg reported on the initial option of a small dog park in the northeast corner of Howard Park, and a new idea that runs along the east side of the park that creates a larger dog park that would be broken into a large dog and a small dog area. This idea of two different dog parks for the various sized dogs also allows for pedestrian and bikes to pass through the middle of the east boarder of the park. This concept would require removing the existing parking lot and seek other options for provide parking. Staff then showed Mallinckrodt Park's concept from the prior meeting, along with two new concepts, one in the southeast corner of the park and one still in the middle but with the footprint reduced by about half. She then updated the Committee that the permit process in Glenview for the West Park Dog Park is still moving slowly due to other cases on their agenda.

Commissioner Wolfe asked whether the angled parking on 17<sup>th</sup> Street would provide the same amount of parking as the existing parking lot and Director Wilson said that the Village felt they could but that was only working from a satellite image, and more details need to be worked through. Commissioner Clarke asked how often the parking lot is used and staff responded that when there are activities like softball it is well used with parking onto the streets.

Commissioner Wolfe said that her preference is for Howard Park as that is the park the initial request from the public was about. Commissioner Clarke agreed with Commissioner Wolfe. Commissioner Murdock said he also feels that Mallinckrodt is not the preferred location and feels that the Committee should continue to look at Howard Park further.

Public comment (see below) was taken in regard to dog parks.

After public comment, Commissioner Murdock addressed the question about the road on the north side of the building and clarified that it is not abandoned and used by District staff to access the building at Howard Park. He then clarified that the Howard Park concept would include a small dog area.

Commissioner Clarke said that it is apparent that there is no ideal location for a new dog park, but with that being said, she felt that Howard Park is the best option and moved to recommend Howard Park as the location for a new dog park. Commissioner Wolfe seconded the motion and said that she would like to know more details around drainage, parking, fence heights, and amenities. Commissioner Murdock concurred with the motion.

## **VI. Public Comment/Recognition of Visitors**

---

Director Wilson facilitated public comment. The Attendance Record will become part of the permanent record.

Eleanor Lipinski – Spoke about dog parks. Said she agreed with the discussion thus far. She asked about limited time to allow for dogs off leash to use a bigger area. She said that is what is happening currently.

Walter Keats – Spoke about dog parks. Said he still has concerns about the lack of evidence for the need for more dog parks as he has submitted prior via email. He urged more data collection prior to making a decision.

Morgan Ruez – Spoke about dog parks. Thanked the Committee for their comments thus far and reiterated her concerns about Mallinckrodt as a possible location for a dog park as she had stated prior in an email.

Charmaine Goldman – Spoke about dog parks. Voiced a desire to have a small dog park area, or timeframe, as the owner of a small dog who has been attacked by larger dogs in the past.

Amy Stewart-Smith – Spoke about dog parks. She reiterated her email in opposition to Mallinckrodt as a dog park location.

Jeanine Freidman – Spoke about dog parks. Asked how the to be elected board members will affect the decisions being made now. Staff responded that historically new boards do not undo the work done by prior boards, but they have the right to make new decisions that affect prior board decisions.

Joe McGann – Spoke about dog parks. He reiterated his opposition to Mallinckrodt as a dog park location.

Dave Lipinski – Spoke about dog parks. Said he is a heavy user of Howard Park and said that the area identified for the dog park has drainage issues and suggested the road on the north side of the park should be used instead.

Neil Ferarri – Spoke about Community Playfields. He said he was heartened by the additional options for the path and that he hopes whatever is chosen does not use any boardwalk. He stated a preference for the purple configuration. He also said that there was prior discussion about lighting, and that in his opinion that should only be installed on the center path. He urged the process to pause and collect more data on bathroom use at the junior high before making a decision. After the data collection process, if a bathroom were still deemed necessary, he would recommend option B.

Walter Keats - Spoke about Community Playfields. He said that he likes the yellow option that is one mile. He stated that for bathrooms, there is still no discussion about the junior high washrooms and he cannot believe that this has not happened yet. He said that we should also collect data on the porta potties used this year.



Rick Prohov - Spoke about Community Playfields. He said he thinks the path is a great idea and said he agreed that low lighting on a timer basis along the center path is something to consider. He then said he was wondering about the distance of the path from any particular home. About bathrooms, he said that Option B is best in his opinion. He said that the new orange option is even closer to a home and not a good idea.

Mike Doyle - Spoke about Community Playfields. He expressed his excitement for a fitness path and said he likes the new options that do not require boardwalk. He said he feels that whichever configuration ends up being the final solution, he feels a mile length is what should be the result. He expressed concerns about how tight the loop is around the trees in the purple option and urged some further consideration on specific designs if it is pursued further.

Richard Pinner - Spoke about Community Playfields. He said he is disappointed by the process and the decision to proceed with recommendations tonight. He feels that a comprehensive plan should be considered before making decisions on specific amenities. He said that Option B is the best option for the bathroom location.

Faye Jacobs - Spoke about Community Playfields. She stated she echoed every word of Mr. Pinner. She said she likes how the discussion around the fitness path has progressed and feels it should be one mile if pursued. She feels that upgraded portable toilets is the best option in the upcoming year so more data can be collected. She then urged for a comprehensive plan to be pursued before deciding on bathrooms.

Brij Shah - Spoke about Community Playfields. He spoke about the process to date and how he hopes that in the future it will be more transparent. He stated that the board should consider the residents when determining a bathroom, and said that Option B is the clear best location.

Isaac Gaetz – Spoke on disc golf. Stated he is in favor of disc golf in Wilmette. He originally proposed Gillson Park but would be happy to see it facilitated anywhere in Wilmette and is happy to help any way he can to make it happen.

Joe McGann – Spoke about disc golf. Stated he is in favor of it as it is a very inclusive sport and would be a nice addition to the park system.

Walter Keats – Spoke about garden plots. He said the survey indicated concerns about theft of their produce and suggested a key system be used with the garden plots to increase security.

## **VII. New Business**

---

### **A. Garden Plots**

Staff gave a summary of the garden plot survey and the current rental rate. Currently Centennial has 69 total plots with 72 people on the waitlist. 65 contracts have been returned thus far. At West Park, there are 85 plots, with 28 people on the waitlist. At this moment, 80 contracts have been renewed. Specific to the survey, staff reported the type of questions, and the related responses.

Commissioner Murdock thanked the staff and mentioned that this will be helpful information as the District plans for garden plots into the future in hopes of eliminating the waitlist in time.

**B. Community Needs Survey**

Commissioner Murdock reiterated his desire to have a survey to help prioritize planning of the District moving forward and said that while there is no action during this meeting, he is hoping that the new board will engage such a process after the election.

**C. Disc Golf**

Commissioner Murdock mentioned how the initial request for disc golf was at Gillson Park and ultimately, President Anderson moved the discussion to the Parks and Recreation Committee so all parks could be considered, similar to how the paddle tennis and dog park discussions took place. He said that this process will take place in future meetings.

**D. Pickleball Courts**

Commissioner Murdock stated that in a prior budget, pickleball courts were budgeted but put on hold in 2020 due to the pandemic. He asked for staff to talk about the topic starting with what currently exists. Director Wilson stated that tennis courts are striped at Hibbard Park and Maple Park making a total of three courts with pickleball striping and that at the next committee meeting, staff will bring forward options on locations and a concept budget for how a program could work.

**E. Solar Panels**

Commissioner Murdock gave a brief history of how once upon a time solar panels were contemplated on the roof at the community center, but again was put on hold. He asked staff to discuss whether this is still a possibility. Director Wilson stated that he feels that the roofing work at the recreation center would not prevent solar panels from being installed in the future, and have worked out how it can be done to not void the roof warranty. Commissioner Murdock said that was good news and looked forward to talking about it in the future.

**F. Hibbard Park Amenities**

Director Wilson reported that the Village is currently installing the underground tank and that when their work is complete, the plan that was approved by the full board months ago is how the park will be restored and that no new amenities are contemplated at this time.

**G. Thornwood Park Amenities**

Director Wilson reported that on March 24<sup>th</sup> the Village would be holding a meeting regarding the project at Thornwood that the Park District will participate in to help answer any questions about the park after the Village's project concludes. He then reminded the Committee that the agreement with the Village contemplates both bathrooms and an irrigation system. Commissioner Murdock reiterated that the Village drove the schedule around Community Playfields and while it did not go as well as anyone would like, the time before Thornwood

commences, we will be able to be more proactive on gathering public input regarding amenities.

#### **VIII. Next Meeting**

---

The next meeting is tentatively scheduled for April 12, 2021.

#### **IX. Adjournment**

---

There being no further business to discuss, Commissioner Wolfe moved and Commissioner Clarke seconded a motion to adjourn the Parks and Recreation Committee meeting at 8:50 p.m.

By a roll call vote, voting Yes, Commissioners: Clarke, Wolfe, and Murdock. Voting No, none. *Absent*, none; **motion carried.**

Minutes Approved on: TBD

**From:** [markschumacher@gmail.com](mailto:markschumacher@gmail.com)  
**To:** [Steve Wilson](#)  
**Subject:** [external] Parks and Rec Committee - Indoor Pool Feasibility Study Request  
**Date:** Friday, April 16, 2021 12:03:40 PM

---

Hi Steve, Wondering if the letter below can be included in the packet for the next Park and Recreation Committee Meeting.

Dear Members of the Wilmette Park District Parks and Recreation Committee:

I would like to ask the park district to study the feasibility of building an indoor pool. While I was running to be a Wilmette Park Board Commissioner, I had many conversations with residents throughout the community and I heard many excellent ideas. One of the ideas that kept coming up was the idea of an indoor pool.

I was very interested to learn that when Centennial was last rebuilt, the community asked for an indoor pool but the park board overruled the advisory group.

As a swimmer myself and a father of children who swim competitively, I know the many fitness benefits of a year-round swimming regimen. Unfortunately, the only way a Wilmette resident can swim year-round today in Wilmette is by joining a private club.

I know how popular the Glenview indoor pool is and our family has gone to Glenview to use that facility numerous times over the years. I believe that many residents would financially support an indoor pool so that it does not need to cost the taxpayers anything.

I hope you will consider this request and authorize a feasibility study. Thank you.

Sincerely,

Mark Schumacher

**From:** [Kristi Solberg](#)  
**To:** [Steve Wilson](#)  
**Subject:** FW: [external] Proposed dog park  
**Date:** Wednesday, April 14, 2021 2:33:59 PM

---

**Kristi Solberg, CPRP**  
**Superintendent of Parks and Planning**  
**Wilmette Park District**  
**P:847-256-9639**



**From:** Peg Kritzler <pkritzler@gmail.com>  
**Sent:** Wednesday, April 14, 2021 2:30 PM  
**To:** Kristi Solberg <ksolberg@wilpark.org>  
**Subject:** [external] Proposed dog park

Dear Ms. Solberg,

I am including a letter about my opposition to the proposed dog park. I ask that you share it with the board.

t\Thank you very much,

Peg Kritzler

Dear Park Board Members,

I am writing to express my strong opposition to the proposed dog park in Howard Park. My property along with my son's property abut Howard Park, and I am seriously concerned about the impact this proposal would have on both my family and my property.

I have heard proponents of the dog park suggest that my concerns are merely NIMBY (not in my back yard). In this case, that is literally true. With surprising frequency, dogs find their way into my yard either through a gate left open by my grandchildren or by slipping under the park district fence. I have had owners chase their dogs through my yard; I have had dogs in my yard with no owner in sight. I even found a dog swimming in my in-ground bird bath. Just yesterday, a dog appeared in my yard without an owner visible. After a bit, the owner appeared and completely disregarded my request that he put his dog on a leash.

People walk their dogs in Howard Park every day, throughout the entire day. Many do so disregarding the current leash laws. The problem will only be exacerbated if Howard Park becomes

an official dog park. There is no reason to believe that dog owners will obey the leash laws associated with a dog park when they consistently ignore the existing Village leash laws.

I have also heard proponents suggest using the “empty” section of Howard Park for a dog park. There are no empty sections. Howard is used for youth soccer, softball, lacrosse, and football. When there are softball tournaments, the park and the parking lot are packed. Adults use the park for the softball league games. Parents use the park to work on various sports skills with their children; families play flag football games, and classes hold picnics. Runners, walkers, kite flyers, and snow sledders use the park all year long. To add more dogs to this mix invites congestion and conflict.

I strongly urge you to reject this proposal for the sake of all of us who use Howard Park for recreation.

As a former dog owner, I understand how much people care about their dogs. However, a pristine span of beach has already been dedicated as a dog park, so dogs and their owners have a place to play.

Let Howard Park remain a place for children and adults to play.

Sincerely,

Peg Kritzler  
1733 Lake Avenue  
Wilmette

**From:** [Kristi Solberg](#)  
**To:** [Steve Wilson](#)  
**Subject:** FW: [external] Upcoming Parks and Recreation Committee Meeting  
**Date:** Wednesday, April 14, 2021 11:37:05 AM  
**Attachments:** [Gwynn Feb Email.pdf](#)

---

**Kristi Solberg, CPRP**  
**Superintendent of Parks and Planning**  
**Wilmette Park District**  
**P:847-256-9639**



**From:** Barbara Queen <bqueen.vln@gmail.com>  
**Sent:** Wednesday, April 14, 2021 10:53 AM  
**To:** Kristi Solberg <ksolberg@wilpark.org>  
**Cc:** Emily Gwynn <egwynn@wilpark.org>; Blair Milton <blairmilton@gmail.com>  
**Subject:** [external] Upcoming Parks and Recreation Committee Meeting

Dear Superintendent Solberg:

Thank you for the notice slipped in our mailbox yesterday regarding the next meeting of the Parks and Recreation Committee scheduled 4/19/21 6:30pm.

Your notice indicated that the committee will be discussing a dog park at Howard Park. The residents only recently learned that this proposal has been under consideration for several months. We appreciate the opportunity to express our opinions during the public comment portion of the Zoom meeting next Monday.

In reviewing the minutes from the committee meeting 2/8/21, we see that residents near Mallinckrodt Park expressed their concerns in multiple letters to the Board.

It is not sitting well with residents in this neighborhood that the WPD solicited feedback from the Mallinckrodt community (see attached PDF from page 136 of the minutes from the 2/8/21 meeting), but not the Howard Park community - more than two months later.

We know the WPD has now received many letters/emails opposing a dog park in Howard Park and we would like to ensure that all such communications be represented in the minutes for the 4/19/21 committee meeting.

Sincerely,  
Barbara Queen & Blair Milton  
828 17th Street  
Wilmette

**From:** [Julia Goebel](#)  
**To:** [Steve Wilson](#); [Emily Guynn](#); [Kristi Solberg](#)  
**Cc:** [Mike Murdock](#)  
**Subject:** Fwd: [external] Tennis backboard  
**Date:** Tuesday, April 13, 2021 3:19:55 PM

---

Correspondence for parks and rec committee packet.

---

Julia Goebel

Commissioner  
Wilmette Park District  
[jgoebel@wilpark.org](mailto:jgoebel@wilpark.org)

Begin forwarded message:

**From:** J Zamansky <[jzamansky@gmail.com](mailto:jzamansky@gmail.com)>  
**Date:** April 13, 2021 at 3:16:09 PM EDT  
**To:** Julia Goebel <[jgoebel@wilpark.org](mailto:jgoebel@wilpark.org)>  
**Subject:** [external] Tennis backboard

HI

Would it be possible to install a tennis backboard for practice somewhere in Wilmette. It is not an expensive proposition.

Thanks

Jeff Zamansky

Sent from my iPad



**From:** [Anna Lynn Christoff](#)  
**To:** [Steve Wilson](#)  
**Subject:** [external] Dog Park In Wilmette  
**Date:** Monday, April 12, 2021 8:47:49 PM

---

We have a dog and would be interested in some portion of the current existing green spaces in Wilmette to be used as a dog park. While we have a dog beach pass, that space is not always very secure outside of the beach season, so anyone can and does go to that beach with or without a dog pass. Also, depending on water height and waves, the beach has become quite small at times if there are a number of large dogs at the beach.

Many of my neighbors pay to take their dogs to dog parks outside of Wilmette. I would be in favor of an annual fee for a secure place to run our dog and this would keep revenue in Wilmette.

Thanks.

**From:** [Julia Goebel](#)  
**To:** [Steve Wilson](#)  
**Cc:** [Mike Murdock](#)  
**Subject:** Fwd: [external] Howard Park Dog Park  
**Date:** Monday, April 12, 2021 2:51:47 PM

---

Please include in correspondence for Parks & Rec Committee meeting.

---

Julia Goebel

Commissioner  
Wilmette Park District  
[jgoebel@wilpark.org](mailto:jgoebel@wilpark.org)

Begin forwarded message:

**From:** Kelly Higgins <[kelly\\_gummerson@yahoo.com](mailto:kelly_gummerson@yahoo.com)>  
**Date:** April 12, 2021 at 1:30:37 PM CDT  
**To:** Julia Goebel <[jgoebel@wilpark.org](mailto:jgoebel@wilpark.org)>  
**Subject:** [external] Howard Park Dog Park  
**Reply-To:** Kelly Higgins <[kelly\\_gummerson@yahoo.com](mailto:kelly_gummerson@yahoo.com)>

Hi Julia,

I am writing to you in reference to the proposed dog park at Howard Park.

Truth be told, I am not sure of the exact current proposal for the dog park at Howard Park, but I just thought I would voice my concerns about one of the proposals that I have seen, in which 1.5 acres of the park along 17th would be fenced in and used for the dog park.

Howard Park has become a haven for my kids during the events of this past year. It has given them a place to play and meet with their friends when other activities have been canceled. While I am a lover of dogs, and a supporter of dog parks I feel that the scope and placement of such a dog park would really change the landscape of Howard and as such I do not support such a proposal. I ask you to consider the impact to the immediate area when you cast your vote.

I appreciate you taking the time - I know this has been a big point of discussion and I am sure has consumed a lot of time!

Thanks again,  
Kelly Higgins  
1635 Lake Ave.

**From:** [Mike Murdock](#)  
**To:** [Steve Wilson](#)  
**Subject:** Fwd: [external] Fitness path  
**Date:** Monday, April 12, 2021 12:35:32 PM

---

FYI

Sent from my iPhone

Begin forwarded message:

**From:** Jeremy Verstraete <javerstr8@gmail.com>  
**Date:** April 12, 2021 at 9:42:38 AM CDT  
**To:** Mike Murdock <mmurdock@wilpark.org>  
**Subject:** Re: [external] Fitness path

Mike,

Good morning. Thank you for getting back to me. I appreciate the reply and extensive response. I will review all the information you sent and see if there's a needle in that haystack for a 1 mile option. Please let me know if you need additional community support for this, I am sure I can rally the local running community (of all ages) to support this initiative. My wife is one of the Girls on the Run coaches for elementary girls.

Cheers,  
Jeremy Verstraete

[javerstr8@gmail.com](mailto:javerstr8@gmail.com) | +1.314.570.2590

**From:** [Kristi Solberg](#)  
**To:** [Steve Wilson](#)  
**Subject:** Fwd: [external] Howard Park  
**Date:** Sunday, April 11, 2021 7:57:36 PM

---

Kristi Solberg  
Superintendent of Parks and Planning

Begin forwarded message:

**From:** Thomas Gillespie <tgill829@icloud.com>  
**Date:** April 11, 2021 at 7:44:51 PM CDT  
**To:** Kristi Solberg <ksolberg@wilpark.org>  
**Subject:** [external] Howard Park

Ms Solberg

My name is Tom Gillespie and I live on the 800 block of 16th St. I have been a resident of Wilmette for the past 36 years.

Within the past two weeks I've come to understand the park board is considering a dog park in Howard Park.

Howard Park is a beautiful open space in the middle of our community and it serves as a great sports park, with park district sponsored kids softball, football, lacrosse and adult night league softball, as well as a place for kids and adults alike to wander, sit and play.

I am and have been a dog owner, (large dog), for all the years I've lived in Wilmette. I walk my dog past the park on a regular basis.

I am opposed to upending the park and neighborhood to serve the wants of a minority of dog owners and even a smaller minority of Wilmette residents. There must be better options to spending park district money to accommodate dogs' needs.

I hope you and the park board can find these better options.

Thank you for your considerations.

Tom Gillespie  
Sent from my iPad

**From:** [Faith Bugel](#)  
**To:** [Mike Murdock](#); [Steve Wilson](#)  
**Subject:** [external] Plans for a Track  
**Date:** Sunday, April 11, 2021 7:33:59 PM

---

Dear Director Wilson and Commissioner Murdock:

As a family of runners who make frequent use of local tracks and paths, we are writing to urge the Park District to plan and install a one-mile track. We urge you to reconsider the proposed 1/2 mile or 3/4 mile fitness path and adopt a plan for a 1-mile path. One mile is the gold standard for runners and walkers and will create opportunities for community building events for years to come. Please do not move forward with the proposed recommendation of a half to 3/4 mile track and instead come up with a plan that addresses more of the community's needs and delivers more benefits.

Thank you for your consideration.

Sincerely,  
Faith Bugel  
Dave Rickard

--

Faith E. Bugel  
Attorney at Law  
1004 Mohawk Rd.  
Wilmette, IL 60091  
(312) 282-9119

**From:** [Lauren Sheehan](#)  
**To:** [Mike Murdock](#); [Steve Wilson](#); [Alli Frazier](#)  
**Subject:** [external] New Fitness Path- MAKE IT 1 MILE!  
**Date:** Sunday, April 11, 2021 5:44:31 PM

---

Hi Mike, Steve, Alli,

I recently found out about the plan to build out a fitness path at the Community Playfields, which is super exciting. As an avid runner, I love that the Park District is working on this, and know that I, along with other community runners, will truly be grateful and enjoy this new path regularly. So first off, thanks for taking this on!

One thing did stand out like a sore thumb to me though...it not being a full 1.0 mile, and instead just a 3/4mi route. I cannot emphasize enough how "off" this sounds to a runner. It's like saying you are going to build out a golf course that only has 8 holes. This may not seem like a big deal to others, especially those that don't run regularly, but it IS. It's almost silly, especially given the ability to make it a full mile does indeed exist.

Making the path a full, even 1.0 mile will make heading there attractive. Less than a mile, and honestly, I worry runners won't find it as beneficial. Runners run and pace in increments and splits, and without getting too technical, there are common segments. 1 mile works fabulously. 3/4 mile doesn't work at all. It's just not how runners run or plan their routes or track mileage.

My other concern, and my strong suggestion, is that when initiatives like this are being planned, PLEASE do some user research and talk to people in the community that truly represent who the initiative is meant to serve. This time, it's our running community (which is large). Is this perhaps an extra step? Sure, but it's an easy one and will help Wimette and its leaders be set up for success in really planning and building out wonderful and truly thoughtful amenities for our community. By asking runners questions, and truly listening to their answers and thoughts on what makes a great running and fitness path, you have the chance to gain some wonderful insights that will help make this project a true and complete success. Failure to do so will almost always result in projects that just miss the mark, or fail to provide to their maximum potential.

I know a lot of thought and planning has gone into this already (thank you!), and I imagine folks just want to get it done and "check the box". But I cannot plead enough to please make it a full 1.0 mile. Don't overlook this incredibly important detail and leave us runners scratching our heads and disappointed.

Thank you so much-  
Lauren Sheehan

**From:** [Erika Wilson](#)  
**To:** [Steve Wilson](#); [Mike Murdock](#)  
**Subject:** [external] Fitness Path  
**Date:** Saturday, April 10, 2021 1:33:28 PM

---

Director Wilson and Commissioner Murdock:

As an avid runner, I urge you to reconsider the proposed 3/4 mile fitness path plan and create an option for a 1m path. One mile is the standard distance for every runner and will create opportunities for community building events for years to come. Please do not move forward with the proposed recommendation and provide a solution that addresses the community's needs.

Thank you for your consideration.

Sincerely,  
Erika Burkemper

**From:** [Laura \(Yee\) Sardegna](#)  
**To:** [Mike Murdock](#); [Steve Wilson](#)  
**Subject:** [external] Fitness Path Proposal  
**Date:** Saturday, April 10, 2021 12:51:28 PM

---

Director Wilson and Commissioner Murdock,

As a prior track runner and runner now, I urge you to reconsider the proposed 1/2 mile or 3/4 mile fitness path plans and create an option for a 1 mile path.

One mile is the standard gold distance for every runner or walker and will create opportunities for community building events for years to come.

My daughter is doing track this year at Highcrest and will plan on doing track for years to come. I also have another daughter and son who might want to do track as well so this is important to our family.

Please do not move forward with the proposed recommendation and provide a solution that addresses the community's needs and the potential for health benefits for all.

Thank you for your consideration.

Laura Sardegna



**From:** [Amy mattle](#)  
**To:** [Steve Wilson](#)  
**Subject:** [external] Wilmette Dog Park  
**Date:** Friday, April 9, 2021 7:08:08 PM

---

Hello

We are in support of a Dog Park in Wilmette. This is desperately needed! The only other dog parks are the beach (messy) and near West Park which is not fenced which makes me nervous.

Thank you!  
Amy & Bill Mattle

**From:** [Debra Van Winkle](#)  
**To:** [Steve Wilson](#)  
**Subject:** [external] Dog Park for Wilmette  
**Date:** Friday, April 9, 2021 9:58:33 AM

---

I fully support the proposed creation of a dog park as park of Howard Park. There are a lot of dogs in Wilmette and Gilson Beach is not always the right place for them to romp.

Thank you,  
Debra Van Winkle  
125 16th St. ,Wilmette

Sent from my iPad

**From:** [Julia Goebel](#)  
**To:** [Steve Wilson](#)  
**Subject:** Fwd: [external] Howard Dog Park  
**Date:** Thursday, April 8, 2021 12:20:15 PM

---

Steve,

Please include in board meeting packet correspondence. Thanks.

---

Julia Goebel

Commissioner  
Wilmette Park District  
[jgoebel@wilpark.org](mailto:jgoebel@wilpark.org)

Begin forwarded message:

**From:** Erin McShane Smith <[emcshanesmith@gmail.com](mailto:emcshanesmith@gmail.com)>  
**Date:** April 7, 2021 at 6:56:25 PM CDT  
**To:** Julia Goebel <[jgoebel@wilpark.org](mailto:jgoebel@wilpark.org)>  
**Subject:** [external] Howard Dog Park

Hi Julia,

I'm writing to express my concerns about a dog park at Howard Park. We are a family that utilizes the park quite often with having 4 kids and living just down the street on Washington. During COVID times, our 5th grader and 3rd grader have used the park on almost a daily basis with their friends. They enjoyed the large open spaces, creating games, playing "house" in the trees, ghost in the graveyard, etc. and most specifically the freedom it allowed for them to safely access a park like that on their own with it being so quiet and close to home.

The expansive grassy area is an anomaly in our area. The possibility of free play and relaxation in a beautiful space just steps from our house is a gift to our mental and physical health. My husband and I use the space regularly for leashed walks with our dogs and family picnics.

Adding a dog park would make a quiet, neighborhood space become a destination for dog owners that live all over wilmette and beyond. It would increase traffic to the area, which could be a safety hazard to the children in the area. It would also increase noise level to the homes that so closely surround the area of Howard Park.

As a dogs owner, we frequently use the current dog parks provided by our village at West Park and Gillson. We feel these parks provide adequate space for our dog to roam freely and they are never overcrowded. They are in non-residential areas and already offer ample parking.

Please keep Howard Park the gem that is to our community by voting against a dog park.

Thank you for your time and consideration.

Erin and Ned Smith

**From:** [BARRY SPECTOR](#)  
**To:** [Steve Wilson](#)  
**Subject:** [external] Re: Howard Park  
**Date:** Thursday, April 8, 2021 11:13:14 AM

---

Mr. Wilson,

Perhaps you didn't see the email that I sent on April 3rd, so I am resending it.

Please let me know if you have any questions.

Thank you,

Barry Spector  
847-494-5901

On Apr 3, 2021, at 5:48 PM, BARRY SPECTOR <[specto@aol.com](mailto:specto@aol.com)> wrote:

Dear Mr. Wilson,

First of all, thank you for all that you do for Wilmette. We love using all of the parks in the Village. Today, we are writing to you regarding our concerns about the proposed dog park in Howard Park.

Our family has lived in Wilmette for over 36 years. We live on 15<sup>th</sup> Street and everyone in our family has used Howard Park for numerous Park District sponsored team activities throughout the years. We were disappointed and completely surprised to learn that a dog park is under consideration in the swampy eastern section of Howard Park. Even though there have always been dogs in our family, we hope that the Board rejects this extremely shortsighted and ill-advised idea.

We have always brought our dog to the dog park at Gilson Beach. Everyone we know enjoys bringing their dogs to that location. It is perfect. There is ample parking, it is easy to maintain and patrol, it does not disturb neighbors in any way, it hardly needs any maintenance and most importantly it doesn't flood. A dog park in Howard Park does not offer any of these attributes. Actually, it would be the exact opposite. We find it very hard to believe that if anyone in Village government sincerely believes that another dog park is needed in Wilmette (of which we have our serious doubts), there must be a much more suitable location in the Village.

This being the case, and our objections noted for the record, we are curious about the timeline for the Board moving forward with consideration of this issue. We believe that the next Park District meeting is scheduled for April 19th.

There are several questions for you that our friends, neighbors, other family members and we would appreciate your answers to:

What exactly is on the agenda in regard to the proposed dog park at the April 19<sup>th</sup> meeting?

When will there be an opportunity for public comment?

Does the Park District Board have the final say as to whether or not the dog park is actually opened in Howard Park or does it have to go thru other Village committees or governing bodies?

As proposed, when would the dog park in Howard Park open?

Where would the funds come from in order to make the proposed perpetually flooded area suitable for a dog park?

As proposed, who would be responsible for assuring that only people who pay for the dog park would be allowed access, as in Gilson?

All of us concerned with this issue are really looking forward to your answers.  
Thank you in advance for all your help.

Sincerely,

Jackie and Barry Spector

932 15th Street

847-494-5901

**From:** [Kelly Gouss](#)  
**To:** [Steve Wilson](#)  
**Subject:** [external] Dog park  
**Date:** Tuesday, April 6, 2021 10:49:00 PM

---

Hi Steve,

I am writing AGAINST a new dog park being created in Howard Park.

I am concerned this location is being proposed without due diligence. A dog park should take into consideration location (buffered from residences), maintenance, permeability of soil, adequate shade, availability of drinking water, and of course rules.

I have many concerns about this location, some of which include the following:

1) Has there been any investigation into whether there is a true need for another dog park? It seems like if fencing could be created at the West Park location, 2 dog parks could be sufficient.

How many licensed dog owners are there in Wilmette? What is the typical ratio of dog parks vs. owners?

2) Neighboring towns seem to be investigating having a dog park as well, and it seems likely that if we end up having one at Howard Park there will suddenly be an influx in additional noise, traffic and disturbances with residents from other towns also coming to this park as apparently there are not enough dog parks on the north shore.

3) The proposed location is too close to most guidelines I've seen in terms of proximity to residences.

4) Would there be some kind of compensation to those houses lining Howard Park on 17th Street and Washington Ave for the additional disturbances they would have to deal with as well as possible reductions in property values? If not, are the legal implications of this explored, as some places where dog parks were built on town owned land hundreds of feet from private residences led to lawsuits about noise and traffic.

5) Currently dogs are not allowed in Howard Park, so what is the rationale for changing it to a dog park? Are other areas being considered so that one can choose the best possible location? By contrast, Evanston is considering 8 areas and Brookfield, IL is considering 3 locations.

6) My kids have had many sports in this park: Soccer, Flag Football, Baseball, and Sports Camp. I have also seen practices for lacrosse and other small groups. If there were to be a portion of the park reserved for dogs only, it would take away the ability for much of this to happen. If the park was larger, such as Hamlin Park in Chicago (which is 9 acres) or West Park or Community Playfields in Wilmette which are quite large, this would be feasible but a dog park is likely to completely change the park.

7) As a parent whose child was bitten by a dog in Wilmette (on someone's personal property) and had to go to the pediatrician for treatment, I have concerns about dogs being the primary focus of the park.

8) the NE corner of Howard floods even with light rains, so does not seem to be the proper location. Also, does the site have permeable soil?

9) The creation of additional parking would take away from what is already a small park. Also, those who live bordering the park would likely have a lot of problems with getting to their own parking, especially the alley behind Howard Park.

10) Dog parks become very smelly over time. How would odor be controlled and what would be done about all the people who don't clean about their dog's poop? And again, would families be comfortable gathering near a smelly dog park? Or letting their kids play sports in near proximity?

I would hope that at a minimum, 1st interest would be assessed, 2nd goals would be determined (along with rules), 3rd would involve finding a site, as this seems to be jumping the gun. I would hope one would consider a variety of possible locations (not just narrowing in on one very small park that is already used for sports and by families and that does not allow for the minimum desired dog park size), as well as ecological and noise implication studies.

Here are two other Illinois town's explorations of dog parks, to demonstrate the effort and investigation that can go into choosing a proper location:

<https://brookfieldil.gov/wp-content/uploads/2017/10/Dog-Park-Report-FINAL.pdf>

And here is Evanston's:

<https://www.cityofevanston.org/government/departments/public-works/evanston-dog-park>

In sum, I love dogs but wonder why one would take a peaceful park that is used for sports and family gatherings and change it into a dog park that would eat up a large part of the park and require the need for additional parking and also is too close to residences. As I mentioned before, Hamlin Park in Chicago is 9 acres so they are able to have a separate dog park and still have sports, but with only a small park this does not seem to be the best idea. Why not find some undeveloped land and devote that space to a dog park, because even if there is an enclosed area, I have seen a LOT of people let their dogs off the leash and that is a safety hazard.

Thank you for your time and consideration,  
Kelly Gouss



**From:** [Ellen Kenemore](#)  
**To:** [Steve Wilson](#)  
**Subject:** [external] Proposed Dog Park in Howard Park  
**Date:** Tuesday, April 6, 2021 8:04:48 AM

---

Dear Director Wilson,

I am writing to express serious concerns about a proposed dog park at Howard Park. If it were not for the mailer Walter Keats distributed, I would have had no knowledge about this proposal. Even with that, to date I have not been able to find any specific plans and costs related to this proposal on the Park website.

1. It is unfathomable to me that such a major change to Howard Park would be considered without any input from people who live in the neighborhood and would be impacted by such a change.
2. Howard Park is used for soccer and softball practices and games spring, summer and fall. The level of foot and passenger car traffic from the additional people and dogs coming to the proposed dog park during these times would make for undue congestion and confusion in the area.
3. Third, on the weekends, parking is at a premium and the overflow from the small parking lot at Howard Park goes to the surrounding streets and makes parking on Spencer Street next to impossible. This would be even worse if a dog park were added.
4. Angled parking along with a fence is sure to change the nature of the current green space that makes the west end of Spencer Ave so attractive and inviting.
5. There is no overnight parking on the streets just east of the park, which under the best of circumstances is an inconvenience for overnight guests and for homeowners when any street/alley improvements are made or work on a garage makes it impossible to park off street.

While I have no objection to the addition of another dog park in Wilmette, I believe that the development of one at Howard Park at this point is ill-advised as the impact on the neighborhood has not been sufficiently explored and discussed with the community. It appears to be a rather impulsive recommendation as there is little to no information about it on the Park District website.

Thank you,  
Ellen Kenemore

[Ellen Kenemore, AM, LCSW](#)  
[ellen@kenemore.org](mailto:ellen@kenemore.org)  
Cell: 847-372-4404

**From:** [Arti Bedella](#)  
**To:** [Steve Wilson](#)  
**Subject:** [external] Elimination of open park land at Howard Park  
**Date:** Tuesday, April 6, 2021 7:58:05 AM

---

I am writing to express my concern regarding the proposed dog park at Howard Park in Wilmette. The park district has done an amazing job of providing clean and safe open park space for families to enjoy. I have been fortunate to coach youth baseball and softball for my children growing up and use Howard Park often. Below are my concerns regarding the proposed elimination of open park land for a dog park:

1. As a neighbor of the park, I would hope that neighbors would be consulted about significant changes to a park that is only a few houses away. No such communication took place.
2. The park is located in the middle of a neighborhood with loads of young children. The park regularly hosts girls softball tournaments, football games and other activities that bring hundreds of young children to the park. In addition, the young neighborhood kids regularly are playing baseball and softball there during the summer. Open space has become such an important part of Wilmette life, especially since the Covid pandemic. Fencing off 1.5 acres of valuable open space park land for dogs does not seem like the right direction for our community.
3. Parking is already at a premium for the park. Any changes that would lessen the number of parking spots should first be discussed with the neighbors that are most impacted.
4. If a new park board is being elected today, perhaps the new board could have open dialogue with neighbors prior to such a vote?
5. While I am not in favor of eliminating open park land, the current plan is to fence off the main entrance area of the park for dogs? Meanwhile the back side of the park butts up to the police station parking lot and a church parking lot? Why would the front entrance be a better long term solution than the back of the park? I suspect that given the locations of the ball fields, it's probably cheaper not to move them. If the better long term solution is cost prohibitive, then consider a one time fee for dog owners with renewal of their pet license to help underwrite the cost.

Please let me know what next steps are for myself and other concerned neighbors to address keeping our open park land.

Phil Bedella  
1602 Spencer Ave. (a few houses north of Howard Park).

**From:** [Laura Keslosky](#)  
**To:** [Steve Wilson](#)  
**Subject:** [external] Proposed Dog Park  
**Date:** Monday, April 5, 2021 11:13:41 PM

---

Hello, I'm emailing about the proposed dog park at Howard Park. Is there a link to the proposed plan? Not finding it on the park district website, I resorted to reading through comments on Nextdoor and a flyer created by one of the candidates for the board. I would much prefer an actual link to the plan—feelings seem to be strong about this and I want to make sure I have an accurate understanding of what's going on.

Thank you,  
Laura Keslosky

[Sent from Yahoo Mail for iPhone](#)

**From:** [Gordon Anderson](#)  
**To:** [Mike Murdock](#); [Steve Wilson](#)  
**Subject:** Fwd: [external] Howard Park proposed dog park  
**Date:** Monday, April 5, 2021 5:57:04 PM

---

Mike and Steve

You should have been copied , unless George reached out separately to you.

Regards

Gordon

Begin forwarded message:

**From:** "Huppert, George" <huppert@uic.edu>  
**Date:** April 5, 2021 at 5:20:26 PM CDT  
**To:** Gordon Anderson <ganderson@wilpark.org>, Julia Goebel  
<jgoebel@wilpark.org>  
**Cc:** harriet Lightman <harriettlightman@gmail.com>  
**Subject:** [external] **Howard Park proposed dog park**

Gordon Anderson  
President, Wilmette Park District Board

Julia Goebel  
Vice President, Wilmette Park District Board

April 5, 2021

Dear Mr. Anderson, and Ms. Goebel:

We very recently learned about the dog park proposed for Howard Park, and we are writing to share with you our concerns about the project. We are long-time residents of 17th Street. Our house, in which we have lived for 35 years, faces Howard Park.

Our concerns are as follows:

**TRAFFIC CONGESTION AND SAFETY.** At certain times of year — most notably, but not exclusively, during softball season — traffic in the neighborhood is terrible. There is insufficient parking to accommodate the park users throughout the year, but especially during the softball season. During this season, cars are parked on all of the side streets and all along the west side of 17th Street, creating tremendous congestion. Moreover, because cars park on the west side of 17th Street (and sometimes illegally on the east side) it is difficult to see ongoing traffic when making a turn from Lake Avenue on to 17th Street. These traffic problems are exacerbated by people driving too fast, by the number of cars parked in the area, and by the fact that 17th is a two-way street. We raise these concerns because a dog park would exacerbate this problem, creating a traffic nightmare and safety hazards for residents year-round and potentially at all hours of the day. The proposed new parking area will not be sufficient for the increased use of the park, and it will narrow 17th Street which will make the traffic problems even

worse.

**SANITATION.** A dog park will increase trash and related garbage, which will mean an increase in the local wildlife population and related sanitation problems.

Already, there is a problem in the area with mice, skunks, raccoons, the occasional coyote and even a fox or two. With dog-related rubbish increasing, we foresee the animal population further exploding.

**OPEN SPACES.** Howard Park is one of the few open spaces in Wilmette. It is used by children and adults alike. The neighborhood feel of this park will be destroyed by a dog park. The old growth trees in the park may need to be removed to accommodate this project, making this project environmentally unfriendly.

Finally, we were dismayed to learn about the proposed dog park only recently, and would ask why residents of the immediate neighborhood were not consulted at the initial planning stages. Not everyone is on Facebook and other social media, and so that outlet for informing the neighbors of these proposed plans may not be the most efficient. We ask that our elected officials consult with the neighbors whose tranquility, safety, and peace of mind will be impacted by this project.

Thank you.

Sincerely,

George Huppert & Harriet Lightman  
832 17th Street  
Wilmette

**From:** [Valli Stewart](#)  
**To:** [Gordon Anderson](#); [jogoebel@wilpark.org](mailto:jogoebel@wilpark.org); [Bryan Abbott](#); [Cecilia Clarke](#); [Mike Murdock](#); [Todd Shissler](#); [Amy Wolfe](#); [Steve Wilson](#); [Kristi Solberg](#); [Emily Guynn](#)  
**Subject:** [external] Objections to dog park at Howard Park  
**Date:** Monday, April 5, 2021 4:44:19 PM

---

Hello

I have lived on Washington Avenue, between Lake and 17th Street, for over 20 years.

We enjoy having Howard Park just on the other side of the alley. Over the years, this has been a place for pick up games on the grass with family, a place to watch birds, do outdoor workouts and just to gaze at the open green space.

While we have no objection to the impromptu gatherings of dog owners, we do oppose the construction of a formal dog park. I definitely do not want fencing to mar the view of the park space. I strongly object to additional parking and traffic along this residential area. I strongly object to any need to widen 17th Street.

Our community really needs to protect and preserve our green open spaces.

Children walk to school along 17th street, and having a dog park adjacent to this could cause them stress or anxiety if not lead to more risk of harm.

If it is determined that Wilmette actually needs another dog park, then I definitely think it is better to construct this at West Park based on my understanding that there is already a source of water for dogs, a plan for fencing at that location, and potential for the presence of dogs and the parking to be less disruptive to the residents.

Thank you for your attention,

Valli Stewart

1710 Washington Avenue

**From:** [Jennifer Latimer](#)  
**To:** [Steve Wilson](#)  
**Subject:** [external] In favor of a dog park  
**Date:** Monday, April 5, 2021 3:37:51 PM

---

Hi,

We're in favor of having a dog park in Wilmette behind St. Joe's. We live close by and would love an area our dog could safely run around with other dogs.

Thanks,  
Jen and Chris Latimer

**From:** [Thomas Kenemore](#)  
**To:** [Steve Wilson](#)  
**Subject:** [external] OPPOSITION TO THE PROPOSED DOG PARK IN HOWARD PARK  
**Date:** Monday, April 5, 2021 12:29:25 PM

---

TO: Steve Wilson, Executive Director

I'm writing to express my **strong opposition to the proposed dog park in Howard Park**. Primarily, **it will eliminate an important parking area** in the proposed area that has been an important resource for us and our neighbors for visitors, visiting guests, parking when there is construction or cleaning on our street, or when there is bad weather and alley access is not available, etc. Also, we already have a very **congested parking situation on our streets during the spring, summer and fall** when folks come to the park for sports, and fill up the street parking daily. Perhaps you could put the dog park at the other end of Howard Park or another park in Wilmette.

Thank you.

Thomas K Kenemore PhD  
1609 Spencer Avenue  
Wilmette, IL 60091  
312 502 5002 (cell)



**From:** [Lisa Filar](#)  
**To:** [Steve Wilson](#); [Todd Shissler](#)  
**Subject:** [external] Support for fenced in dog park in Wilmette  
**Date:** Monday, April 5, 2021 10:51:33 AM

---

Hi, my name is Lisa Filar and I live at 606 Central Ave in Wilmette. I've lived in Wilmette for just over 20 years, and have been a dog owner for 16 of those years. I strongly support the need for a fenced dog park in Wilmette. While the dog beach works for many dogs, it doesn't work for all since many dogs figure out how to run around the fence and become 'free' to explore all of Gillson park, and the non-fenced in area on the west side of town/in Glenview doesn't work at all as a dog park. So, it is fair to say that at this time, Wilmette does not have a good dog park solution.

I love Wilmette and I love our parks and want everyone to be able to enjoy them to their fullest. I'm not a paddle ball player, but understand the need for paddle courts. I'm not a basketball player, but understand the need for basketball courts. You get the point. The village routinely dedicates open park space for specific uses by a fraction of residents. Dedicating a space for dog owners should be no different. It's way past time for the village to build a dedicated, fenced-in, dog park in Wilmette.

Lastly, as our local election is upon us, I'll note that I have voted already and I have voted for Park Board candidates who support this position. Thank you in advance for your consideration of this issue.

Lisa Filar  
606 Central Ave.  
Wilmette, IL. 60091  
[filarlj@gmail.com](mailto:filarlj@gmail.com)

--

**From:** [Mike Murdock](#)  
**To:** [Steve Wilson](#)  
**Subject:** Howard dog park  
**Date:** Monday, April 5, 2021 10:00:02 AM

---

Perhaps you and I could spend a couple of minutes before or after our meeting tomorrow morning talking about the regulatory processes with respect to the dog park. I know that you had mentioned that you thought the village was open to some angle parking to replace in the lost parking lot, but I'm wondering if that was a conversation with Bridget or Mike. I'm further wondering whether they would send that to the transportation commission to evaluate. I also don't know if we need any special approvals because the village owns the land.

In addition, I'm curious whether we would have an entitlement process. If the fence would be over 4 feet within the front yard setback, there would be a variation. In addition, I think it is an open question whether this would be considered an expansion of our special use. I assume you would want to ask those questions of Mike or John.

It looks like there is a narrative out there that we have shown favoritism toward mallinckrodt neighbors at the expense of Howard park neighbors in terms of how we informed residents about the possible locations. While i think the two situations are very different (we didn't inform any homeowners at either park and mallinckrodt is a passive park while Howard is an active park) those distinctions may be lost on the casual observer. I plan to address this at the board meeting but my comments will be impacted by what approvals we would ultimately need from the village. So I will hope to have some answers prior to that meeting.

Just to keep you informed, I did have a brief conversation on the subject with Lisa as I was speaking with her about another issue and I brought this up after. But I don't want to interfere with staff to staff conversations, so I am informing you.

On a related subject, I want to confirm our earlier conversation that you expect to have a draft of the IGA back from Andrew either last week or early this week and you expect to be able to get it to district 39 in advance of our board meeting. Is that correct?

Thanks! Mike

Sent from my iPhone

**From:** [Jill Kutilek](#)  
**To:** [Steve Wilson](#)  
**Subject:** [external] dog park  
**Date:** Monday, April 5, 2021 9:14:57 AM

---

Good morning Steve,

My name is Jill Kutilek and I'm a newer resident to Wilmette. We like many other families got a Covid puppy last year and have really appreciated the convenience of Howard Park. I agree a new dog park is definitely needed in this community and honestly feel that Howard Park has enough room for kids to have play spaces/fields as well as our furry friends, as much of the time the park is not used at all.

Thank you for helping our community!

Kind regards,  
Jill Kutilek  
1916 Washington

**From:** [Kathy Martin](#)  
**To:** [Steve Wilson](#); [Kathy](#)  
**Subject:** [external] Dog park  
**Date:** Monday, April 5, 2021 12:15:55 AM

---

I have written a few notes in favor of dog parks, But this bantering is totally nuts it need to be done in right way. Mundelium park is clean and used by lots of people. The city sticker gets you on lot with any # of dogs that are licensed and up to date on shots. I was running my dog in area between Jr high and mid school after school hours and not during baseball or soccer times. The police were sitting in Jr High lot I asked if okay since one lady went ballistic on me one day. He said the police look other way since would prefer having dogs run in field not walked without leash on sidewalks and run into traffic and cause accidents. It is too bad to put police in this predicament and or have woman afraid of dogs and raising children the same way. I think Northfield, Glenview , wilmette could find a place that would work. The forest preserve lot under bridge on Lake would be great. I know that a lot of drugs are passed around there for years. Dog Park is needed and could be done well or other way. Like. Boat laNDING OVER BY LAGOONS THAT Winnentka does not think nice enough for those entering their town. That is forest preserve land used by community. With therapy dogs it would be great to have it wheel chair accessible

**From:** [SBC](#)  
**To:** [Steve Wilson](#)  
**Subject:** [external] Hoping Wilmette will have a dog park soon  
**Date:** Sunday, April 4, 2021 10:30:32 PM

---

Thanks for all you do. I'd be so grateful to have a dog park in my town. Thank you. Michelle Friedman 915 Illinois Rd. Wilmette

Sent from Command Center

**From:** [Catherine Barton](#)  
**To:** [Steve Wilson](#)  
**Subject:** [external] Dog Park  
**Date:** Sunday, April 4, 2021 5:45:50 PM

---

Hi Steve,

My name is Catherine Barton and I reside with my family at 1720 Walnut ave in Wilmette. We are walking distance to Howard Park and I'm very in favor of a fenced off dog park at that location.  
Thank you for your consideration.

All the best,  
Catherine Barton

Sent from my iPhone

**From:** [BARRY SPECTOR](#)  
**To:** [Steve Wilson](#)  
**Subject:** [external] Howard Park  
**Date:** Saturday, April 3, 2021 5:48:23 PM

---

Dear Mr. Wilson,

First of all, thank you for all that you do for Wilmette. We love using all of the parks in the Village. Today, we are writing to you regarding our concerns about the proposed dog park in Howard Park.

Our family has lived in Wilmette for over 36 years. We live on 15<sup>th</sup> Street and everyone in our family has used Howard Park for numerous Park District sponsored team activities throughout the years. We were disappointed and completely surprised to learn that a dog park is under consideration in the swampy eastern section of Howard Park. Even though there have always been dogs in our family, we hope that the Board rejects this extremely shortsighted and ill-advised idea.

We have always brought our dog to the dog park at Gilson Beach. Everyone we know enjoys bringing their dogs to that location. It is perfect. There is ample parking, it is easy to maintain and patrol, it does not disturb neighbors in any way, it hardly needs any maintenance and most importantly it doesn't flood. A dog park in Howard Park does not offer any of these attributes. Actually, it would be the exact opposite. We find it very hard to believe that if anyone in Village government sincerely believes that another dog park is needed in Wilmette (of which we have our serious doubts), there must be a much more suitable location in the Village.

This being the case, and our objections noted for the record, we are curious about the timeline for the Board moving forward with consideration of this issue. We believe that the next Park District meeting is scheduled for April 19th.

There are several questions for you that our friends, neighbors, other family members and we would appreciate your answers to:

What exactly is on the agenda in regard to the proposed dog park at the April 19<sup>th</sup> meeting?

When will there be an opportunity for public comment?

Does the Park District Board have the final say as to whether or not the dog park is actually opened in Howard Park or does it have to go thru other Village committees or governing bodies?

As proposed, when would the dog park in Howard Park open?

Where would the funds come from in order to make the proposed perpetually flooded area suitable for a dog park?

As proposed, who would be responsible for assuring that only people who pay for the dog park would be allowed access, as in Gilson?

All of us concerned with this issue are really looking forward to your answers. Thank you in

advance for all your help.

Sincerely,

Jackie and Barry Spector

932 15th Street

847-494-5901



**From:** [Lisa](#)  
**To:** [Steve Wilson](#)  
**Cc:** [Lisa](#)  
**Subject:** [external] Dog Park at Howard Park  
**Date:** Friday, April 2, 2021 7:32:15 PM

---

Dear Mr. Wilson,

My husband Brant Miller and I live at 1605 Spencer Ave. We have lived in Wilmette since 1979 and were here when Howard Junior High School was razed and Howard Park was created. At the time, there were several rules and regulations established regarding the use of the park. The park was deemed for use exclusively by children of Wilmette. No Adults could use the park for anything other than leisure walking or picnicking. The sports activities were relegated to daytime use by persons under 19 years of age with at least one team from Wilmette. The purpose of the regulations was to maintain the peace, cleanliness and safety of the McKenzie neighborhood; a neighborhood filled with young children. A significant number of these children have special needs. It is with great pride that McKenzie School is an inclusionary school offering children of all learning levels and skills the opportunity to be educated in their neighborhood with their friends.

A Dog Park at the east side of Howard Park would cause significant noise, filth and danger to those living in the homes surrounding Howard Park. A Dog Park would invite strangers into a neighborhood with inadequate parking. There are many neighbors who find the Gilson Dog Park sufficient for their needs. Unlike Gilson, Howard Park is surrounded by homes and it is those homes that you are looking to place a Dog Park up against.

A Dog Park at Howard will ruin our quiet neighborhood and cause the price of our homes to be significantly affected in a negative way.

We are adamantly against a Dog Park at Howard Park and will to anything in our power to dispose of this ill-conceived plan.

Respectfully,

Lisa Miller  
Miller Broadcast Management, Inc.  
616 W. Fulton Street  
Suite 516  
Chicago, IL 60661  
312-454-1111 Office  
312-391-5556 Mobile

Sent from [Mail](#) for Windows 10



**From:** [McCarthy, Erin](#)  
**To:** [Steve Wilson](#)  
**Subject:** [external] Additional dog park at Howard  
**Date:** Friday, April 2, 2021 5:52:58 PM

---

Against the proposal—that need has been addressed by the village.  
Erin McCarthy  
1534 Spencer

Get [Outlook for iOS](#)

**From:** [Lisa Schunack](#)  
**To:** [Steve Wilson](#)  
**Subject:** [external] Re: Dog Park in Howard Park  
**Date:** Thursday, April 1, 2021 8:27:01 PM  
**Attachments:** [The Dog Park Is Bad, Actually - The New York Times.pdf](#)

---

Hello Mr. Wilson,

Would you please confirm receipt of the email we sent to you on March 30<sup>th</sup>?  
A copy is below as well as the referenced article.

Also, would you advise which meeting is the one where our letter will be read and during which we and our neighbors can speak?

On the website, it shows one meeting for Monday April 12<sup>th</sup> at 7:30 pm for the Board of Park Commissioners. It also shows a meeting for a week later (the site shows Tuesday, April 19<sup>th</sup> but the 19<sup>th</sup> is a Monday) at 6:30 pm for the Parks & Recreation Committee.

We want to make sure that we attend (virtually) the relevant meeting as do many of our neighbors. There is a growing group that feels as we do and is very disturbed about having been in the dark about something that could impact their lives. The issue of parking is worse now that we understand that the proposal calls for the elimination of the existing Howard Park lot.

Doing further research today, we found an article in The Record which included a quote from you. It reads:

"It's just a matter of when it's going to happen," he said (referring to you) regarding the approval.

This seems as if this is a foregone conclusion and we would like to know why long term residents were never brought into the discussion.

Thank you,  
Lisa

---

**From:** "lisa@vascobuilders.net" <lisa@vascobuilders.net>  
**Date:** Tuesday, March 30, 2021 at 9:37 AM  
**To:** Steve Wilson <swilson@wilpark.org>  
**Subject:** Dog Park in Howard Park

Hello Mr. Wilson,

Per our earlier email exchange, we respectfully submit the following to be shared with the Park District's Board of Park Commissioners and any other decision makers regarding the proposed Howard Park Dog Park.

To begin with, we were made aware of this via a passing exchange with a neighbor. We were not notified officially in any way. We reside on Washington Avenue and so, our home faces

the SW side of the park.

For years, we have debated about the existing dog issue in the park. Having read the rules and regulations, we were aware of the policy that dogs were to be kept on leashes. For years, that hasn't happened and we never registered any official complaint. We love pets but have always been disturbed by the lack of consideration that a small but persistent group of dog owners demonstrate. Many times, dogs ran from their owners and into our back yard with their owners ignoring the pets while engrossed in conversation with other dog owners. We've shepherded dogs back to their owners. We've put up with the barking. We've put up with the multiple poo incidents. It has not been pleasant and there is virtually zero enforcement of any rules or regulations.

Proponents might argue that a specified dog park would contain some of these issues. We don't think that will work out. We think that the current issues would be compounded by another set of problems that will negatively impact the neighborhood, specifically the homeowners who live directly on Howard Park and the current users of the park as a sporting venue.

- One of the primary concerns is the parking. Should you create a destination dog park, the existing parking situation will be exacerbated. We already suffer from a lack of parking and an overly congested alley whenever there is any sporting event or even practice. So the addition of a dog park, the possible elimination of existing parking (we read this in the minutes of a past meeting), and the existing large sporting events will put a massive strain on parking. On a busy day in the spring, summer and fall, we are unable to easily get to our own garage or to find a spot for family members to park.
- The park already has 4 baseball diamonds, soccer nets, a football field, is a popular sledding destination and is routinely used for kite flying, walking and other activities.
- We urge the Board to consider the good of the neighborhood and its long term residents. We would be very interested in knowing how many of the proponents of this plan actually live on the park. In our interaction with and observation of the current users of the makeshift dog park are from all over. Some walk to the park (from their quiet streets) and some come from outside of Wilmette.
- Should you decide to proceed with the dog park concept (which is rife with problems), we urge the board to consider other options, including the Lake Avenue side of Vattman Park. A major section of that park is lightly used and does not have homeowners on all sides that would have to contend with the consequences of a dog park.

In summary, the idea of Howard park becoming a dog destination is at issue, not only for ourselves but the overall good of the park's surrounding homeowners. We embrace the lovely family and sporting activities of the park but to add the dog park to the mix will bring problems including noise, mess and parking demands far past capacity.

There are broader issues related to the dog park concept. We request that the attached article from the New York Times be read and forwarded to your legal department as it addresses the socialization myth, injuries, and diseases.

We will continue to check your website for the dates of the hearings and would like to be put on any notification list that is available.

Thank you for your time and consideration.

Lisa and Allen Smith  
Washington Avenue  
Wilmette, Illinois

**From:** [Michaela Shaw](#)  
**To:** [Steve Wilson](#)  
**Subject:** [external] Dog Park  
**Date:** Thursday, April 1, 2021 12:28:31 PM

---

Hi,

As a new owner of a puppy, would love to have a space where I can bring her socialize with other dogs and run free. Thus, I am in full support of the dog park. If you have any questions please lmk. Thanks!

Michaela

**From:** [Ken Keating](#)  
**To:** [Steve Wilson](#)  
**Subject:** [external] Wilmette Dog park  
**Date:** Tuesday, March 30, 2021 10:02:39 AM

---

Hello Steve,

Just want to mention that my wife and I are both in favor of a Wilmette dog park. We have been taking our dogs to the local school as well as around our neighborhood (Isabella and Lawndale). It would be very nice to have another alternative with so many new dog owners in our neighborhood.

Regards,

Ken & Libbi Keating



**From:** [Elizabeth Keating](#)  
**To:** [Steve Wilson](#)  
**Subject:** [external] please support the initiative to form a dog park  
**Date:** Monday, March 29, 2021 2:13:33 PM

---

Dear Steve -

Please support the ongoing requests for a dog park!! As a responsible dog owner, I leash walk my dog through my neighborhood. I frequently walk with a friend who has 3 large dogs. We would love to have a space where we could exercise our dogs, throwing balls and allowing them to roam for a bit off leash. I presently drive to Lake Forest and the Prairie Wolf dog preserve which is a very large space.

My neighborhood, Isabella and Lawndale, has seen a huge uptick in Covid puppies and it would be so much nicer to have a large open space where our pets could occasionally run free.

My experience with dog parks has been generally positive - owners pick up the mess - and have good control of their animals. I find owners who are hesitant, or dogs that may be shy, tend to go to parks during off hours to reduce the stress it puts on them personally.

Thank you for your support!

Elizabeth Keatin

--

Libbi Keating  
[lrkeating4@gmail.com](mailto:lrkeating4@gmail.com)  
415 - 608 - 8290

**From:** [karen de Loys](#)  
**To:** [Steve Wilson](#)  
**Subject:** [external] dog park  
**Date:** Monday, March 29, 2021 9:39:46 AM

---

please support the dog park for the community. The beach dog park is very dangerous in the winter and having a second option is very necessary and is good for the pups and the community.

Covid has been hard for many and gathering at a safe dog park is something that benefits all of us.

thank you

Karen de Loys

**From:** [Kristi Solberg](#)  
**To:** [Steve Wilson](#)  
**Subject:** Fwd: [external] Inquiry about Howard Park  
**Date:** Sunday, March 28, 2021 7:21:17 PM

---

Kristi Solberg  
Superintendent of Parks and Planning

Begin forwarded message:

**From:** Lisa Schunack <lisa@vascobuilders.net>  
**Date:** March 28, 2021 at 5:59:50 PM CDT  
**To:** Kristi Solberg <ksolberg@wilpark.org>  
**Subject:** [external] Inquiry about Howard Park

Hello,

I hope you had a nice weekend.

I am writing to inquire about something we heard from a neighbor regarding a proposal to turn part of Howard Park into a dog park.

We live on the park and thus, are very concerned and would like to attend any hearings related to this proposal.

Would you please direct me to the right person on your staff so that we can be informed?

Thank you very much for your time,

Lisa & Allen Smith

**From:** [Erik Medina](#)  
**To:** [Steve Wilson](#)  
**Subject:** [external] PRO dog park  
**Date:** Sunday, March 28, 2021 6:33:41 PM

---

Mr. Wilson,

I live at Ridge and Schiller. Howard Park is my go-to location to walk my dog. I am PRO dog park at this location. The parking lot at the eastside is unnecessary, and could easily be converted to a dog park.

Please bring this wonderful resource to our neighborhood.

Sincerely,  
Erik Medina

**From:** [Richard Fisher](#)  
**To:** [Steve Wilson](#)  
**Subject:** [external] In support of Dog Park in Wilmette  
**Date:** Sunday, March 28, 2021 6:19:31 PM

---

Hi Steve

In my over 25 years as Wilmette resident I have been continuously dismay how the disdainful the Wilmette Park district is towards dogs. Even simple things like a drink fountain that is dog friendly, like to one in front of the Village Hall, is absent. The extreme emphasis on playing fields for children when only 40% of the household have children (see [https://en.wikipedia.org/wiki/Wilmette,\\_Illinois#:~:text=2019%20\(est.\)&text=The%20racial%20makeup%20of%20the,were%203.3%25%20of%20the%20population.](https://en.wikipedia.org/wiki/Wilmette,_Illinois#:~:text=2019%20(est.)&text=The%20racial%20makeup%20of%20the,were%203.3%25%20of%20the%20population.)) is appalling.

Those of us without children, the majority of household in the village, would like areas for dog parks and quiet places to relax. In my observation (this is antidotal) dog owners are as responsible as parent's of children. Most clean up after their pet or have their child pick up after themselves, but some do not. Some dogs bark but then again kids scream and yell. Reasonable behavior should be expected from both dog owners (and their dogs) and children and their parents.

Thank you for listening.

Rich Fisher  
[RichFisher@ameritech.net](mailto:RichFisher@ameritech.net)  
847-226-5311 (cell)

How you relate to the issue, is the issue

**From:** [Tom Guillen](#)  
**To:** [Steve Wilson](#)  
**Subject:** [external] Dog park  
**Date:** Sunday, March 28, 2021 3:52:26 PM

---

Hey Steve,

We live at 606 Greenleaf and would love another dog park in the village.

Best,

Tom Guillen

**From:** [Anna Tenenbaum](#)  
**To:** [Steve Wilson](#)  
**Subject:** [external] Dog park support  
**Date:** Sunday, March 28, 2021 2:30:22 PM

---

Hi Steve

I just wanted to write to you about my support for the dog park at Howard. I think it would be a really great addition for the dog owners of Wilmette and use of the space.

Thank you  
Anna

Sent from my iPhone

**From:** [Jessica Siegel](#)  
**To:** [Steve Wilson](#)  
**Subject:** [external] Support for Dog Park in Wilmette  
**Date:** Sunday, March 28, 2021 12:35:53 PM

---

Dear Steve,

My husband and I just bought our first home in Wilmette, and we were so dismayed to learn there is no existing safe, fenced-in, year-round dog park in the city. Part of why we moved to the suburbs was for our large-breed, very social dog.

I sincerely hope you will support the proposal for a dog park at Howard Park, and/or additional locations in the city.

As new residents, seeing this enacted is one of our top priorities.

Thank you,  
Jessica Siegel



**From:** [Deborah Flapan](#)  
**To:** [Steve Wilson](#)  
**Subject:** [external] Dog park  
**Date:** Sunday, March 28, 2021 11:43:28 AM

---

Hello,

I wanted to voice my support for a dog park in Wilmette. The dog beach isn't usable year round, and it would be better to have a more central location.

Thanks for listening!

Best,

Debbie Flapan  
2914 Orchard Lane

**From:** [Jenny Beck](#)  
**To:** [Steve Wilson](#)  
**Subject:** [external] Small Dogs  
**Date:** Sunday, March 28, 2021 9:13:51 AM

---

Hi Steve,

I'd like to voice my support for a dog park in Wilmette, particularly including a designated space for small dogs. It's unsafe for the under 20-pound group to play with bigger dogs, yet they should have a space to run around and be dogs. I live in a condo so unfortunately don't have a yard for my dog to enjoy.

Thank you,  
Jenny

**From:** [Nobu Nakajima](#)  
**To:** [Steve Wilson](#)  
**Subject:** [external] Proposal for a new dog park at Howard Park  
**Date:** Saturday, March 27, 2021 6:21:33 PM

---

Dear Mr. Wilson,

As a long time resident of Wilmette who lives near Howard Park, I would like to express my concern about the proposal for a dog park at Howard Park.

Wilmette already has two dog parks, one at the Lakefront and the other at West end of the Village. From my central location near Howard Park, either location is about only five or so minutes drive away.

Unlike the two locations, Howard Park is in the middle of residential area with limited parking space. I was very surprised to see the plan to remove the current parking lot to make room for the dog park. As it is, when there are sports meets such as softball or football, the cars are already spilled out of the designated parking lot into the nearby streets, parking at corners blocking pedestrians crossing, obstructing fire hydrants and blocking private drive ways.

Although we are hopeful of better time ahead from the pandemic, WPD still need to spend additional resources to accommodate pandemic related issues. It does not seem the best use of WPD's resource on the third dog park considering we already have two and one of them, West Park, is not used by many dog owners. (I personally know this because I used to take our dog there regularly.)

I hear that there will be a meeting to discuss this proposal in April. I would like to make sure that my concern which is shared by many of our fellow Wilmette residents will be expressed and receive proper considerations.

Sincerely,

Nobu Nakajima

**From:** [David Zarfes](#)  
**To:** [Steve Wilson](#)  
**Subject:** [external] Wilmette needs a dog park!  
**Date:** Saturday, March 27, 2021 4:38:02 PM

---

Please help to make this a reality.

Thank you.

David Zarfes  
1420 Sheridan Road  
Wilmette

**From:** [eudys4@yahoo.com](mailto:eudys4@yahoo.com)  
**To:** [Steve Wilson](#)  
**Subject:** [external] Dog Park  
**Date:** Saturday, March 27, 2021 4:21:58 PM

---

I support a fenced in Dog park in Wilmette. We have to drive to west Glenview and give money to their community vs. our. What about fencing in the West Park dog park?

Thanks,  
Cynthia

Sent from my iPhone

**From:** [Jonathan Luecht](#)  
**To:** [Steve Wilson](#)  
**Subject:** [external] Dog park yes please  
**Date:** Saturday, March 27, 2021 12:28:55 PM

---

Hello,

Hope all is well and your families are safe.

Just wanted to let you know I am for having a dog park in Wilmette!

Having a dog and sloping them to be socialized with other dogs is as important as having kids in school it teaches them how to be socialize and behave around other humans and dogs while also allowing them some freedom.

Please let me know if I can help in any way

Jon Luecht

From: [Luana Soare](#)  
To: [Susan Wilson](#)  
Subject: [redacted] Wilmette dog park  
Date: Saturday, March 27, 2021 12:27:58 PM  
Attachments: [Susan Wilson 2021-03-26 at 2:54:47 PM.jpg](#)

---

To whom it may concern,

Our family firmly support the Wilmette dog park. It's important for the community! Us with dogs are simply looking for a safe space to let our dogs run free. Please, help us improve our neighborhood. Oscar and our family will love you!

Kindly,

**Luana Soare**

[luana@hustmianradio.com](mailto:luana@hustmianradio.com)  
315-262-9681



**From:** [Joan Oh](#)  
**To:** [Steve Wilson](#); [Todd Shissler](#)  
**Subject:** [external] Dog park at Howard Park  
**Date:** Saturday, March 27, 2021 10:26:39 AM

---

I support a dog park of adequate size at Howard Park. The exact location and size of said area can be debated, and I do not think additional parking is needed—it is unlikely dozens of dog owners with cars will gather there at one time. In addition, its hours could be limited when the fields are in heavy use during softball season.

Howard's location is very walkable for the central area of Wilmette, unlike West Park. That is why it's been an informal meeting spot for dog owners for decades. Now that my kids are older, and thanks to COVID, our family uses few park services other than the beach. All the programs you offer are great, but a dog park at Howard—we'd use that every day and so would many others. As a recent dog owner (yes we got a Covid puppy), I now recognize that the (recently socially distanced) chats between dog owners are an important form of community building—it's a way to get to know my neighbors like I did when my children were little and we all hung out at Vaatman Park day after day.

I've lived about 2 blocks from Howard Park for 20 years, without a dog, and its use as an informal dog park has never disrupted the area or the use our family made of it, from softball to frisbee to "sledding" down the little rise. If it is time to formalize the way the park is naturally and regularly used, please do so in a way that makes the local neighbors—both dog and non-dog owning, feel safe and heard. I think that Howard Park can continue to serve all of its neighbors.

Thank you,

Joan Oh  
1742 Highland Ave



**From:** [Mark Johnson](#)  
**To:** [Steve Wilson](#)  
**Subject:** [external] Howard Park Dog Park Proposal  
**Date:** Saturday, March 27, 2021 9:56:30 AM

---

Mr. Wilson—

I am writing to voice my opposition to the dog park proposal for Howard Park. We live on 17th Street directly across the street from the contemplated dog park, and share our neighbors' and others' opposition to the proposal. As a threshold matter, the proponents of the dog park have elected to pursue their idea without notice or transparency to those who will be most impacted. We only just learned of the proposal this past week through literature left by Walter Keats. While it is clear to those of us living across the street from Howard Park that the proposal is not well founded, the process to date has not been inclusive or designed to elicit comments from those in closest proximity. Echoing our neighbors' concerns, I'll underscore just a few things.

First, when we purchased our home 5 years ago, we had to work through the idea of living across the street from a public park where baseball/softball practices and games would be held in-season throughout the week and weekends. While this of course involves increased traffic and parking demands, it also includes evening activity with crowd noise and lights. On balance, however, we found that the large green spaces would be great for our young children, and we appreciate the views of the green fields and open spaces from the front of the house. As we understand the proposed dog park, it would eliminate these green spaces and severely limit the use of Howard Park — essentially narrowing it to baseball and dogs. At bottom, layering on an additional and substantial year-round use of the Park that further increases parking and traffic demands while also erasing its common areas that can be enjoyed by all residents is unwise and a poor use of Village funds.

To be clear, our opposition is not rooted in a “not in our backyard” mentality. Rather, it is based on the fact that we already accommodate a substantial public good in our proverbial backyard — the benefits and inconveniences associated with the current uses of Howard Park. We did not sign up for, or have any notice, that additional demands would be place on this limited space. We are all for residents shouldering their fair share of accommodating public goods, provided that this is spread equitably across the community and not disproportionately borne only by certain residents.

Second, with a home office that looks out on Howard Park, I have had the opportunity to daily observe the dogs visiting Howard Park over the past year. They are off-leash, run up onto yards and eliminate, and not infrequently sprint up onto our porch and take items. This behavior is not safe for our 1- and 5-year-old children, who are frightened by these encounters. While I understand that the dog park would be fenced in, I don't expect that the Village rules would be followed any more than they are today, especially as dogs approach and exit the dog park. It's unclear why the Village would reward ongoing, repeated violations of its ordinances and regulations with a costly dog park.

Finally, I wanted to highlight that Howard Park frequently floods exactly in the areas where the dog park would be sited. It short, it would be imprudent and a poor use of limited funds to attempt to fundamentally alter a landscape ill-equipped for a dog park. Given the near-exclusive presence of large dogs at Howard Park, moreover, we expect that the use of the dog park would mostly cater to large breeds, making the project even more niche and costly.

Thank you for the opportunity to comment. We hope that a more robust public notice and comment process will be implemented going forward.

Best.  
—Mark Johnson

814 17th Street  
Wilmette, IL 60091

**From:** [Dunlap, Todd](#)  
**To:** [Steve Wilson](#); [Amy Wolfe](#)  
**Cc:** [Molly Dunlap](#)  
**Subject:** [external] Dog Park  
**Date:** Friday, March 26, 2021 2:53:14 PM

---

Steve/Amy,

Hope all is well. As residents of Wilmette, we wanted to share some thoughts on a proposed dog park at Howard Park:

- If there is documented demand from the majority of the residents, agree that a dog park should be considered at another place in Wilmette besides Gillson Beach.
- The area of Howard Park that is contemplated is an area that already suffers from drainage issues. Putting in a dog park is only going to complicate these issues and create a mudbath. The drainage issues should be addressed first and foremost before making plans for any other potential use.
- As we understand it, there is a plan to also add diagonal/more parking spaces along 17<sup>th</sup> Street. For the people that purchased a house in that area knowing that they would live across from a generally quiet and less congested green space, this is an enormous impact. It will make the area more busy and noisy for what is a quiet and peaceful residential area. How is this being addressed and factored into the plans?
- Have any studies been done to understand where the highest demand is for a dog park?

Thanks and have a nice weekend.,

Todd and Molly Dunlap (Village of Wilmette Residents)

This message (including any attachments) contains confidential information intended for a specific individual and purpose, and is protected by law. If you are not the intended recipient, you should delete this message and any disclosure, copying, or distribution of this message, or the taking of any action based on it, by you is strictly prohibited.

Deloitte refers to a Deloitte member firm, one of its related entities, or Deloitte Touche Tohmatsu Limited ("DTTL"). Each Deloitte member firm is a separate legal entity and a member of DTTL. DTTL does not provide services to clients. Please see [www.deloitte.com/about](http://www.deloitte.com/about) to learn more.

v.E.1

**From:** [Maria Sundqvist](#)  
**To:** [Steve Wilson](#)  
**Subject:** [external] Wilmette dog park  
**Date:** Friday, March 26, 2021 1:04:49 PM

---

Hi,

I'm one of many new dog owners in Wilmette for the past year and heard the possible plans for a fenced in dog park in Howard park. I like this idea and really hope it can happen. A well exercised dog who gets to run around freely and play with other dogs is a happy dog. Especially during winter time and during weekdays it might be difficult for dog owners to find time to drive far to exercise their dog so it would be very convenient if we could quickly get over to Howard park with our dogs.

Thanks for reading my input and for the consideration!

Best regards/  
Maria Sundqvist

**From:** [Ellen Hainen](#)  
**To:** [Steve Wilson](#)  
**Subject:** [external] Dog park  
**Date:** Friday, March 26, 2021 11:00:01 AM

---

Hi Steve -

This email is to show our strong support for the proposed dog park in Wilmette. Thanks for your consideration.  
Ellen & Mike Hainen, 1950 Chestnut Ave.

Sent from my iPhone

**From:** [Kirsten Vaughan](#)  
**To:** [Steve Wilson](#)  
**Subject:** [external] Dog park needed  
**Date:** Friday, March 26, 2021 10:49:37 AM

---

Hi Steve,

I really feel Wilmette needs a dog park besides the beach. To allow dogs to run and play with each other while being separated from kids and families who do not want contact with dogs.

Thanks,  
Kirsten

1809 Walnut Ave  
Wilmette  
773 939 2816

Get [Outlook for iOS](#)

**From:** [Kristyn Gibson](#)  
**To:** [Steve Wilson](#)  
**Subject:** [external] Dog park  
**Date:** Friday, March 26, 2021 10:25:51 AM

---

Hi Steve,

I am a 16 year Wilmette resident and have been very happy with the park district offerings and general upkeep of our facilities. Yes we have a dog beach, but not every dog owner wants the mess of a wet dog! I strongly support a dog park at Howard Park - there appears to be space and Wilmette as a whole has plenty of park land that I don't think the space would be missed!

Please let me know how else I can support the cause!

Thank you!

Sent from my iPhone

**From:** [Joel Babbitt](#)  
**To:** [Steve Wilson](#)  
**Subject:** [external] Dog Park  
**Date:** Friday, March 26, 2021 10:19:38 AM

---

Steve,

A dog park to supplemental the dog beach, we would be a great additional safe place for dogs to release energy socialize. We have been active users of the dog beach for nearly 18 years as a resident of Wilmette. It has been exceptional destination and an additional bonus of belonging to the Park District. We use the dog beach year-round. Over the years, we have never seen an incident that would cause attention or a problem that would lead something to think that having more off leash dog friendly areas, isn't a good idea.

Thank you for your service and attention to this.

Sincerely,

Joel J. Babbitt, CLU  
President, Group Benefit Associates  
IPPFA VEBA Administrator  
1701 E. Lake Avenue, Suite 400  
Glenview, IL 60025

(O) 773-427-2060  
(F) 773-427-6875



**CONFIDENTIALITY NOTE:**

This e-mail message is for the sole use of the intended recipient(s) and may contain confidential and privileged information. Any unauthorized review, use, disclosure or distribution of any kind is strictly prohibited. If you are not the intended recipient, contact the sender via reply and destroy all copies of the original message.

**From:** [Lynda Behrendt](#)  
**To:** [Steve Wilson](#)  
**Subject:** [external] My Collie  
**Date:** Friday, March 26, 2021 9:37:13 AM

---

Steve Wilson

I would love to take my dog to a dog park in Wilmette

---

Lynda Behrendt  
847-254-1000  
[dr.lynda.behrendt@gmail.com](mailto:dr.lynda.behrendt@gmail.com)



**From:** [Diane Krieman](#)  
**To:** [Steve Wilson](#)  
**Subject:** [external] Support for dog park in Wilmette  
**Date:** Friday, March 26, 2021 9:19:44 AM

---

Please approve of building a fenced in dog park in Wilmette. I can't always handle the beach plus they can get around the other side of the fence.

**From:** [drrezaekhtera](#)  
**To:** [Steve Wilson](#)  
**Subject:** [external] I am opposed to Howard Park dog park  
**Date:** Friday, March 26, 2021 7:37:37 AM

---

Hello Mr. Steve Wilson,  
I reside at 1700 Washington Ave. I do not want a dog park in Howard Park.  
There is no need for additional dog park. There is one in Gilson Beach. Removing the existing parking lot in Howard Park to make a dog park does not make sense.  
There is lots of sport activities in Howard Park during summer and as it is parking is an issue. Also the additional dog park in West Park is sufficient.  
There has been a decrease in dog permits and dog population in Wilmette during 2019 and 2020. There is 11% less dogs registered in 2020 compared to 2019.  
There is no demonstrated need to add a third dog park (Gilson and West Park), to take away the parking lot and 1.5 acre of open space in Howard Park.

Regards,

Dr. Ekhtera

Sent from my Galaxy

**From:** [cheriweber83@gmail.com](mailto:cheriweber83@gmail.com)  
**To:** [Steve Wilson](#)  
**Subject:** [external] Support of dog park  
**Date:** Friday, March 26, 2021 6:47:17 AM

---

Hi there

Reaching out to voice support of a dog park in wilmette. We have lived here 16 years and often use the beach for our yellow lab but would love an option that isn't water or sand as well

Thank you so much

Cheri Weber

Sent from my iPhone

**From:** [Sabrina Harrigan](#)  
**To:** [Steve Wilson](#)  
**Subject:** [external] Support for dog park at Howard Park  
**Date:** Friday, March 26, 2021 6:37:38 AM

---

Hi Steve,

I wanted to express my support for the dog park proposal at Howard Park. When I moved to Wilmette from the city, I couldn't believe there were no dog parks aside from Gillson for me to bring my dog to play and socialize. We did this all the time in the city. I and my dog would love to have a dog park available to go to so he can exercise and socialize. With me and I'm sure others working from home as more of a norm, it'd be great to have this option as we will be spending more time in the community vs. our company offices.

Thanks,

Sabrina Harrigan

**From:** [Tara Giles](#)  
**To:** [Steve Wilson](#)  
**Subject:** [external] Support for Dog Park  
**Date:** Friday, March 26, 2021 6:26:11 AM

---

Hello,

We live at 2400 Greenwood Ave and want to express our support for a dog park. It would be a great addition to Wilmette for the many dog owners!

Best,  
Tim & Tara Giles

**From:** [Dan Hughes](#)  
**To:** [Steve Wilson](#)  
**Subject:** [external] Dog park at Howard  
**Date:** Friday, March 26, 2021 6:15:47 AM

---

Hello Mr. Wilson

My name is Dan Hughes and I live at 1521 Greenwood in Wilmette. I am writing to voice my support of expanding options for dog owners at public parks in Wilmette - specifically at Howard Park and West Park.

These facilities allow local residents an opportunity to make connections with others from different backgrounds and create a sense of community beyond those with similar incomes, backgrounds, and political views. And the dogs like them, too.

Thank you  
Dan

**From:** [Carol Babbitt](#)  
**To:** [Steve Wilson](#)  
**Cc:** [Carol Babbitt](#)  
**Subject:** [external] We want a dog park  
**Date:** Friday, March 26, 2021 4:34:20 AM

---

Hi Steve we really need a dog park and they are a safe space for dogs to release energy socialize and allow owners to satay local

Thanks fir you attention to this - ccb

Sent from my iPhone

**From:** [Jessica Delgado](#)  
**To:** [Steve Wilson](#)  
**Subject:** [external] In Support of a Wilmette Dog Park  
**Date:** Thursday, March 25, 2021 11:52:23 PM

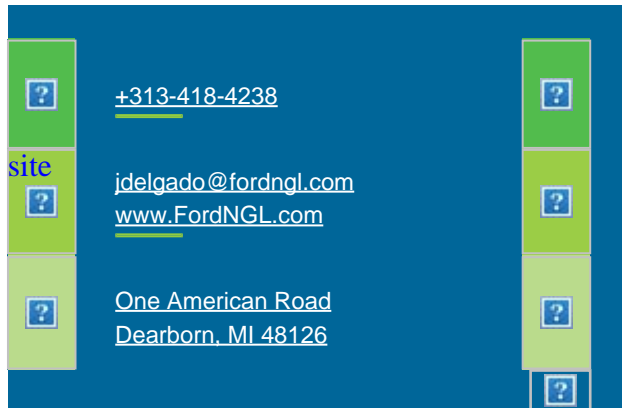
---

Steve,

I wanted to express my interest and support for a Wilmette dog park. This type of facility is a standard in any modern community with a pet population. It's also a much safer option than just having pet owners leverage existing park space with pets off-leash. As a relatively new Wilmette resident, I am proud that leaders like you are modernizing the community based on needs and feedback from concerned constituents.

Thank you!

--





**From:** [Jane Leland](#)  
**To:** [Steve Wilson](#)  
**Subject:** [external] Dog Park (in support)  
**Date:** Thursday, March 25, 2021 9:46:09 PM

---

Hello,

I am writing to express my strong support in favor of the dog park proposed for Howard Park. As a long time Wilmette resident and responsible dog owner, I have found Wilmette to be very dog un-friendly. We appreciate and use the dog beach at Gilson, but of course this is unsuitable and unsafe during the winter months. While our village has MUCH space catering to human, and particularly children's activities, I feel it short changes those of us families with canine members. My dog is a 10 year old certified therapy dog with whom I work in local schools, hospitals, and clinics. So it goes without saying that I want any dog devoted space to be well run and used by dog owners who know, control, and take responsibility for their dogs' behavior and clean up any messes.

Thank you for your consideration,

Jane V. Leland

[JaneLeland@ameritech.net](mailto:JaneLeland@ameritech.net)  
847-682-6707

**From:** [Paul Traynor](#)  
**To:** [Steve Wilson](#)  
**Cc:** [Paul Traynor](#)  
**Subject:** [external] Howard Park Dog Park  
**Date:** Thursday, March 25, 2021 6:58:41 PM

---

Hi Steve—

I live at 16th and Central, and would just like to voice my strong support for the dog park under consideration at Howard Park. Having a place for dogs to run that's accessible by foot in central Wilmette has been a pressing need for a long while.

I'm sure there is pushback from some NIMBY neighbors, as there always is, but I am positive this area would be well-used and be a net positive for the community. I can certainly understand why some folks don't prefer to have a section of park used exclusively for a dog park, but of course not all residents play baseball, tennis, soccer or many of the other specific-use features at some of our best parks. The important thing is that our public parks cater to all members, for whatever pursuits they enjoy.

Thanks for reading this, and thanks for your efforts on behalf of the village and community. I really appreciate it.

Best

Paul Traynor  
Hay Moon Media  
(224) 522-2242  
[www.haymoon.com](http://www.haymoon.com)

**From:** [michele grygotis](#)  
**To:** [Steve Wilson](#)  
**Subject:** [external] Support for a Dog Park in Wilmette  
**Date:** Thursday, March 25, 2021 6:42:36 PM

---

Dear Steve,

We are writing to ask for your support for a dog park at Howard Park. As long-time Wilmette residents and dog parents, we know this is something that is very much needed. We pay very high taxes to support park facilities for people/children (not to mention schools!) and are only asking for space in one park where our animals can play safely off-leash.

Thank you for considering our request.

Sincerely,  
Michele and Garry Grygotis  
1051 Cherokee Rd  
Wilmette, IL

**From:** [Brian Bentrup](#)  
**To:** [Steve Wilson](#)  
**Cc:** [Nati](#)  
**Subject:** [external] Wilmette Dog Park  
**Date:** Thursday, March 25, 2021 6:15:45 PM

---

Hello,

My family and I recently moved to Wilmette. I saw on Nextdoor a proposed dog park. We are writing to voice our support for a Wilmette dog park.

We lived in Chicago all our lives and frequently visited dog parks. It dramatically improves the quality of life.

Thank you for reading.

Sent from my iPhone so please excuse brevity and typos.

**From:** [joe novak](#)  
**To:** [Steve Wilson](#)  
**Subject:** [external] Dog park  
**Date:** Thursday, March 25, 2021 6:12:40 PM

---

Have been wanting a dog park in Wilmette forever! Really seems like a no-brainer.

**From:** [Eleanor](#)  
**To:** [Steve Wilson](#)  
**Subject:** [external] Dog park - please share with the Board members  
**Date:** Thursday, March 25, 2021 6:01:04 PM

---

Dear Director and Park District Commissioners:

I was at the initial meeting about a year ago when we requested that the Park District consider putting in a dog park at Howard Park. Howard Park made sense because for the 19 years that I have lived here, residents have been gathering at Howard on and off to have their dogs play and run off leash. Howard Park is a central location in the community and I cannot think of a more compelling demonstrated need than the natural gathering that consistently happens there. Police are called, everyone leaves and eventually dog owners start gathering again. This has been the cycle year after year. What does this tell us? That it is a good and needed location. Maybe a simpler solution at Howard could be the construction of a fence and limited dog park hours - similar to Gillson? It's not clear to me that all the configurations have been evaluated but I did get the impression that the presented plan might not be the only option.

Regarding the location on Lake, I have not met one dog owner that says this is a good place to go. There is no fence and more importantly, most people cannot walk there. What does that tell the Park District?

Gillson Beach is not a safe option during the winter months when the ice can break and a dog could potentially fall into the water.

I know you are hearing from many opponents about how awful a dog park will be, particularly from residents that live near the park who would like nothing to change, but I have been going to Howard as well as the dog beach for two years pretty much every morning and I want to share some of the positive things I have experienced:

- A family with small children and a parent with serious health issues bought a puppy. They often come to the park to watch the dog run and play with other dogs.
- A Wilmette teenager having some troubles including with the law. He came to the park with his dog and watching him interact with all the dogs was heart warming. It made me think of my own son and daughter and how our dog has been a source of complete happiness to them.
- I have become friends with someone that on most topics I disagree with, but I see that he is a kind man who loves his dogs. If I ever really needed help with something, I would think of him. Spending time with people in a neutral environment helped me be more open and accepting of people with different opinions.
- Family of mine that live in the city brought their dog a few times so that we could spend time together and let the dogs play outside. They now do much of their grocery shopping in Wilmette and would love to move here. They cannot stop talking about how nice everyone is here.
- A recent college graduate looking for work would come to the park and people were eager to help her make contacts and help with the job search.
- I met an older gentleman that was having troubles finding a vaccine appointment. I was able

to connect him with a contact that helped him get an appointment close to home.

There have been so many positive interactions. It is a place for residents of different ages and family situations to gather and interact in social circles that would not otherwise overlap. It provides a true sense of community. I hope that the Park District Administration and Park Board will continue to move forward to find a workable solution for its dog owner community.

Thank you for your consideration,

Eleanor Lipinski

1243 Gregory Ave

Wilmette, IL 60091

**From:** [kathy kennedy](#)  
**To:** [Steve Wilson](#)  
**Subject:** [external] Dog Park needed in Wilmette !!  
**Date:** Thursday, March 25, 2021 5:59:29 PM

---

I vote for a dog park in Wilmette ! We need a place for them to run a and play.

Kathy Kennedy

Sent from my iPhone



**From:** [Genanne LaCosse](#)  
**To:** [Steve Wilson](#)  
**Subject:** [external] Howard Dog Park - Not a place for dogs  
**Date:** Thursday, March 25, 2021 5:42:49 PM  
**Attachments:** [image003.png](#)  
[image004.png](#)  
[image005.png](#)  
[image006.png](#)

---

I wanted to share my concern about the dog park being at Howard....

- Dog parks should not be located near where adults/kids play! Both of my kids have participated in sports camps at Howard, play baseball, soccer, fly drone, etc on that field. Not all dogs are nice, they are loud and scare many adults/kids. Sorry, kids safety come before dogs. This is way both current dog parks are not near residential areas.
- For those that live on 17<sup>th</sup>, a dog park across the street will bring down their property taxes, and they were there before a dog park. It's not like they moved in and it was already there and complaining- you need area area resident voices to be heard.
- I understand a lot of people bought dogs during the covid months, but they knew Wilmette had two functioning dogs parks. If they do not like them, it's their fault and the residents should not have to fit the bill because their high-end dog does not like what is available. That's what back-yard are for
- I'm sure those who are in favor of the dog park would think different if the suggested area was across the street from their homes
- Parks should not be taken away from people use for dogs, even if there was a fenced in area....During these covid month...it's more important than ever that kids and adults have a place to play for mental wellbeing.

Thanks for listening to my concerns



**Genanne LaCosse**  
HUMAN RESOURCES GENERALIST

**O** +13127066503  
35 West Wacker Drive, 18th Floor  
Chicago, Illinois 60601

NEW YORK | CHICAGO | PHILADELPHIA  
[razorfish.health](http://razorfish.health)



-----  
Disclaimer The information in this email and any attachments may contain proprietary and confidential information that is intended for the addressee(s) only. If you are not the intended recipient, you are hereby notified that any disclosure, copying, distribution, retention or use of the contents of this information is prohibited. When addressed to our clients or vendors, any information contained in this e-mail or any attachments is subject to the terms and conditions in any governing contract. If you have received this e-mail in error, please immediately contact the sender and delete the e-mail.

**From:** [Michelle Baby](#)  
**To:** [Steve Wilson](#)  
**Subject:** [external] Dog Park  
**Date:** Thursday, March 25, 2021 5:05:06 PM

---

Steve -

I'd like to request that Wilmette moves forward with creating a space at Howard Park for dogs to run freely and get much needed exercise off-leash.

Thank you!

Michelle Bâby

**Michelle Bâby**

**c: 312-933-7337**

**From:** [Michael Watkins](#)  
**To:** [Steve Wilson](#)  
**Subject:** [external] New/increased number of dog parks  
**Date:** Thursday, March 25, 2021 4:54:58 PM

---

Please advocate for, support and provide space and funding for more dog parks and dog-friendly areas in Wilmette. We're now on our second dog (1st lived 15+ yrs) and with increase in dog ownership recently we need more space and resources. Feel free to contact me at any time; thanks for your help and consideration.

Michael Watkins  
847.951.8480

Sent from myPhone

**From:** [Barbara Queen](#)  
**To:** [Gordon Anderson](#); [Julia Goebel](#); [Bryan Abbott](#); [Cecilia Clarke](#); [Mike Murdock](#); [Todd Shissler](#); [Amy Wolfe](#); [Steve Wilson](#); [Kristi Solberg](#); [Emily Guynn](#)  
**Cc:** [Blair Milton](#)  
**Subject:** [external] Objection to Dog Park at Howard Park  
**Date:** Thursday, March 25, 2021 4:52:51 PM

---

Hello Wilmette Park District Board and Staff,

We recently learned about the Wilmette Park District proposal to put a 1.5-acre dog park along the East side of Howard Park. We live on 17th Street, directly across from the park and are alarmed that the WPD would consider such a proposal.

We read in the minutes from the 3/15/21 WPD meeting that these discussions have been going on for months. We were dismayed to learn that residents near one of the proposed sites, Mallinckrodt Park, were solicited for feedback in early February, but no similar consideration has been given to the residents surrounding Howard Park.

A letter to the Board sent 2/15/21 references a 12/8/20 memo that concluded as follows:

- Howard Park no space
- Mallinckrodt Park no dog park allowed within Park
- West Park no conclusion was provided regarding this park

It seems inconceivable that it was initially observed that there is “no space” for a dog park at Howard Park, and yet the committee resumed discussions with plans for a “larger dog park”. There is, indeed, no space for a large dog park along the East side of Howard Park. The size of the proposed dog park is out of proportion with the community. 1.5 acres is huge and would deplete the remaining green space in Howard Park. In contrast, the Lakeshore East dog park in downtown Chicago is a mere .1 acres. It provides an enclosed area for dogs and serves a community of almost 14,000 residents in the immediate area. Mallinckrodt Park is 14 acres, and the proposed dog park there would be 1.4 acres (10%) of the park. Howard Park is 8.7 acres, and the proposed dog park here would be 1.5 acres (17.25%).

The minutes from the meeting also refer to the potential space in Mallinckrodt being “chosen as it is furthest from houses and condos.” Satellite imagery clearly shows that Howard Park is much smaller and closer to homes than Mallinckrodt Park. ***The Howard Park proposed site is literally 30 feet from our front yard.*** Commissioner Murdock “stated there would be an outcry” about the Mallinckrodt location. There is certainly an outcry from us about the proximity of a dog park to our home. We hope the WPD is not seriously contemplating putting a big, noisy dog park, with adjacent diagonal parking on our front step!

We strongly object to Howard Park as the location for a new dog park for the following reasons:

### **1. Noise and Traffic**

The proposal would result in horrible congestion and noise from traffic, cars, people, and dogs at all hours of the day and into evening, effectively destroying any tranquility. 17th Street is a narrow, quiet street with just enough width to accommodate passing cars. It is lined exclusively with modest family homes and is hardly an ideal site for a large dog park and diagonal parking directly in front of our homes.

Two objections to a nearby dog park from Mallinckrodt residents sum up our view concerning Howard Park perfectly:

- *You would not want to live near a dog park where people are continually coming and going with their dogs to a park where everyone nearby can hear the yaps, howls, and barks throughout the entire day and possibly into the evening.*
- *The inherent noise of a dog park is not what we signed up for. We moved here for a tranquil atmosphere in which to live. I like dogs, but not a yard full of them in my backyard.*

## **2. Safety and Sanitation**

Just like Mallinckrodt Park, Howard Park is used consistently by children playing sports or general recreation, elderly residents going for walks, and families enjoying some relaxation. An increase in unleashed dogs poses liability issues, increased health and sanitation risks, and the potential for dangerous encounters with park visitors, especially children.

Several objections from Mallinckrodt residents also reflect our Howard Park concerns:

- *Unleashed dogs pose an increased risk of attacks to all park visitors and will create potential safety and liability issues.*
- *The health factor alone is a major problem. Parasites present in dog waste are harmful to dogs and humans.*
- *There is the issue of sanitation, disease, and parasites that come with the construction of a dog park.*
- *A dog park may mean owners bringing their unvaccinated dogs that may spread disease.*

## **3. Reduced Public Space**

Residents of Wilmette currently have an expansive dog park at Gillson Beach and another one at West Park. Additionally, most local residents also have yards of their own. Howard Park is one of just a few green spaces in the community, and the park already welcomes dogs. The East side of the park is a lovely place to wander or sit on benches under the shade of beautiful trees. It is a peaceful oasis, removed from the infields. There are many people who live here who do not have dogs and do not use the sports spaces. We also require a place to walk and commune with nature, and our needs should not be superseded by those of canines.

Several observations from Mallinckrodt residents mirror ours:

- *People are allowed to walk their dogs on a leash through the park. Why isn't that enough?*
- *When do dogs take priority over people who purchased property near the park so they would have the benefit of enjoying the beauty and sounds of nature, not the barking and running of dogs?*
- *Dedicating half of the park to dogs and their owners seems unfair to all others who use the park.*
- *We enjoy seeing our dogs run freely in our fenced-in backyard, and we put leashes on them for walks.*

## **4. Noisy Construction Project**

The project would include demolishing the existing parking lot and replacing it with diagonal parking along 17th Street. This would only be possible by expanding the width of the street, requiring the removal of 14 majestic trees (many of which are up to 75 years old) lining the curb on the West side of the street. Even such a monumental project would not widen the street enough to facilitate easy traffic flow. This expensive proposal would result in months of construction noise and closed streets.

## **5. West Park is a Better Option**

Many residents have already expressed support of an enclosed dog park at West Park (Steve Wilson stated on 3/3/21: "*There will be fencing at West Park in the coming months*"). West Park clearly seems to be the optimal choice and would not result in any of the legitimate concerns expressed by the community regarding either Howard or Mallinckrodt Parks.

We agree with the following support from Mallinckrodt residents for a West Park location:

- *Despite wanting a dog park, I don't agree with the placement in the park. Beautiful green spaces are becoming a rarity.*
- *Dogs don't care about trees and ruin the grass. A dog park can be easily placed in a more industrial, less-used space.*

*West Park is already used for more general recreation and has plenty of parking space.*

- *West Park is the location of choice since there is already a dog play area which might be expanded.*
- *With Gillson and West Park no one can say that the WPD doesn't have the interests of "man's best friend" at heart.*
- *It will blend into the surrounding landscape without greatly disrupting the overall area or how it's currently being used.*
- *West Park is more accessible, much bigger, non-residential, and currently an underutilized area.*
- *The benefit of the West Park proposal is that it would not take any open space away from Wilmette's parks.*

Howard Park is nestled in a quiet, residential neighborhood. We chose to live in a home overlooking a beautiful park, not a busy parking lot. The expense and rationale for an enormous enclosed area for dogs to run around without leashes should not take priority over the demand for a peaceful place to live by the residents adjacent to the park.

We hope the proposed Howard Park location for this project will not be approved.

Sincerely,

Barbara Queen and Blair Milton  
828 17th Street

**From:** [Shayda Crosby](#)  
**To:** [Steve Wilson](#)  
**Subject:** [external] Support of a dog park in Wilmette  
**Date:** Thursday, March 25, 2021 4:50:28 PM

---

Mr. Wilson,

We are emailing to write a short support statement of a dog park approval in Wilmette. There is only one fenced dog area at the beach for a very large village. Plus going to the beach in the cold months for our smaller dog isn't feasible for us. We are on the west side of Wilmwtte. It would be great if the village approves another park. Thanks!

Shayda Crosby  
600 Lacrosse Ave

All typos I blame on my iPhone



**From:** [dhastings1313@gmail.com](mailto:dhastings1313@gmail.com)  
**To:** [Steve Wilson](#)  
**Cc:** [dhastings1313@gmail.com](mailto:dhastings1313@gmail.com)  
**Subject:** [external] Dog Park  
**Date:** Thursday, March 25, 2021 4:42:20 PM

---

Mr Wilson

It has been too long. I hope you and your family are doing well.

I hear that there is discussion pursuant to a dog park being built in Wilmette close to Howard Park.

Not that my 2 cents means anything, but my son and I and our two rescue dogs would be all in favor of a place for our dogs to roam and play safely. And we would certainly help support in the development and building of such a wonderful place.

I hope you are safe and healthy and things are well. Looking forward to a great summer at the beach and hope to see you soon

Dan



Virus-free. [www.avast.com](http://www.avast.com)

**From:** [Sally Christ 123](#)  
**To:** [Steve Wilson](#)  
**Subject:** [external] Dog park in wilmette  
**Date:** Thursday, March 25, 2021 4:40:13 PM

---

Please consider creating a safe dog park in wilmette. There are very few places that we can take our dog that are fenced in, safe and where dog lovers take their dogs.

Thank you!

Sally Christ  
312-371-1995

**From:** [Tina Herpe](#)  
**To:** [Steve Wilson](#)  
**Subject:** [external] Dog Park Supporter  
**Date:** Thursday, March 25, 2021 4:26:29 PM

---

Dear Steve,

I am a Wilmette resident who strongly supports the creation of a completely fenced in dog park.

The Gilson Park dog beach is not completely enclosed and not a rear-round option.

A dog park would be a great addition to the many amenities we enjoy in Wilmette.

Thank you,  
Tina Herpe

Sent from my iPhone

**From:** [Marty McDonnell](#)  
**To:** [Steve Wilson](#)  
**Subject:** [external] Wilmette - Disc Golf Possibility  
**Date:** Thursday, March 25, 2021 4:22:10 PM

---

Steve,

I'm a homeowner at 2215 Birchwood Ave, Wilmette, IL 60091 for the last 4 years. I recently heard there is a proposal to add a disc golf course to Gilson Park and I just wanted to let you know that I fully support the proposal. I think it would be a great addition to an already incredible parks department in Wilmette. Thanks for your time and consideration.

Thanks,

Marty McDonnell  
2215 Birchwood Ave, Wilmette, IL 60091  
c: 913.788.0509

**From:** [Lorenza Amigo](#)  
**To:** [Steve Wilson](#)  
**Subject:** [external] Dog Park at Howard - YES  
**Date:** Thursday, March 25, 2021 4:08:55 PM

---

Dear Mr. Wilson,

My name is Lorenza Amigo, I live on 16th and Central Ave and I love taking my dog to Howard Park. There's been an ongoing discussion about it today on Parents of McKenzie facebook group and also on Next Door. It seems like the opposers are concerned with the proposed location of the dog park within Howard and the new parking spaces being proposed on 17th street. Has the “top” of the park bordering the warming house, St Joe and the parking lot on Ridge south of St Joe been considered? That way, it's not in a flood plain, it's not near houses, the parking would be on a non-residential street (Ridge), and there is already a parking lot south of St. Joe. This may be an opportunity given that the police station is going through a re-build anyway.

Would love to know your thoughts and ways that we can support this working for all residents!

**From:** [Karen Begley](#)  
**To:** [Steve Wilson](#)  
**Subject:** [external] Dog Park at Howard Park  
**Date:** Thursday, March 25, 2021 4:05:45 PM

---

Dear Mr Wilson,

As a neighbor of Howard park and a 17th street home owner, I am distressed about the proposal to fence 1.5 acres (the entire street front of the park) for use as a dog park. The added expense of removing the current parking area and replacing with angled street parking seems to be needless. I can imagine that the fencing will be of an unattractive chain link variety. I have driven past the West Park designated dog park area and have not seen much use. Why is a third park, especially one in a residential area, necessary?

I have owned a dog and used Gilson Bog Beach and found it quite adequate and only occasionally overused.

I have resided at this address for over 45 years and feel that I know this park and my neighbors.

Please reconsider placing a third anywhere in Wilmette until the one at West Park becomes crowded.

Thank you.

Karen Begley  
835 17th St  
Wilmette,  
IL 60091

**From:** [Lucy Kaplan](#)  
**To:** [Steve Wilson](#)  
**Subject:** [external] Dog park  
**Date:** Thursday, March 25, 2021 4:01:35 PM

---

I'm a 2 dog owner and a resident of Wilmette for over 20 years. I live a block from the Community Rec center. Although I walk my dogs there frequently, that space isn't really dog friendly. With a tot lot and tennis courts as well as a baseball field, the space is really intended for families w children. Obviously, it is not fenced at this very busy intersection.

I support a fenced in area that's dedicated to dogs and their owners. Please consider an appropriate space at Howard Park for village canines and their owners.

Thank you,  
Lucy Kaplan

[Sent from Yahoo Mail on Android](#)

**From:** [Deirdre REDDING](#)  
**To:** [Steve Wilson](#)  
**Subject:** [external] Save Wilson  
**Date:** Thursday, March 25, 2021 3:55:52 PM

---

We would love a dog park on Wilmette. Thank you.

Deirdre Redding  
2131 Washington Ave



**From:** [Allison Steinback](#)  
**To:** [Steve Wilson](#)  
**Subject:** [external] Dog Park  
**Date:** Thursday, March 25, 2021 3:48:31 PM

---

Miller (my 2yr old Newfoudland) and I would love a fenced in dog park in Wilmette! We use the dog beach, but would love a space to use in the winter and times where we don't want a wet dog. A fenced in dog park would be a great addition to the Wilmette Parks.

From: [Christine Balzano](#)  
To: [Steve Wilson](#)  
Subject: [external] SUPPORT for a dog park at Howard Park  
Date: Thursday, March 25, 2021 3:03:53 PM

---

Steve,

As with many Wilmette residents, I enthusiastically support a dog park in central Wilmette—currently proposed at Howard Park. A group of dog owners began this journey about 18 months ago- coming to meetings and seeing what the possibilities might be. We truly appreciate the work the park district has put into considering this and finding a viable option that benefits ALL members of the Wilmette community.

There is ample green space in Wilmette that makes this very small section of the overall Wilmette green space nominal. I am writing in support of this space and have highlighted 5 key reasons.

1- **green spaces around Wilmette are funded by everyone's tax dollars.** Parks, playgrounds, baseball fields, basketball courts, soccer fields, SIGNIFICANT green space for our retirement community, soccer fields, football fields, tennis courts, a beach, beach volleyball space, a boating area. OF the many things I have listed, MANY people do not benefit, yet there money is spent on these things. Equal representation of interests is a reasonable request to show Wilmette residents we care about EVERYONE's interests- not just certain ones.

2- **the safety of our dogs and residents is of primary importance.** A properly fenced area DOES NOT EXIST in Wilmette. The dog beach at Gillson is a beautiful space, but is not adequately fenced, nor ever can be. Dogs can swim out far (as mine does) and go around whatever fencing may be included and put people at risk. I have seen on MANY occasions and been the observer to hateful comments about dogs needing to be controlled so walkers that come right up to the fence (or cut through the dog park on their walk) can feel safe. Dog owners want that too. In addition, when ice forms in winter, the dog beach is unsafe. Aside from the fact dogs can get injured from sliding on ice (torn ligaments, etc.), they are not aware that the ice that has formed is unsafe to be on. I have witnessed dogs climbing on the rock wall that formed this winter

3- **Dog owners pay an additional fee** to have the existence of Gillson beach AND pay an additional tax for dogs to be registered— that should be **put to use for DOG OWNERS.** Tennis players, athletes, playground users and park goers DO NOT pay anything additional to use the green spaces ALL of our tax dollars support.

4- **A dog park creates community.** In the 3.5 years I have been talking my dog to Howard, I have built a community and met neighbors I otherwise would not know. And that goes beyond just those who show up with dogs. I have a very active dog and have taken her to Howard, Gillson, West Park or elsewhere virtually every single day of the week- rain or shine, cold or hot- for at least 30 minutes to an hour. I have literally only missed about 5 days a year or when we are out of town. We meet our neighbors on the walk to and from, we meet other dog owners, and we often get the pleasure of knowing our police force a little better. Building community should be what we are about. Not excluding part of the community that uses the space most.

5- **A dog park that is in walking distance and allows for less driving means less emissions, traffic and helps us be more green-** which should align with the viewpoint of preserving green spaces.

Thank you for your time.

Many thanks,  
Christine Balzano

**From:** [Todd Shissler](#)  
**To:** [Steve Wilson](#)  
**Subject:** Fwd: [external] Dog park  
**Date:** Thursday, March 25, 2021 2:55:36 PM

---

Please respond and forward to the other commissioners

Sent from my iPhone

Begin forwarded message:

**From:** Stephanie Hon <stephmurdoch@yahoo.com>  
**Date:** March 25, 2021 at 3:37:01 PM EDT  
**To:** Todd Shissler <tshissler@wilpark.org>  
**Subject:** [external] Dog park

I just wanted to send an email to show my support for a dog park. We have lived here since 2006 and have always had to drive to different areas to let the dogs run. I understand we have a beach, but first they get wet and sandy there, and second it's not exactly easy parking in the summer. We alike so many others, got another dog (puppy) this past year and she needs to run and get some energy out so a dog park near us would be helpful. Thank you for your efforts.

Stephanie Hon

Sent from my iPhone

**From:** [MaryAnne O'Keefe](#)  
**To:** [Steve Wilson](#)  
**Cc:** [MaryAnne Boley O'Keefe](#)  
**Subject:** [external] No Dog Park Needed at Howard Park  
**Date:** Thursday, March 25, 2021 2:49:39 PM

---

My name is MaryAnne O'Keefe, a Wilmette resident in the McKenzie district (on Lawndale).

I oppose any proposed dog park in Howard Park. There are sufficient dog friendly park district spaces at Gillson Beach and West Park for residents and non-residents to run their dogs aside from their own property.

I do not own dogs but was raised with them. Green spaces like Howard Park surrounded by residential property and with throngs of people of all ages there for football and softball games do not have to become spaces that cater to people's pets. I want my children to be able to run at Howard for soccer practice and free play without stepping in feces or having to navigate uncertainly near a fenced space where dozens of dogs may be without leashes.

Not even considering additional barking, dog waste, traffic and congestion in a tight residential area, Howard Park is not the answer to a dog park question.

Green space should remain open and available for the residents who pay taxes, not their furry friends. There are already two spaces in Wilmette to cater to dog owners' wants.

Thank you for your consideration,  
MaryAnne O'Keefe  
132 Lawndale, Wilmette  
C 773 255 5613  
[maryanneokeefe@gmail.com](mailto:maryanneokeefe@gmail.com)

Sent from my iPhone

**From:** [Nicole Dominguez](#)  
**To:** [Steve Wilson](#)  
**Subject:** [external] Howard park  
**Date:** Thursday, March 25, 2021 2:44:51 PM

---

Good afternoon.

I live at 1703 Lake Ave (southwest corner of Lake & 17th). I have heard that the park district might make part of Howard park a dog park. I don't have dogs and I wouldn't want a dog park there but the idea of slanted parking would make 17th an even busier and narrow road and therefore not the often quiet place that it is. If neighbors get a say in this; my vote would be no to slanted parking and a dog park.

Thank you.

Nicole Dominguez

**From:** [Laurie Elkin](#)  
**To:** [Steve Wilson](#)  
**Subject:** [external] Dog Park at Howard Park  
**Date:** Thursday, March 25, 2021 2:34:58 PM

---

Hi Mr. Wilson,

I write in support of a fenced-in dog park at Howard Park. I have been a resident of Wilmette for 20 years and have had dogs the entire time. Wilmette is in a desperate need of a fenced-in area for dogs to run and socialize. While the dog park at Gilson Beach works for some dogs and owners, it does not work for dogs who need to be in a completely fenced-in area.

Laurie Elkin  
(224) 392-7284

**From:** [Kelly McNulty](#)  
**To:** [Steve Wilson](#)  
**Subject:** [external] Wilmette dog park - Howard Park  
**Date:** Thursday, March 25, 2021 2:05:06 PM  
**Attachments:** [ATT00001.txt](#)

---

My name is Kelly McNulty and I have lived next to Howard Park all my life. A fenced in area for a dog park is NEEDED! I am 100% in support of this and it would be beneficial for the community, dog owners all around Wilmette and the park as a whole! Dogs and owners will gather in Howard park regardless so why not put up a fence and make it a designated dog park area so that everyone can stay safe. I live in the area and my backyard opens up to Howard park. I am 100% in agreement and support this park as do my surrounding neighbors.

Thanks,

Kelly McNulty

And Carl McNulty



**From:** [Todd Shissler](#)  
**To:** [Steve Wilson](#)  
**Subject:** Fwd: [external] Howard Dog Park - in favor  
**Date:** Thursday, March 25, 2021 2:04:58 PM

---

Sent from my iPhone

Begin forwarded message:

**From:** Katherine Gossard <kathygossard@gmail.com>  
**Date:** March 25, 2021 at 3:03:53 PM EDT  
**To:** Todd Shissler <tshissler@wilpark.org>  
**Subject:** [external] Howard Dog Park - in favor

Dear Todd,

I went to voice my opinion in favor of the dog park at Howard Park. I've lived across the street from Howard Park for 17 years and it has been natural gathering ground for neighbors and their dogs to stop and let the dogs play. That area has been well-kept and cared for by the owners who allow their dogs to run free. The only concern I've heard is that a dog might get loose and run into the street, or scare a child. If there was a fence, that wouldn't be a problem! My neighbors and I all have dogs and we used to gather there in the morning. Recently somebody started calling the police every day, even if there is only one dog/owner there off leash. The police have told us they have dogs and that they don't want to bother us, but the same person keeps protesting.

Much of the area there is unused on the lower (east) side. Those are warm-up softball fields for the men's league, and sometimes there are girls softball games, but the eastern strip (where the park district is showing as a potential dog park) is far beyond the playing field. I am in full support of this dog park and I hope it happens!

Kathy and Brad Gossard  
1755 Washington Ave.

Sent from my iPhone

**From:** [alewinwaldman](#)  
**To:** [Steve Wilson](#)  
**Subject:** [external] Support for Howard Dog Park  
**Date:** Thursday, March 25, 2021 1:53:03 PM

---

I am a writing to offer my support to the creation of a dog park in Howard park.

Sincerely

A. Lewin-Waldman  
2841 Birchwood Ave Wilmette

Sent from my Verizon, Samsung Galaxy smartphone

**From:** [Todd Shissler](#)  
**To:** [Steve Wilson](#)  
**Subject:** Fwd: [external] Dog Park support - sort of...  
**Date:** Thursday, March 25, 2021 1:42:06 PM

---

Please forward and respond

Sent from my iPhone

Begin forwarded message:

**From:** Marianne Zielinski <marianne\_z@hotmail.com>  
**Date:** March 25, 2021 at 2:39:01 PM EDT  
**To:** Todd Shissler <tshissler@wilpark.org>  
**Subject:** [external] Dog Park support - sort of...

Christine Balzano posted in NextDoor Wilmette asking for support of a dog park, potentially to be located in Howard Park. She included your email to ask for support. I fully support a dog park, but wouldn't it be more prudent to fence-in an already established, underused dog park at West Park? PLENTY of space! Could be easily divided into sections for large and small dogs (a topic of discussion regarding the Dog Beach on NextDoor) Parking availability, and a nearby PET DRINKING FOUNTAIN! You can't get much better than that!

I am in support of fencing in the West Park Dog Park!

Thank you.

Marianne Zielinski  
518 Hibbard Rd.  
Wilmette

**From:** [Krista Connelly Mayer](#)  
**To:** [Steve Wilson](#)  
**Subject:** [external] Howard proposed dog park  
**Date:** Thursday, March 25, 2021 1:41:19 PM

---

Steve,

I am writing in regards to the proposed dog park at Howard Park in Wilmette. As a nearby homeowner, I vehemently oppose the plan to put a dog park at Howard Park.

We have young kids in elementary school who frequent the park for soccer and baseball games. They also attend adult softball games and have a great time playing with their friends in the park.

There are children who are afraid of dogs, in particular, one of my children. If they knew there was a dog park there with numerous dogs in the area they would not want to go to the park.

Having mass amounts of dogs flocking to the park because it is now designated a "dog park" would destroy the park and quiet neighborhood.

The nearby residences would have to deal with excess foot traffic, car traffic, pollution, and noise associated with having numerous dogs at the park at one time.

The Wilmette village has many beautiful open grassy areas and sidewalks where you can take your dogs for walks.

We also already have designated dog parks. I do not believe there is any reason to add an additional dog park to the community.

There are many ways to utilize these funds in order to enhance the Wilmette Community. One of which would be to finish the village streets and sidewalks so small businesses can have people sitting outside for lunches and dinners in order to recuperate money lost in the pandemic.

I hope you and the other committee members will reconsider this proposal as it would be a detriment to the community, home owners and the children that frequent the park.

Thank you,  
Krista Mayer, Wilmette Resident

**From:** [Todd Shissler](#)  
**To:** [Steve Wilson](#)  
**Subject:** Fwd: [external] Dog Park  
**Date:** Thursday, March 25, 2021 1:10:09 PM

---

I just received this. Please forward to the other commissioners and respond to the person who wrote

Sent from my iPhone

Begin forwarded message:

**From:** Katerina Budacsek <karobu@comcast.net>  
**Date:** March 25, 2021 at 2:08:43 PM EDT  
**To:** Todd Shissler <tshissler@wilpark.org>  
**Subject:** [external] Dog Park

Todd,  
I am writing in support of the dog park in Howard Park. My family has two dogs and we wholeheartedly support the opening of a fenced in dog park as soon as possible. The dog beach has been so crowded lately, with all the new puppies that families have gotten during the pandemic. And it was really unsafe this past winter with all the ice sheets. Our children have so many beautiful playgrounds to choose from in Wilmette and our four-legged friends need a play area too!

Thank you,  
Katerina Budacsek

**From:** [Alexa Burnell](#)  
**To:** [Steve Wilson](#); [Julia Goebel](#); [Todd Shissler](#); [Amy Wolfe](#); [Bryan Abbott](#); [Mike Murdock](#); [Cecilia Clarke](#); [Kristi Solberg](#); [Bryan Abbott](#)  
**Cc:** [Burnell, Dave](#)  
**Subject:** [external] NO To Dog Park At Howard  
**Date:** Thursday, March 25, 2021 12:20:34 PM

---

Dear Steve and Board Members,

We just heard that the Park District is considering integrating a dog park at Howard Park. As residents of Spencer Avenue, we are strongly opposed!

I was also disappointed to learn of this possibility through the rumor mill with no consideration for the neighbors who would be directly impacted by such a decision.

Please rethink this.

Alexa and Dave Burnell  
1618 Spencer Ave

**From:** [Angela O'Rourke](#)  
**To:** [Steve Wilson](#)  
**Subject:** [external] Dog Park at Howard Park will destroy that quiet Neighborhood- I got a solution though, not just an objection  
**Date:** Thursday, March 25, 2021 11:53:04 AM

---

Dear Mr. Wilson,  
as a resident who walks past Howard Park daily to bring my child to school and home I have seen many dog owners with their dogs off leash there. As I am not using the park walking by that does not bother me at all, the Parks are for everyone.

What I do not understand, why are you taking away from a Park that already has a designated use like Howard. For Football, we play our family turkey bowl there every year for 48 years now.... my children (3 and 10) love climbing the trees which are all in the area you plan to create a fenced enclosure for animals. And add parking, why? There are 3 parking lots around Howard park, The Police department and village office ones, the Howard Park ones, the alley along Howard Park and St. Joseph's rectory.

Constructing this Dog Park will do the following:

- destroy the quiet of that neighborhood, car traffic will increase tremendously
- Taxpayer money drain. City of Chicago Dog parks Parks are initially not funded by the taxpayers, but by the residents who want them via a 501 3 (c) here's more information on that: <https://humboldtparkdogpark.org/donate/>
- take away a greenspace for kids to play, our families activities there are we sled there in winter, climb trees there year round, pick dandelions in summer and play football in fall.
- I understand that the parents of McKenzie who walk their kids to school with the dogs each morning want a convenient place for their dogs to meet after school drop-off and not get into their cars and drive West or East. But minimizing an already small park for the benefit of a few seems not very community oriented.

As Wilmette already has 2 Dog Parks, seems a little over the top to add another. This is not a big town. We have a dog beach that's huge on the east end and you have a dog Park at West Park. But if you really want to add one, here is another suggestion Vattman, It is small like Howard and does not get used a lot on the North side along Lake Avenue due to traffic noise and our fear kids could run in to the street while playing( no ball games no picnics, Nothing happens there EVER except Tyrone the traffic guard who comes twice a day and to help our kids home. Why not put it along Lake Avenue there? The dogs will bark and still be happy they don't care, McKenzie Parents and even St. Joseph's and St. Francis parents could all conveniently walk there. There's already lots of traffic there so you would not need to destroying a quiet street/neighborhood.

Thank you for reading my objection, have a beautiful day and spring break!

Kind Regards,  
Angela Walther O'Rourke  
1710 Walnut Avenue  
Wilmette, IL 60091  
(224)216-7021

**From:** [challinor@aol.com](mailto:challinor@aol.com)  
**To:** [Steve Wilson](#); [Gordon Anderson](#); [Julia Goebel](#); [Todd Shissler](#); [Amy Wolfe](#); [Bryan Abbott](#); [Mike Murdock](#); [Cecilia Clarke](#); [Kristi Solberg](#)  
**Subject:** [external] Howard Dog Park -- support  
**Date:** Thursday, March 25, 2021 11:51:26 AM

---

Park District:

I saw some information recently about the potential addition of a dog park at Howard Park and would like to express my strong support.

We have lived at 1637 Spencer, across the street from Howard Park for 15 years, so we would be one of the residents most directly-affected by the plan. We can look directly into the park from our windows and have always enjoyed seeing dogs romp and play together. The proposed plan codifies what has been an ongoing, informal gathering place for dog owners for many years and it creates a safer and more secure environment for the dogs and owners, and would reduce potential disruptions and inconvenience to others using the park. The area designated for the dog section is a rarely-used section of the park and would not interfere with current use of the park.

The Howard Park location is easier to access than the current dog park at the beach, and would provide better access to those Wilmette residents that live farther away from the lakefront.

The only concern I have is the additional parking being added, but I am confident that a compromise can be reached on this. Perhaps some additional parking could be added along the service road at the north side of the park to avoid further parking and congestion on 17th.

I am sure that there are critics of any changes to the park, and the critics are often more vociferous and motivated to speak out, but I believe the majority of residents in the area are supportive of the general plan--even if they do not feel motivated enough to speak out.

Mark Challinor  
1637 Spencer



**From:** [Gail Bernero](#)  
**To:** [Steve Wilson](#)  
**Subject:** [external] Howard Dog Park Support  
**Date:** Thursday, March 25, 2021 11:42:13 AM

---

Dear Mr. Wilson,

I live 1756 Washington and my back window faces Howard Park. There are dogs running off leash all day, every day as it is already an unofficial (if illegal) dog park. I totally support the proposal of fencing in the east end for a dog park. People who don't want dogs running amuck will be happy the pups are fenced in and dog owners will be happy to have a safe place for their dogs to run. There is a large community of new and existing dog owners from around the village that would love Howard Dog Park. It doesn't need to be fancy, dogs are not picky, a simple fence would suffice. You don't even need to remove the parking lot. Also, I don't know where Keats got his statistics about the number of dogs but his numbers do not prove his point. 1. Many dogs have vets outside of Wilmette. 2. Many puppies have not had all their shots making it impossible to register for a beach pass. 3. Gillson is not enclosed, making dogs that are flight risks unsuitable for that park. There is also other issues for some at Gillson ie. The Lake 4. Who even knows to register their dogs? 5. On my side of the block alone, there are 5 NEW puppies this year including mine. So you can't tell me that there is t a huge increase in dogs.

Thank you for reading this and sharing it at your next meeting.

Gail Bernero

Sent from my iPhone

**From:** [Rachel Brown](#)  
**To:** [Steve Wilson](#)  
**Subject:** [external] Howard Park  
**Date:** Thursday, March 25, 2021 10:49:12 AM

---

Hi Steve,

My name is Rachel Brown and I am a resident of Wilmette on Gregory Ave. I often frequent Howard Park with my two young boys to run and play. It's a gorgeous open green space here in Wilmette and one many families can walk to. I am writing to share with you that I oppose this space having a dog park in it. Don't get me wrong, we own a dog and are dog lovers! But this is not the space for it in my opinion, as it is already a treasured open space many families go to to run around, play games and be active together. It's a safe, clean space for kids and families. The addition of a dog park here would increase traffic and dog waste. I kindly request that the addition of a dog park and it's location be reconsidered to a less family/child friendly location and away from such a beautiful neighborhood.

Thank you,

Rachel Brown

Sent from my iPhone

**From:** [Dorothea Boyle](#)  
**To:** [Steve Wilson](#)  
**Subject:** [external] I'm support of dog parks in Wilmette  
**Date:** Thursday, March 25, 2021 8:09:50 AM

---

Hi Mr Wilson,

I'm writing to you to express my **SUPPORT** for more dog parks in Wilmette. So many families got dogs during the pandemic and we need more spaces to have our dogs play. The beach park is great but very seasonal. The Howard Park idea is fantastic, as is the one proposed at Mallinckrodt. I'll be thrilled when West Park is fenced, which will hopefully be before the summer. I think Howard is a great location because it is centrally located, and many people will be able to walk their dogs there (so increased traffic shouldn't be a major consideration).

There is an ongoing discussion on the McKenzie parents Facebook page that is asking for McKenzie parents to email you **AGAINST** creating a dog park at Howard park. There seems to be lots of misinformation (hours of operation, diagonal parking spots along 17th, etc), as well as a statement that Mallinckrodt residents voted against the dog park in that park. I sincerely hope any people who email you against creating a dog park at Howard do some research before emailing you.

Thank you,

Dorothea Boyle

**From:** [Hotmail](#)  
**To:** [Steve Wilson](#)  
**Subject:** [external] Oppose Howard Dog Park  
**Date:** Thursday, March 25, 2021 7:34:18 AM

---

I strongly oppose the plan to put a dog park in Howard Park.

Derek Mayer  
1535 Walnut Ave

**From:** [David Kritzler](#)  
**To:** [Steve Wilson](#)  
**Cc:** [Peg Kritzler](#)  
**Subject:** [external] Kritzler family against dog park at Howard  
**Date:** Thursday, March 25, 2021 5:57:49 AM

---

Howard Park is not an appropriate location for a dog park. As a primary location for our children's activities, it would worsen sanitation. There are already significant drainage issues in the park without adding fecal matter to the standing surface water. It would worsen year round daily noise issues. It would worsen congestion in a residential neighborhood. It would reduce our communities limited space available for our children's activities. This space should not be reduced for the convenience of those who choose to own larger companion animals. It's not a sensible usage in Howard Park. David Kritzler 1733 Lake Ave.

**From:** [Melissa Mares Stambor](#)  
**To:** [Steve Wilson](#)  
**Subject:** [external] Dog park at howard  
**Date:** Thursday, March 25, 2021 5:43:47 AM

---

Dear Mr. Wilson,

We strongly oppose putting a dog park along 17th at Howard park. We use howard park frequently and live in the neighborhood, and we do not want to see the traffic and mess that comes with a dog park crammed into an already tight residential area. Please consider other spaces that aren't so residential, or let the existing dog park at the beach suffice.

Thank you,  
Melissa Mares Stambor

**From:** [Kimberly Alcantara](#)  
**To:** [Steve Wilson](#)  
**Cc:** [Gordon Anderson](#); [Julia Goebel](#); [Todd Shissler](#); [Amy Wolfe](#); [Bryan Abbott](#); [Mike Murdock](#); [Cecilia Clarke](#); [Kristi Solberg](#)  
**Subject:** [external] Dog Park-Howard Park  
**Date:** Thursday, March 25, 2021 12:34:48 AM

---

To Director Wilson, Board Members, and Staff,

I just heard disturbing news that the Park District is considering integration of a Dog Park at Howard Park. For almost 20 years, my family has lived three houses east of 17th Street on Spencer Avenue, which runs straight into Howard Park. As you know, Howard Park is bounded by residences and narrow, brick-lined streets. This is the wrong place for a designated dog park. Wilmette's current dog park is in Gilson Park on the lake, far away from residences — which is indeed the type of area where a dog park should be situated.

Problems with the proposed plans including the following (among others):

- A section of Howard Park will need to be fenced in and monitored, which will change the nature of the park itself.
- Vehicles will be parked 7 days/week, throughout the year, on residential blocks, which will invariably impact the character of the neighborhood and property values.
- Spencer Avenue is a narrow, brick-lined road dead-ending at 17th Street. There is no room for cars to be parked on Spencer Avenue on a daily basis (which would invariably come to pass), and adding diagonal parking on 17th St would increase traffic, noise and congestion in a highly residential area.
- The houses on 17th St, Spencer Avenue and Washington Avenue border Howard Park with virtually no “space-buffer”, and the increased noise (cars and barking), as well as the change in park use, would disturb neighbors who moved to this area with no intention of living next to a dog park.

I strongly oppose this plan. Even moreso, I am dismayed, disappointed and rather mystified as to why residents adjacent to Howard Park were not apprised of this drastic change in land use. I would have fully expected that a change of this type would have been (and should have been) presented by the Park District directly to Howard Park neighbors to solicit feedback and to hold hearing(s) for discussion about such a plan.

I look forward to hearing back to you. I am particularly interested in understanding why notices have not been provided to Howard Park neighbors on 17th St, Spencer Avenue and Washington Avenue.

Sincerely,

Kimberly Alcantara  
1626 Spencer Avenue  
Wilmette, IL 60091

**From:** [Jerilyn Smith](#)  
**To:** [Steve Wilson](#)  
**Subject:** [external] Against Howard Park dog park  
**Date:** Wednesday, March 24, 2021 10:06:51 PM

---

Hello,

I wanted to reach out and express my concern for the plans to convert part of Howard Park into a dog park. We live on Spencer Ave. which runs into Howard and love the small, quiet community we have. Living between 2 parks (Vattmann and Howard) is amazing but the conversion of Howard Park into a dog park would take away from the quaintness of our neighborhood. Traffic and street parking would also negatively effect us. Howard parks open space is not only used for the baseball fields but picnics, flying kites, a place for people to walk, run, sled, cross country ski and so much more and a dog park would extremely limit that. In light of this past year a park that has less "attractions" is more ideal and needs to be preserved. I would like other locations to be considered rather than Howard Park.

Thanks for your consideration.

Jerilyn Smith

Sent from my iPhone



**From:** [Josh Kritzler](#)  
**To:** [Steve Wilson](#)  
**Cc:** [Natalie Kritzler](#)  
**Subject:** [external] Howard Park Neighbor  
**Date:** Wednesday, March 24, 2021 9:54:47 PM  
**Attachments:** [image001.png](#)

---

Hello Steve,

I grew up at 1733 Lake ave backing up to Howard Park. My parents still reside there and we were fortunate enough to be able to subdivide the land and build a home next to theirs which is now 1735 Lake Ave. My wife Natalie and I saw Sarah Traficano's post on Next Door about potentially putting a dog park on the east side of Howard Park running along 17<sup>th</sup> street. This is objectively a bad idea and we are adamantly apposed to this plan. Sarah makes excellent points that the drainage west to east on Howard is horrible as we can attest and if anyone doesn't clean up after their dog it would create incredible environmental issues.

The added parking and eye soar that it would create for all for the neighbors from a front yard viewing area would likely harm property values and create additional traffic density that is unwelcome as it is also a thoroughfare for a significant amount of kids who use that as a route to McKenzie.

In general we hope that if Wilmette is looking for a place to add a dog park they look elsewhere but if that is the only available location the only area that makes sense is the far southwest side of the park nearest the police station. Existing parking, better drainage and no front yard eyesores.

As for us, we do not have significant tree coverage from our backyard so a significant amount of additional people staring into our backyard when we have young grade school age children is not ideal.

Please put us on the record and neighbors who appose the dog park in general but feel if it must go in Howard Park the only viable location is the farthest southwest corner nearest the police station.

Regards,

Josh and Natalie Kritzler  
1735 Lake Ave



**JOSH KRITZLER**

**Partner & Co-Founder**

O: 312.948.0255

C: 773.791.9244

[Josh@Team4FRONT.com](mailto:Josh@Team4FRONT.com)

640 N. LaSalle St. Suite 265, Chicago, IL 60654

[Team4FRONT.com](http://Team4FRONT.com) • [Twitter](#) • [Facebook](#) • [LinkedIn](#)



**From:** [Jason Bristol](#)  
**To:** [Steve Wilson](#)  
**Subject:** [external] Support for dog park at Howard park  
**Date:** Wednesday, March 24, 2021 9:49:02 PM

---

Hello Steve

I am writing to express support for the proposed dog park at Howard Park. I live in the neighborhood and we could really use a fenced in area where dogs could run. The east side of Howard park seems like a logical location.

Thank you  
Jason Bristol  
[1504 Highland Ave](#) Wilmette

Sent from my iPhone

**From:** [JOS PECHTL](#)  
**To:** [Steve Wilson](#); [walter@keats4parks.org](mailto:walter@keats4parks.org)  
**Subject:** [external] Opposed to a dog park in Howard Park  
**Date:** Wednesday, March 24, 2021 4:51:02 PM

---

Mr Wilson.

My husband and I have been residents of Wilmette since 1959. We have lived in the same house at 833 17th street for this entire time. We are right next to Howard Park. You might not know it, but there used to be a nice school there. We do not want to see a dog park put into our neighborhood. This will destroy the appeal of the neighborhood. We do not want to see the muddy mess that a small dog park will surely cause. The grass will not grow in that small a space with dogs running exclusively in there. The water always accumulates there, and it will look terrible. We are planning to vote against anybody that votes for this terrible idea. We are also dog owners and it is doubly a bad idea. The diagonal parking on the street idea is also terrible. It is dangerous on the street already and you will make it worse.

Irene Pechtl  
Joe Pechtl

**From:** [Valli Stewart](#)  
**To:** [Steve Wilson](#)  
**Subject:** [external] Dog park  
**Date:** Wednesday, March 24, 2021 12:59:09 PM

---

Hello

We live on Washington Avenue and see Howard Park from our back window.

If it is determined that we need an additional dog park in Wilmette, then we certainly favor the location closer to the police station.

Fencing in the area along 17th street will be unsightly and have the dogs in closer proximity to people walking on the side walk.

Thank you,

Valli Stewart

**From:** [Mitch](#)  
**To:** [Steve Wilson](#)  
**Subject:** [external] Dog Park in Howard Park  
**Date:** Wednesday, March 24, 2021 12:38:08 PM

---

Dear Mr. Wilson,

I live at 1750 Washington Avenue (on Howard Park) and I vehemently oppose a dog park here. We will already have 2 dog parks and the Howard Park land is meant and needed for sports. We cannot afford 1.5 acres to be sectioned off for a dog park.

Please reconsider this decision.

Regards,

Mitch Gousd

Sent from my iPhone

**From:** [Sarah Traficanto](#)  
**To:** [Steve Wilson](#); [Amy Wolfe](#)  
**Subject:** [external] Howard Park Dog Park - AGAINST for the following reasons  
**Date:** Tuesday, March 23, 2021 10:01:04 PM

---

Hello,

I live at 826 17th St in Wilmette, across from Howard Park. I just heard about the proposed dog park to be added to Howard park and I am extremely upset for the following reasons:

- We bought our house purposely for the location across from Howard Park. We like the quiet, the open spaces. We like walking across the street to play with our kids in the natural space.
- That part of the park has terrible drainage. Adding a dog park will essentially create a constant mud pit year round. I can't imagine even the dog owners will want to use a dog park that leaves their animals muddy messes... and we certainly don't want that damage done to the ground and surrounding areas.
- Parking is already a challenge on our street. We use the space across the street to drop off / pick up for quick access to the house with groceries, etc. With the addition of slanted parking and the dogs, this will bring unwanted traffic and cars constantly parked across the street. It will also make the street more narrow and unsafe for our kids.
- This will decrease our property value, no doubt. Will the parks be compensating us for that?? Who will want to live across from this situation? It's dangerous, dirty and disruptive to our peaceful street.

I thought the mission of the Wilmette Park Board was to protect the beauty of our parks and open spaces. This does not live up to that commitment. Please advise on how I can continue this conversation. Our family has been long time supporters of the park district and this news comes as a huge disappointment.

Sarah Traficanto

--

Sarah Traficanto  
[stafford.sarah@gmail.com](mailto:stafford.sarah@gmail.com)

**From:** [Andrew Traficanto](#)  
**To:** [Steve Wilson](#)  
**Subject:** [external] "Dog Park" in Howard Park  
**Date:** Tuesday, March 23, 2021 9:14:13 PM

---

Mr. Wilson,

I live on 17th Street directly across from Howard Park. I am opposed to a "Dog Park" in Howard Park.

We would actually like to see NO dogs allowed at Howard Park. I don't know if dogs are currently allowed to run free (off leash) at Howard Park, but that is what happens constantly. My office overlooks the park. In fact, our house is directly across the street from the proposed dog park area.

I heard one argument in favor of the Howard Park Dog Park is that there are more dogs due to Covid. Well, Covid may also be used to explain the fact that there are more children in the parks due to Covid. My children and I frequent the proposed dog park area of Howard Park. This has increased greatly with Covid. It's a nice break to run around the field with my children (8 & 6)...and play catch, frisbee, simply run, etc. I would think the dogs can go elsewhere, to any number of the dog parks in our surrounding suburbs. We chose our home on 17th Street in Wilmette due to its close proximity to Howard Park, as our children love to play there.

It's great that Wilmette is looking for a third nearby dog park for dogs to legally run off leash, but let's locate this area in a park that isn't so frequented by children/people.

I hope this email gets some attention. I realize dogs are important, as resident taxpayers have dogs, but I hope the voice of a resident taxpayer without a dog gets heard.

Please let me know if I can do anything else to voice my opposition to the dog park in Howard Park...or if it's too late.

Sincerely,  
Andy Traficanto



**From:** [Leta Strube](#)  
**To:** [walter@keats4parks.org](mailto:walter@keats4parks.org)  
**Cc:** [Steve Wilson](#)  
**Subject:** [external] Howard Park  
**Date:** Tuesday, March 23, 2021 8:46:33 PM

---

Dear Mr. Keats-

I received your flyer re: Howard Park today and wanted to drop a quick note to let you know that open lands are not of top priority to all Wilmette residents. I do not currently own a dog but I am in favor of an additional dog park at Howard which, in my opinion, is an under utilized piece of land. As is the land north of Centennial which, in my opinion, is an unsightly plot of "open land" that could be used in other ways to greater benefit Wilmette residents (Each time I pass it on my way to the Glenview Park Center to use their indoor swimming facility, and fitness center I am angered by what could have been built at Centennial. I regularly travel to Glenview to use their pool and work out facility for *considerably* less cost than a membership to the Wilmette fitness center which does not have an indoor pool, is less well equipped and open shorter hours. How do we justify this?) .

Bottom line, I do not agree with your position against a Howard Park dog park.

Sincerely,  
Leta Strube  
1772 Washington Ave.

**From:** [Liza Madden](#)  
**To:** [Steve Wilson](#)  
**Subject:** [external] Howard Park dog park.  
**Date:** Tuesday, March 23, 2021 5:12:13 PM

---

I live in howard Park and I am completely in favor of adding a dog park here. Thank you,

Liza Madden  
1730 Washington Ave, Wilmette, IL 60091

**From:** [Anna Furmanov](#)  
**To:** [Steve Wilson](#)  
**Cc:** [walter@keats4parks.org](mailto:walter@keats4parks.org)  
**Subject:** [external] against the dog park  
**Date:** Tuesday, March 23, 2021 2:00:44 PM

---

Hi Mr. Wilson,

I'm not sure who is behind this, but we are very much against putting a dog park in Howard Park. Can you imagine the traffic, noise, poop, ugly fencing, etc?? No. No way.

I'm not sure if this is your idea or Mr. Keats, but it's a poor idea on so many levels.

Best,  
Anna

**From:** [Suzanne Kilner](#)  
**To:** [Steve Wilson](#)  
**Subject:** [external] Concerns re Howard dog park  
**Date:** Tuesday, March 23, 2021 1:22:31 PM

---

I have lived in Wilmette most of my life. I just learned of the proposal to make part of Howard Park an official dog park. I live just one house away from the park on Spencer Ave. I frequently walk through the park to the stores on Ridge. My children grew up playing in the park and I see neighborhood kids going there any time weather permits after school to throw a ball or kick a ball. On weekends I watch Dads from the neighborhood walk with their kids to practice a sport. Other weekend days we walk over and watch the park district games. Kids always stop and play at the memorial "tower" of Howard Junior High. Kids ride bikes in the parking lot, rollerblade, and skateboard on the pavement. Now I take my grandchildren there to play.

A few years ago a group of parents started taking their dogs there and letting them run off-leash. They were good about cleaning up afterward. There was an 8 am group and a 9 am group. The attendance seems to have dropped off with the pandemic, but some regulars still go. By 10 am the park was free for the rest of us to walk and for kids to play, etc. Because my son fears dogs, he refuses to step into the park until the dogs are gone.

My son with special needs is very afraid of dogs. He will not go into Howard Park now during the morning hours. If you build a fence, there will be dogs all day long and people will drive with their dogs to the dog park. The number of dogs and the barking will increase.

One of the proposals shows a huge dog park running the entire length of 17th street. People who are afraid of dogs would then have to walk past the dogs to access the rest of the park. That will effectively mean we cannot use the park any longer. **We strongly oppose this design.** Please make the dog area much smaller and off in a corner so we don't have to pass near it and can still use the park.

Dog owners often forget that not everyone shares their love of dogs and that many children and some adults fear dogs, especially when off-leash

.  
Suzanne Kilner  
Suzanne Kilner

[suzanne.kilner@gmail.com](mailto:suzanne.kilner@gmail.com)

**From:** [Nilofer Umar](#)  
**To:** [Steve Wilson](#); [Ali Akbar](#)  
**Subject:** [external] Concerns regarding proposed dog park in Howard Park  
**Date:** Tuesday, March 23, 2021 12:06:50 PM

---

Dear Mr. Wilson,

I am a resident of Wilmette at 834 17th Street and I am writing to share significant concerns regarding the most recent dog park proposal for Howard Park. Not only does the most recent proposal contemplate taking away a significant amount of open space within Howard Park when there is no demonstrated need for the park, but the proposal to eliminate the current parking lot makes absolutely no sense given that when sports events or practices are scheduled on the field, the current parking lot already is overflowing. There is not sufficient space on 17th Street to accommodate angled street parking, and this proposal will result in significant traffic overflow (and traffic backup due to cars attempting to back into) into neighboring residential areas, creating danger in an area where many residents, including myself, have young children. Additionally, having a dog park where dogs may be off leash immediately adjacent to the sidewalk creates additional safety concerns for the children and adults who use that sidewalk regularly.

I would be happy to discuss these matters and hope that the concerns of residents in the neighboring area will be taken into account.

Best regards,

Nilofer Umar

**From:** [Alexander Kogan](#)  
**To:** [Steve Wilson](#)  
**Subject:** [external] Opposition to Howard Park Dog Park  
**Date:** Tuesday, March 23, 2021 12:02:18 PM

---

Attn Steve Wilson:

I am a dog owner and user of Howard Park and I am opposed to the dog park plan. I am not part of the morning crew, but I do meet other dog owners there at other times in the day. Every dog owner I know who uses this park 100% of the time picks up their dog's feces and deposits it appropriately. We also respect other dog owners and non-dog people's needs by putting our dogs on leash if requested or just in general if someone we don't know gets anywhere near us. We also do not frequent the park when games are starting or large numbers of people are there.

Obviously every owner who lets their dog off leash is breaking the law and we understand that ticketing is a risk. But to me, this is a situation where if everyone is respectful and careful, it's a better experience as is. Wilmette has a small town feel and the current situation is part of that.

Dog parks, while good in intention, are actually worse for the dogs and dog owners. The walls create an enclosed environment which results in the dogs feeling threatened and acting more aggressively. Dog park users are also less likely to clean up their dog's feces and most commonly the surfaces are either astroturf or gravel, which are both bad play surfaces and quickly become unsanitary. They also cost the taxpayers money and take up valuable space in the park, all needlessly in my opinion. I also think the noise will be far worse when the dogs are enclosed in a smaller area and will lead to complaints from people who live next to the park.

Thank you for hearing my opinion on this matter.

Alex Kogan

**From:** [Carole Johnson](#)  
**To:** [Steve Wilson](#)  
**Subject:** [external] Concern Over Dog Park  
**Date:** Tuesday, March 23, 2021 8:47:29 AM

---

Hello Mr. Steve Wilson -

I am writing to voice my concern over the proposed dog park at Howard Park. As a resident that lives across from Howard Park and owns a dog this the absolute last change I would want. The park is a great place for kids of all ages to run, play, fly kites, hang out. A dog park would deter people from playing there. Along with the inevitable dog feces accumulation.

Happy to speak further if you need. Just wanted you to hear the voice of a concerned village resident and someone that lives directly across from Howard Park on 17th Street.

Thanks,  
Carole Johnson

**From:** [Mari Nakajima](#)  
**To:** [Steve Wilson](#)  
**Subject:** [external] Not Howard Park as a dog park  
**Date:** Monday, March 22, 2021 8:00:31 PM

---

Dear Mr. Wilson,

I understand that at the March 15 meeting, an updated dog park at Howard Park was proposed to stretch along 17th Street. As a resident close to Howard Park, this proposal isn't ideal but far too dangerous for people and dogs alike.

Let me tell you the current situation.

Even without a dog park, during the baseball, football, and softball season, because of limited parking spaces at the park, cars that cannot park at Howard Park are overflowed to jam pack 17th Street, Spencer Avenue, Washington Avenue, causing a total hazard and havoc. If the proposed dog park compensates the existing parking lot for its space, it will create an even more dangerous environment. Also, a dog park close to a street is simply not safe for dogs, even if it's fenced.

On the other hand, according to a local news report, Mallinckrodt Park is also considered for a dog park. In my opinion, it would be a much better and safer location.

Please do not proceed with Howard Park as a dog park. Rather I urge you to make the West Park dog play area more secure with fencing, and if absolutely necessary to create a third dog park, consider Mallinckrodt Park instead.

Thank you,

Mari Nakajima  
1635 Spencer Avenue  
Wilmette, IL 60091  
[nakajimari@gmail.com](mailto:nakajimari@gmail.com)



**From:** [Greg Baumeier \(MIT IL\)](#)  
**To:** [Steve Wilson](#)  
**Cc:** [Bonnie Baumeier](#)  
**Subject:** [external] Dog Park  
**Date:** Monday, March 22, 2021 6:20:45 PM

---

Mr. Wilson,

I live across from Howard Park on 17<sup>th</sup> Street. My wife and I will vote a hard **NO** to adding the dog park, and we own two dogs. The proposed area is a swamp when it rains, and often there is a small pond which forms do to the grade of the park, and an ice rink when it freezes. I am guessing no one considered this as they likely don't know about it. Only if you are a frequent visitor to the park, bring dogs to the park, or live across from the park would you know about it. That area is a dumpster fire! You also have a huge parking problem during the sports season (Spring through Fall), as 17<sup>th</sup> street and surrounding streets are jammed with cars. Losing the parking area will force more cars onto the streets. And by the way, there is NO parking on the East side of 17<sup>th</sup> street, further exacerbating the limited parking.

Like many other dog owners in our neighborhood, we enjoy bringing the dogs across the street to run freely, and yes, always off leash! We have never had an issue with this practice, especially in the Winter, early mornings, during the day, and other times when there are very few people at the park and most often no one at the park. We see zero reason to spend our tax dollars on a dog park when there is plenty of infrastructure repair around town which is more of a priority, like our alley, which is a disaster and desperately requires a complete regrading and resurfacing to fix it.

In summary, a very bad idea, leave the park as is!

Greg

***Greg Baumeier /Director, Sales/Meridian IT Inc.***  
***Nine Parkway North, Suite 500 | Deerfield, IL 60015***  
***Office: 847.964.2825 | Mobile: 847.707.2388 | eFax: 847.444.0151***  
***[greg.baumeier@meridianitinc.com](mailto:greg.baumeier@meridianitinc.com) | <http://www.meridianitinc.com>***

We are continuously updating [meridianitinc.com](http://www.meridianitinc.com) with the latest mobile workforce and security considerations as we face this COVID-19 pandemic together. Click on the hyperlink below and visit daily to learn more about what Meridian is doing to help our clients during this difficult time.

LINK: <https://www.meridianitinc.com/covid-19>

**DISCLAIMER:**

This communication is intended only for the use of the addressee and may contain legally privileged and confidential information. If you are not the intended recipient, you are hereby notified that any dissemination, distribution or copying of any information contained in or attached to this communication is strictly prohibited. If you have received this message in error, please notify the sender immediately and delete the material from any computer. Your receipt of this message is not intended to waive any applicable privilege. Any tax advice contained in this email was not intended to be used, and cannot be used, by you (or any other taxpayer) to avoid penalties under the Internal Revenue Code of 1986, as amended.



**From:** [WENDY RAYMOND](#)  
**To:** [Steve Wilson](#)  
**Subject:** [external] Dog Parks in Wilmette  
**Date:** Monday, March 22, 2021 6:19:28 PM

---

Dear Steve,

I received a flyer in the mail today about the planned dog parks in Wilmette. I live on Howard Park - 1706 Washington Avenue. I absolutely love the idea of a fenced in dog park at Howard Park and know we are in desperate need of such a fenced in yard for our 4-legged friends to play in without annoying our neighbors.

Thank you for your participation in making this a reality. I and my family appreciate all you've done to make this a reality.

Sincerely,

Wendy Raymond

**From:** [joe prangl](#)  
**To:** [Steve Wilson](#)  
**Subject:** [external] Opposed to Howard Park Dog Park  
**Date:** Monday, March 22, 2021 4:31:12 PM

---

I've lived at 720 17th street for over twenty years and am strongly opposed to the Dog Park proposal at Howard Park.

Over the past few years we've seen a significant increase in dog walking traffic on our street and along with that increase I have also seen a rise in the amount of dog waste in my front yard, dogs off leash in my yard and one attack of my own dog in my own yard.

Is there a plan to enforce the leash law and owners cleaning up after their pets?

In addition, Howard Park is ankle deep in rainwater most of the Spring and Fall. I honestly cannot imagine how Howard Park would not become a swamp with constant and concentrated traffic.

More mess, more traffic, more off leash dogs. I cannot support.

Sent from my iPhone

**From:** [Laura Hemmer](#)  
**To:** [Maplepark Playground](#)  
**Cc:** [Laura Hemmer](#); [Micah Hemmer](#); [Gordon Anderson](#); [Bryan Abbott](#); [Cecilia Clarke](#); [Mike Murdock](#); [Todd Shissler](#); [Amy Wolfe](#); [Julia Goebel](#); [Kristi Solberg](#); [Steve Wilson](#)  
**Subject:** [external] Maple Park Playground "Renovation" Project  
**Date:** Sunday, March 21, 2021 9:36:07 AM

---

Dear Wilmette Park District Leaders:

This letter is a follow-up to my 9/29/2019 and 10/1/2019 email communications to the Park District regarding proposed renovations for Maple Park. It appears the Park District is unfortunately returning to this effort now, so I am reiterating our concerns.

Maple Park is a special place, with appeal for all ages. It is attractive during all four seasons with a wide variety of nicely spaced trees and plants. Activity options are in place for very young children through adulthood. The junior playground includes the train, swings, rocker seats, and sand for younger kids, and there are two larger playgrounds for older kids. Since the playground options are all rather unique and not duplicated with similar design elsewhere in the area, Maple Park offers new and enticing play options for Wilmette children. For everyone, the wide-open area is perfect for throwing a frisbee, impromptu neighborhood kid football games, soccer drills and practices, etc. The basketball area and tennis courts are used regularly by residents, including us, too. These are all in the setting of nearby benches and shade when desired. From the numerous cars often parked next to the park loading kids in-and-out, it is clear Wilmette residents seek out this park, and it is utilized not only by residents residing immediately nearby.

We live immediately across from Maple Park (402 Maple Avenue), and, since we have lived next to Maple Park for over 6 years, I would deem my children, ages 11 and 8 years old, to be Maple Park experts. Their reaction to hearing about proposed changes to the park is that it is perfect and does not need much modification. Indeed, I often notice the good care the Village and Park District dedicate to this popular park. There seems to be routine lawn and tree care, cleaning and inspection of the playground equipment, replacement of the sand around the play structures, and shoveling of the walks during the winter.

We appreciate the excellent maintenance this park has received, and, as such, little change is needed.

It is our fear that Maple Park's "renovation", will reduce Maple Park to a plain, regular, boring park. This is a real problem, as has even been highlighted in a recent New York Times article ("Making Playgrounds a Little More Dangerous", May 10, 2019). The more modern playgrounds are smooth plastic and metal components that give a very controlled and organized environment. As noted in the New York Times article, the non-profit playground research and design organization Studio Ludo found that playgrounds in Europe, with seemingly more hazardous design elements, made children be more physically active and stay longer at the park than the more sanitized American playgrounds. There were even fewer injuries on the more seemingly hazardous playgrounds. Children on American "safe" and "accessible" playgrounds become bored and then perform dangerous maneuvers. Indeed, on multiple occasions, I have witnessed and had to ask elementary age children unknown to me to get down from standing fully up and balancing on the top of monkey bars or performing similarly truly dangerous activities at more modern Wilmette Parks. These truly dangerous activities could result in life-long disastrous health consequences. The Executive Summary of the above study states, "The U.S. seems to have reached "peak safety." **We have created a nation of overly expensive, homogenously safe, and insidiously boring play spaces."**

Please pay attention to current research and do not turn Maple Park into yet another redundant safe and accessible park. The Atlantic Magazine even covered this issue at least as far back as February 2012, with a clear title of "New Playgrounds Are Safe—and That's Why Nobody Uses Them." A 2015 systematic review using the highly regarded GRADE framework for study quality found crucial positive effects of appropriate risky outdoor play on both physical health and social development. (*Int J Environ Res Public Health*. 2015;12(6):6423-54.) Similarly, the sand should remain as the surface for the playground equipment. I fear a change to the too common rubber surfacing which has a "...relatively high cost, limited play affordance, and increased risk of fractures..." (*J Appl Biomech*. 2013;29:628-33).

Some of the extra-special features of the existing playground equipment that should absolutely not be disturbed include the following described below.

- A location on the smaller playground equipment to intentionally drop sand and small toys through which works for excellent make-believe play for younger kids to pretending “kitchen”, “scientist”, or other “work”.

- The wide swings with 4 chains that we have never found elsewhere. We call them “sit-down-stand-up swings”, and they are an extra fun and easy way to swing for younger kids who can’t pump their legs yet and, since they are unique, they are still fun for older kids too. As an adult, I notice these swings require some arm and core muscles not utilized by regular swings, so regular use also facilitates good exercise for kids.

- An extra-wide and not too steep slide (on the main wooden play structure) accommodates a round sled for sledding down on days that are not snowy enough for a real sledding hill or when time is too short to allow for a car trip to a sledding hill. Maple Parks “sledding slide” is just right!

- The circular path including the pretty bridge is ideal for independence for younger walkers or older kids who have recently learned to bike and scooter ride. They can experience satisfaction navigating the park safely on their own, which offers a wonderful freedom for them at that age! Adults even seem to detour through the park to walk over the picturesque bridge. The rocks down the sides near the bridge add good interest for kids too.

- A myriad of “nooks and crannies” exist on the large wooden play structure. We have found these perfect for hiding a ball or other item to play a “troll game”. We have discovered regular newer playgrounds, such as Langdon Park’s new structure, do not work for games such as this nearly as well because they are missing the “nooks and crannies”.

- The farther away playground area at Maple Park (near the tennis courts) offers older kids a safe freedom from both parents and younger siblings who are on the other playground.

If modifications must be undertaken at Maple Park, enhancements could include extension of the park into some of the adjacent and under-utilized CTA parking spaces. With additional space, a full basketball court and additional tennis courts could be added (the current one tennis court, especially now that it has been nicely redone, is often in use). The current basketball area could

benefit from resurfacing and a variety of basketball net heights for different ages. Obviously, the swings must be returned that were inexplicably removed suddenly. My children would also appreciate some monkey bars. If further work must be taken, replacement of the current playground structures could be replaced by identical new structures (for a **fiscal and environmental waste** exercise, since these are fine as they are with simple attention to more upkeep in some portions.

Thank you, in advance, for your attention to this letter and for protecting Maple Park as a popular Village resource for the health and wellness of residents of all ages. Please do not hesitate to contact me if you would like additional information. I will try to attend the meeting regarding the park set for 6:00pm pm on April 7th, but it is difficult to arrive home from work by that early time and with minimal notice. This issue takes on added importance since the irreparable harm children have suffered during the pandemic as their education, social development, and physical activity have all been irrationally over-restricted as school and government officials have refused to follow the science and the advice of basically all unbiased expert organizations dedicated to children's' health and well-being. Please do not allow our children to suffer yet another insult by ruining Maple Park.

Sincerely and on behalf of our whole family,

Laura Hemmer, M.D., FASA  
402 Maple Avenue,  
Wilmette, IL 60091  
(224)408-2411



**From:** [shoremedia@aol.com](mailto:shoremedia@aol.com)  
**To:** [Steve Wilson](#); [Ben Wozney](#)  
**Subject:** [external] Separate hours or separate areas on dog beach  
**Date:** Monday, March 15, 2021 9:34:48 PM

---

Per Ken Obel's suggestion, I would be very interested in the Park District considering either having hours on the Dog Beach for smaller dogs, under 20 or 25 lbs, or sectioning off a portion of the Dog Beach for smaller dogs like some other dog parks do.

Is this something you could consider? According to response on Nextdoor, it looks like there would be a lot of interest.

Thank you so much!

All the best,

Lynne Abbott

Wilmette Resident

**From:** [Holly Buckley](#)  
**To:** [Steve Wilson](#)  
**Subject:** [external] Lap swim  
**Date:** Monday, March 15, 2021 9:27:51 PM

---

As the board considers the format for pool reservations for 2021, I would like to vocalize my support for scheduling slots for lap swim. Aside from the pandemic (which will hopefully be significantly mitigated by swim season), it provides certainty as to availability whereas having no reservations means that a patron could arrive and there is not really space to accommodate each swimmer. Even if payment is accomplished through a season pass, retaining the reservation system would be welcome!

Sent from my iPhone

**From:** [Heather Chamberlain](#)  
**To:** [Steve Wilson](#); [Ben Wozney](#)  
**Subject:** [external] Small dog park at Gilson Beach  
**Date:** Monday, March 15, 2021 3:40:52 PM

---

I would support restricting a few hours a few days a week to just small dogs. I have a 13lb terrier who would enjoy the beach - and surrounding park - but may not react well when surrounded by much larger dogs.

Thank you for considering.

Heather Chamberlain

Resident of Kenilworth but open to buying a pass to the dog beach if this were to go through

**From:** [Kenneth Obel](#)  
**To:** [Steve Wilson](#)  
**Cc:** [Holly Specht](#)  
**Subject:** Re: [external] Re: Suggestion for small dog-only beach run hours  
**Date:** Sunday, March 14, 2021 11:44:12 AM

---

Steve, Holly –

I am following up on this note I sent some time ago regarding "small dog hours" at the Gillson Park dog beach.

I continue to feel – as do many small dog owners I chat with about this idea – that some time at Gillson and/or elsewhere in the Wilmette parks set aside exclusively for small dogs would be very useful and much welcomed. Your last email suggested that this idea should be given as input to the Gillson Comprehensive Plan. It looks like the first public meeting for the plan was on Feb. 18, which I regret that I missed. Hopefully, there will be other opportunities for feedback and I will suggest this. I imagine, though, that the process is still going to take a considerable amount of time to complete.

I would like to advocate that in the meantime, with the nice weather upon us, the staff could reasonably and easily "pilot" this idea at the Gillson dog beach, in which a few hours on the weekend would be set aside exclusively for use by small dogs and their owners. I am certain that if publicized (I would certainly help get the word out), it would be successful. This would provide data for the Comprehensive Plan – which I think would be better than suggesting this idea abstractly.

Couldn't this be set up quite easily? Will you consider it?

With appreciation,

Ken Obel

On Mon, Oct 7, 2019 at 9:29 AM Steve Wilson <[swilson@wilpark.org](mailto:swilson@wilpark.org)> wrote:

Starting tonight, and likely across a couple more meetings over the next month, the Committee will be selecting companies to work with. Then, a schedule will be created for meetings and I will let you know what that is when we solidify it.

Thanks.

Steve Wilson

Executive Director

Wilmette Park District

847-256-9617

[swilson@wilpark.org](mailto:swilson@wilpark.org)

**From:** Kenneth Obel <[kenneth.obel@gmail.com](mailto:kenneth.obel@gmail.com)>

**Sent:** Monday, October 7, 2019 9:28 AM

**To:** Steve Wilson <[swilson@wilpark.org](mailto:swilson@wilpark.org)>

**Cc:** Holly Specht <[hspecht@wilpark.org](mailto:hspecht@wilpark.org)>

**Subject:** Re: [external] Re: Suggestion for small dog-only beach run hours

Okay, Steve. I'd like to. Can you share information about future meetings, or put me on the e-mail list?

Best regards,

Ken

On Mon, Oct 7, 2019 at 9:20 AM Steve Wilson <[swilson@wilpark.org](mailto:swilson@wilpark.org)> wrote:

Ken,

Thanks for putting this back on my radar. We are embarking on a comprehensive plan for Gillson park as well as a coastal engineering study. Both of which could impact the dog beach area. So, at this time, I am putting this on hold and encourage you to participate in our planning process to advocate for the concept.

Thank you.

Steve Wilson

Executive Director

Wilmette Park District

847-256-9617

[swilson@wilpark.org](mailto:swilson@wilpark.org)

**From:** Kenneth Obel <[kenneth.obel@gmail.com](mailto:kenneth.obel@gmail.com)>  
**Sent:** Monday, October 7, 2019 9:00 AM  
**To:** Steve Wilson <[swilson@wilpark.org](mailto:swilson@wilpark.org)>  
**Cc:** Holly Specht <[hspecht@wilpark.org](mailto:hspecht@wilpark.org)>  
**Subject:** [external] Re: Suggestion for small dog-only beach run hours

Bumping this again. How about a trial of this come spring?

On Mon, May 6, 2019 at 1:06 PM Kenneth Obel <[kenneth.obel@gmail.com](mailto:kenneth.obel@gmail.com)> wrote:

Bumping this up to see if this is something we could see this year.

Very truly yours,

Ken Obel

On Sun, Apr 7, 2019 at 8:36 AM Kenneth Obel <[kenneth.obel@gmail.com](mailto:kenneth.obel@gmail.com)> wrote:

Steve,

Following up on this, wondering what you found out.

All the best,

Ken

On Mon, Mar 18, 2019 at 8:55 AM Stephen Wilson <[swilson@wilpark.org](mailto:swilson@wilpark.org)> wrote:

Ken,

Let me talk with my staff, do some research on the concept at other dog parks and how well it works or doesn't work, and then ultimately possibly either implementing it or discussing it with the board Lakefront Committee. Give me a couple weeks. If you don't hear from me, please don't be reluctant to give me a nudge, I won't take it personally!

Thanks.

Steve Wilson

Executive Director

Wilmette Park District

847-256-9617

[swilson@wilpark.org](mailto:swilson@wilpark.org)

**From:** Kenneth Obel <[kenneth.obel@gmail.com](mailto:kenneth.obel@gmail.com)>

**Sent:** Monday, March 18, 2019 8:53 AM

**To:** Stephen Wilson <[swilson@wilpark.org](mailto:swilson@wilpark.org)>

**Cc:** Holly Specht <[hspecht@wilpark.org](mailto:hspecht@wilpark.org)>

**Subject:** Suggestion for small dog-only beach run hours

Steve,

Now that the nicer weather is upon us, I wanted to make a suggestion.

Last year, when I was trying to arrange a get-together for small dog owners, I proposed the dog run at Gilson Beach as the location. What I heard overwhelmingly from small dog owners is that they do not purchase dog run tags, because their small dogs are uncomfortable or afraid of being with the many larger dogs that are generally using the dog run.

I think that this facility would be able to serve a larger number of resident dog owners if there were some designated hours – perhaps a couple each day – reserved for small dogs only (i.e., 15 pounds or less). This would be a great benefit, since as you know, the number of locations where dogs can run in the village is small. Not only would this benefit owners of small dogs (like me), but I would expect it to be marginally revenue enhancing for the Park District, since it would encourage dog owners who do not currently purchase dog run tags to do so.

Is this something that the park district would consider?

Very truly yours,

Ken Obel





# Memorandum

Date: April 19, 2021

To: Steve Wilson, Executive Director

From: Kristi Solberg, Superintendent of Parks and Planning

cc: Emily Guynn, Superintendent of Recreation

Re: Updated Dog Park information and potential locations

---

As a follow up to a Parks and Recreation Committee meeting on March 15<sup>th</sup>. The staff has prepared some additional details pertaining to the development of a community Dog Park within Howard Park and West Park.

**Howard Park-2** exhibits for the east end of the park.

**West Park**-still working with Village of Glenview on permitting

If you have any questions, please let me know.

## Potential Dog Park locations

- Howard Park-2 options







- **West Park-.56 acres and .38 acres-permit will be reviewed by Village of Glenview's Plan Commission at their last meeting in April, which is on or around Monday April 26<sup>th</sup>.**



## ENGINEER'S OPINION OF PROBABLE COST

Project Name: Howard Park Improvements

Location: Howard Park, Wilmette

Client: Wilmette Park District

GHA Project #: 5676.101

Prepared By: Jonathan Hagenow

Date: April 5, 2021

Checked By: Thomas Rhychlik, P.E.

Date: April 5, 2021



625 Forest Edge Drive, Vernon Hills, IL 60061

TEL 847.478.9700 ■ FAX 847.478.9701

www.gha-engineers.com

### Howard Park Improvements

ITEM	DESCRIPTION	UNIT	QUANTITY	UNIT PRICE	COST
<b>Dog Park (Large and Small)</b>					
1	Fence, Chainlink, 6'	LF	2000.00	\$ 60.00	\$ 120,000.00
2	Gates, 48 Inch	EACH	8.00	\$ 600.00	\$ 4,800.00
3	Water Fountain and Service	LS	1.00	\$ 5,000.00	\$ 5,000.00
4	Dog Agility Equipment	LS	1.00	\$ 10,000.00	\$ 10,000.00
5	Outfield Warning Track, with CA-7 Subgrade	SF	16000.00	\$ 4.00	\$ 64,000.00
6	PCC Sidewalk, 5 Inch, 5' Width	SF	900.00	\$ 25.00	\$ 22,500.00
7	Drainage Allowance	LS	1.00	\$ 10,000.00	\$ 10,000.00
8	Grass Restoration	ACRE	0.50	\$ 10,000.00	\$ 5,000.00
9	Landscaping	LS	1.00	\$ 2,000.00	\$ 2,000.00
<b>SUB-TOTAL:</b>					<b>\$ 243,300.00</b>

#### Parking Lot

6	Excavation	CY	150.00	\$ 50.00	\$ 7,500.00
7	Clearing and Grubbing	LS	1.00	\$ 2,500.00	\$ 2,500.00
8	Pavement Removal	SY	1600.00	\$ 5.00	\$ 8,000.00
9	Aggregate Stone Subbase, 6 Inch	SY	1000.00	\$ 8.00	\$ 8,000.00
10	HMA Surface Course, 1.75 Inch	TON	100.00	\$ 100.00	\$ 10,000.00
11	HMA Binder Course, 2.25 Inch	TON	130.00	\$ 100.00	\$ 13,000.00
12	PCC Sidewalk, 5 Inch, 5' Width	SF	1500.00	\$ 25.00	\$ 37,500.00
13	Grass Restoration	ACRE	0.10	\$ 10,000.00	\$ 1,000.00
14	ADA Allowance	LS	1.00	\$ 7,500.00	\$ 7,500.00
15	Drainage Allowance	LS	1.00	\$ 10,000.00	\$ 10,000.00
16	Landscaping Screening	LS	1.00	\$ 4,000.00	\$ 4,000.00
<b>SUB-TOTAL:</b>					<b>\$ 109,000.00</b>

\*Since Gewalt-Hamilton Associates Inc. Has No Control Over the Cost of Labor, Materials, or Equipment, or Over the Contractor's Methods of Determining Prices, or Over Competitive Bidding of Market Conditions, Opinions of Probable Costs, as Provided for Herein, Are to be Made on the Basis of Experience and Qualifications and Represent the Best Judgement as a Design professional Familiar with the Construction Industry. Gewalt Hamilton Associates, Inc. Cannot and Does Not Guarantee That Proposals, Bids, or The Construction Costs Will Not Vary From Opinions of Probable Cost Prepared for the Owner.

**SUB-TOTAL:** \$ 352,300.00  
**20% Contingency** \$ 70,460.00  
**TOTAL:** \$ 422,760.00

P:\5650-5699\5676.101 Wilmette PD Howard Park\EOPC\[2021-04-01 Howard Park Improven

#### PROFESSIONAL SERVICES

Geotechnical Report	\$ 1,600.00
Topography	\$ 3,600.00
Construction Documents	\$ 19,500.00
Landscape Architect	\$ 6,000.00
Engineering Approval	\$ 8,500.00
Bidding and Coordination	\$ 1,800.00
Construction Administration & Layout	\$ 9,500.00
Permit Closeout and As-Builts	\$ -
<b>TOTAL:</b>	<b>\$ 50,500.00</b>

**PROJECT BUDGET TOTAL:** \$ 473,260.00



# Memorandum

Date: April 19, 2021

To: Steve Wilson, Executive Director

From: Kristi Solberg, Superintendent of Parks and Planning

cc: Emily Guynn, Superintendent of Recreation

Re: Pickleball locations

---

There was a request from a committee member during the March Parks and Recreation Committee meeting for staff to prepare details pertaining to the development of outdoor Pickleball courts. Below are three sites, Hibbard Park, Vattman Park and West Park, which staff are presenting to help support the Committee discussion.

## **Hibbard Park-4 court and 6 court options**





**Vattman Park-4 court option**





**West Park-4 court option with 2 directions**

East/West option



North/South option





# Memorandum

Date: April 12, 2021

To: Emily Guynn, Superintendent of Recreation

From: Jason Stanislaw, Centennial General Manager

cc: Parks and Recreation Committee Members

Re: Pickleball

---



Over the last five (5) years, pickleball has grown dramatically across the United States. That coupled with the existing strength of the Wilmette Park District Racquet Sports Division, it is an optimal time to take a serious approach to offering pickleball to the community at large.

Throughout this memo, staff has outlined the current position of pickleball and ways to approach the game to align with the current Wilmette Park District Racquet Sports Division offerings.

## Pickleball Basic Facts:

- Originated in the Pacific Northwest in 1965
- Court is 20x44 feet, net is 34 inch net
- Players use a pickleball specific paddle and whiffle ball
- Singles and doubles are played competitively
  - Doubles is most commonly played recreationally and socially
- Learning curve has been proven to be significant short, especially for racquet athletes
- Social element to pickleball organically draws players together and creates community

## Pickleball Demographics (2019):

- 3.3 million players in the US
  - 2.2 million identified as casual players, playing less than 8 times per year
  - 1 million identified as core players, playing 8 or more times per year
- Average age of casual players is 33
- Average age of core players is 54

## Pickleball Growth:

- From 2016 to 2019, participation grew 23%. In 2020, participation grew 21.3%
- Core players under age 55 grew from 25% to 36%
- Casual players under age 55 grew from 78% to 84%
  - These percentages indicate the average player age is coming down
- Pickleball growth rates parallel the growth of paddle in the past 5 years in Chicagoland

**Pickleball Facility:**

Initially pickleball was played in open gym space or in public outdoor spaces on temporarily lined courts. Over the last several years, there has been a significant increase in pickleball specific courts and facilities in parks and clubs. The most successful racquet sports operators have integrated pickleball into their other racquet offerings.

**Proposed Operational Model:**

Given Wilmette Park District's success in tennis and paddle operations staff has confidence that those club based models resonate with the community.

A well-organized, low entry rate pickleball club will round out the Racquet Sports Division.

In this model, consideration will be given to maintaining an affordable membership rate, while developing staff driven programming for the community. Based on the heritage of lesson programming, growth of lesson programs in pickleball, and feedback from the community, staff anticipates solid demand in lessons. That would include both introduction to pickleball and level appropriate skill development. Organized playgroups and court reservations would round out the activities in this model. These activities could become a significant revenue stream.

**Recommendation:**

With that backdrop staff believes there is an excellent opportunity to enter the pickleball market. Wilmette has an extremely active and dedicated racquet sports community. Both indoor and outdoor tennis programs continue to flourish. Paddle has taken a significant step forward this season. Staff believes that adding and integrating a third racquet sport, particularly with the growth rate of pickleball, would enrich the racquet sports offerings, and widen the reach of the Racquet Sports Division in the community.

**Enclosed:**

- Area Pickleball Courts
- Financial Modeling

Area Pickleball Courts

Organization Name	Location	Indoor/Outdoor	Dedicated Pickle / Combined Use	Number of Courts
City of Evanston <i>Combined: 9</i>	Lovelace Park	Outdoor	Combined	6
	Chandler-Newberger Center	Indoor	Combined	3
Glenbrook Racquet Club <i>Dedicated: 6</i>	Glenbrook Racquet Club	Indoor	Dedicated	6
Glenview Park District <i>Dedicated: 8</i> <i>Combined: 5</i>	Flick Park	Outdoor	Dedicated	6
	Crowley Park	Outdoor	Combined	2
	Rugen Park	Outdoor	Combined	3
	Thomas J. Richardson Park	Outdoor	Dedicated	2
Michigan Shores <i>Combined: 4</i>	Michigan Shores	Outdoor	Combined w/Lights	4
Northbrook Park District <i>Dedicated: 6</i> <i>Combined: 15</i>	Crestwood Park	Outdoor	Combined	4
	Stonegate Park	Outdoor	Dedicated	6
	Techny Prairie Center	Indoor	Combined	4
	Willimasburg Square Park	Outdoor	Combined	3
	Wood Oaks Green Park	Outdoor	Combined	4
Northfield Park District <i>Dedicated: 6</i>	Willow Park	Outdoor	Dedicated	6
Skokie Park District <i>Dedicated: 6</i> <i>Combined: 7</i>	Hamlin Park	Outdoor	Combined	1
	Laramie Park	Outdoor	Dedicated w/Lights	2
	Lauth Park	Outdoor	Combined	2
	Lawler Park	Outdoor	Dedicated	4
	Lockwood Park	Outdoor	Combined	2
	Terminal Park	Outdoor	Combined	2
Winnetka Community House <i>Combined: 2</i>	Community House	Indoor	Combined	2

## Pickleball Financial Modeling

	4 Court		6 Court	
<b>Revenue</b>				
Memberships		240		360
Resident	\$	17,100	\$	25,650
Non-resident	\$	7,200	\$	10,800
Court rental	\$	48,384	\$	72,576
Group lessons	\$	80,640	\$	80,640
Private lessons	\$	10,080	\$	10,080
<b>Total Revenue</b>	\$	163,404	\$	199,746
<b>Expense</b>				
PT Admin	\$	37,800	\$	37,800
PT Instructor Admin	\$	5,000	\$	5,000
PT Instructor Group	\$	35,280	\$	35,280
PT Instructor Private	\$	5,880	\$	5,880
Electric	\$	5,300	\$	8,000
Program Supplies	\$	1,000	\$	1,000
<b>Total Expense</b>	\$	90,260	\$	92,960
<b>Net Revenue</b>	\$	73,144	\$	106,786

Based on final pickleball court location the following should be considered in the financial model, facility rentals and pro shop



# Memorandum

Date: April 16, 2021

To: Members of the Parks & Recreation Committee  
Commissioner Mike Murdock, Chair  
Commissioner Cecilia Clarke  
Commissioner Amy Wolfe

From: Steve Wilson

cc: Sheila Foy  
Emily Guynn  
Kristi Solberg

Re: Keay Nature Center

---

At the request of Commissioner Murdock, and following discussions with the Ouilmette Foundation regarding the funds raised for Keay Nature Center in the past, I have included the prior plans, but the initial plan and the final plan approved by a prior committee, along with their related costs. I will walk the committee through both plans as well as the costs and the history of the discussion between the two plans so everyone has the entire history. I will then answer any questions the Committee may have.

If you have any questions, please let me know.



SEPTEMBER 15 CONCEPT PLAN





Scope Item	Quantity	Units	Cost	Budget	Cost	Budget
Demolition						
Planting (trees and shrubs to be removed), Paving, Bridge, Etc.	115,000	SF	\$ 0.10	11,500	\$ 0.50	57,500
<b>Demolition Total</b>	<b>115,000</b>	<b>SF</b>		<b>11,500</b>		<b>57,500</b>
HARDSCAPE						
Parking	4,800	SF	\$ 8.00	38,400	\$ 25.00	120,000
Low: asphalt paving and concrete curb						
High: permeable pavers and concrete curb						
Plaza/Sidewalk areas	1,200	SF	\$ 10.00	12,000	\$ 13.00	15,600
Achitectural finish concrete						
Primary Trails	16,000	SF	\$ 4.50	72,000	\$ 7.50	120,000
Stabilized decomposed granite (dg)						
Secondary Trails	4,000	SF	\$ 4.50	18,000	\$ 7.50	30,000
Stabilized decomposed granite (dg)						
Site Seatwalls	100	LF	\$ 250.00	25,000	\$ 400.00	40,000
Low: Architectural cast in place concrete, approximately 18" tall						
High: Locally sourced boulders, approximately 2'x2'x5'						
Shade Structure	300	SF	\$ 30.00	9,000	\$ 60.00	18,000
Low: Rustic Wood, High: Custom Metal/IPE						
Pedestrian Bridge	50	LF	\$ 300.00	15,000	\$ 500.00	25,000
Low: Rustic Oak, High: IPE decking						
Pedestrian Boardwalk	85	LF	\$ 250.00	21,250	\$ 400.00	34,000
Low: Rustic Oak, High: IPE decking						
Entry Fence	75	LF	\$ 30.00	2,250	\$ 100.00	7,500
Low: Chain-link Fence and Child-Proof Locks at Entries						
High: Custom Metal Fence and Child-Proof Locks at Entries						
<b>Hardscape Total:</b>	<b>26,610</b>			<b>212,900</b>		<b>410,100</b>
PLANTING						
Lawn areas	17,600	SF	\$ 0.75	13,200	\$ 2.00	35,200
Low: sod in main areas, periphery hydroseed, irrigation included						
High: sod in all areas, irrigation included						
No-Mow Lawn Areas (fescue)	10,000	SF	\$ 0.35	3,500	\$ 1.50	15,000
Low: hydroseed						
High: sod in all areas						
Planting Areas at Site Periphery	50,600	SF	\$ 4.50	227,700	\$ 8.00	404,800
Low: Primarily Deciduous Shrubs and mix of perenials						
High: Premium Shrubs and perennials						
Intensive Planting Areas	20,000	SF	\$ 10.00	200,000	\$ 16.00	320,000
Low: Primarily Deciduous Shrubs and mix of perenials						
High: Premium Shrubs and perennials						
Native Planting Areas	35,000	SF	\$ 2.50	87,500	\$ 4.00	140,000
Low: seed native grasses and perennials						
High: seed and plug native grasses and perennials						
Wetland Planting	30,000	SF	\$ 4.00	120,000	\$ 8.00	240,000
Low: low intensity seed and plugs						
High: closely planted plugs and shrubs						
Trees (4" caliper)	25	EA	\$ 1,200.00	30,000	\$ 1,600.00	40,000
Low: Readily available tree - soil and tree storage included						
High: Mix of readily available trees and permium trees - soil and tree storage included						
Trees (2" caliper)	35	EA	\$ 600.00	21,000	\$ 900.00	31,500
Low: Readily available tree - soil and tree storage included						
High: Mix of readily available trees and permium trees - soil and tree storage included						
<b>Planting Total:</b>	<b>163,260</b>			<b>702,900</b>		<b>1,226,500</b>
SOILS AND GRADING						
Pond Mass Grading	1,500	CU YD	\$ 7.00	10,500	\$ 9.00	13,500
Deeper Pond and Balanced Fill in mounds around site						
Wetland Mass Grading	1,200	CU YD	\$ 7.00	8,400	\$ 9.00	10,800
Excavate Wetland and Balance Fill in mounds around site						
Soil at Site Periphery and Intensive Planting Areas	5,000	SF	\$ 1.00	5,000	\$ 1.50	7,500
6" of topsoil						
Drainage	1,250	LF	\$ 12.00	15,000	\$ 15.00	18,750
Soil Total:	8,950					
Pond Mass Grading						
Pond Liner	4,000	SF	\$ 2.00	8,000	\$ 3.50	14,000
Plastic pond liner and edging around perimeter (reinforced polyethylene, EPDM or butyl liner)						
<b>Pond Total</b>	<b>4,000</b>			<b>8,000</b>		<b>14,000</b>
SITE FURNISHINGS						
Bench	15	EA	\$ 2,500.00	37,500	\$ 3,000.00	45,000
Trash/Recycling Receptacle	2	EA	\$ 1,200.00	2,400	\$ 2,000.00	4,000
Salaveaged Log Bench	8	EA	\$ 2,500.00	20,000	\$ 3,500.00	28,000

Boulders	50	EA	\$ 1,000.00	50,000	\$ 2,000.00	100,000
Bird Habitat/Houses	1	LS	\$ 1,000.00	1,000	\$ 5,000.00	5,000
Entry Monument/Sign	1	LS	\$ 3,000.00	3,000	\$ 6,000.00	6,000
Wayfinding Signage	1	LS	\$ 5,000.00	5,000	\$ 15,000.00	15,000
Educational Signage	1	LS	\$ 5,000.00	5,000	\$ 15,000.00	15,000
Maintenace Shed Replacement	1	LS	\$ 5,000.00	5,000	\$ 15,000.00	15,000
Portable Restroom Relocation	1	EA	\$ 750.00	750	\$ 1,500.00	1,500
<b>Site Furnishings Total:</b>				<b>129,650</b>		<b>234,500</b>
<b>SUBTOTAL</b>				<b>1,064,950</b>		<b>1,942,600</b>
<b>5% Construction Management</b>				<b>53,248</b>		<b>97,130</b>
<b>18% Contingency</b>				<b>191,691</b>		<b>349,668</b>
<b>GRAND TOTAL:</b>				<b>1,309,889</b>		<b>2,389,398</b>

**Total Site Area:**
205865 SF
Cost/sf
\$ 6.36
\$ 11.61



# PROPOSED IMPROVEMENTS - BASE PLAN

- TREES - EXISTING TO REMAIN
- TREES - PROPOSED (3" CALIPER, TYP)
- TREES - TO BE REMOVED (REMOVE ALL DEAD OR EXTREMELY POOR QUALITY TREES, SALVAGE APPLICABLE TRUNKS / STUMPS FOR BENCH REUSE / EDUCATION)
- PROPOSED TRAIL - STABILIZED DG ELEVATED FROM FLOOD LEVEL
- ENHANCED PLANTING AT ENTRYWAY - HYDRANGEAS, JUNIPERS, GRASSES, ETC.
- RESTORED SAVANNAH - GRASS + PERENNIAL MIX
- ENTRY SIGN - SCALE VISIBLE FROM STREET
- PROPOSED BENCH
- ENTRY FENCE + GATE REPLACEMENT
- EXISTING DRINKING FOUNTAIN
- RELOCATED TRASH AND RECYCLING
- REMOVE AND DISPOSE OF WOOD PAVING - REPLACE WITH PLANTING
- NEIGHBORHOOD ACCESS POINTS (GATE IMPROVEMENTS + PAVING ACCESS)
- EXISTING POND - TO REMAIN IN PLACE AS IS





# PROPOSED IMPROVEMENTS - ENHANCED PLAN





Wilmette Park District  
 Keya Nature Learning Center Proposed Project Costs  
 Combined and Phased Based and Enhanced Plans

Phase	Plan	Scope Item	Quantity	Units	Low Estimate		High Estimate		Comments
					Cost	Budget	Cost	Budget	
		<b>DEMOLITION</b>							
1	Base	Tree Removal, Wood Wall, Planting Fence, Entry Fence, Wood Paving	9,150	SF	\$0.50	\$4,575	\$1.50	\$13,725	Can be reduced by not doing entry fence
1	Enhanced	Existing Trail DG Removal	12,800	SF	\$0.10	\$1,280	\$0.50	\$6,400	
		<b>Demolition Total:</b>				<b>\$5,855</b>		<b>\$20,125</b>	
		<b>HARDSCAPE</b>							
2	Base	Entry Plaza	2,650	SF	\$10.00	\$26,500	\$12.00	\$31,800	
		Architectural finish concrete							
2	Base	Trails	6,000	SF	\$4.50	\$27,000	\$7.00	\$42,000	Can be reduced by reducing add'l trails
		Stabilized decomposed granite (dg)							
1	Base	Entry Fence + Gates	75	LF	\$30.00	\$2,250	\$60.00	\$4,500	Can be reduced or eliminated
		Low: Chain-link Fence and Child-Proof Locks at Entries							
		High: Metal Fence and Child-Proof Locks at Entries							
1	Enhanced	Trails	12,800	SF	\$4.50	\$57,600	\$7.00	\$89,600	Primary trail
		Stabilized decomposed granite (dg)							
		<b>Hardscape Total:</b>				<b>\$113,350</b>		<b>\$167,900</b>	
		<b>PLANTING</b>							
2	Base	Intensive Planting Areas	4,420	SF	\$8.00	\$35,360	\$12.00	\$53,040	Recommend lower cost approach
		Low: Primarily Deciduous Shrubs and mix of perennials							
		High: Premium Shrubs and perennials							
1	Base	Native Planting Areas	15,000	SF	\$3.00	\$45,000	\$5.00	\$75,000	Recommend lower cost approach
		Low: seed native grasses and perennials							
		High: seed and plug native grasses and perennials							
MP	Base	Trees (4" caliper)	13	EA	\$900.00	\$11,700	\$1,300.00	\$16,900	Plant over time by Memorial Program
		Low: Readily available tree - soil and tree storage included							
		High: Mix of readily available trees and premium trees - soil and tree storage included							
MP	Base	Trees (2" caliper)	7	EA	\$500.00	\$3,500	\$800.00	\$5,600	Plant over time by Memorial Program
		Low: Readily available tree - soil and tree storage included							
		High: Mix of readily available trees and premium trees - soil and tree storage included							
3	Enhanced	Intensive Planting Areas	1,200	SF	\$8.00	\$9,600	\$12.00	\$14,400	Recommend lower cost approach
		Low: Primarily Deciduous Shrubs and mix of perennials							
		High: Premium Shrubs and perennials							
3	Enhanced	Native Planting Areas	10,805	SF	\$3.00	\$32,415	\$5.00	\$54,025	Recommend lower cost approach
		Low: seed native grasses and perennials							
		High: seed and plug native grasses and perennials							
MP	Enhanced	Trees (4" caliper)	13	EA	\$900.00	\$11,700	\$1,300.00	\$16,900	Plant over time by Memorial Program
		Low: Readily available tree - soil and tree storage included							
		High: Mix of readily available trees and premium trees - soil and tree storage included							
MP	Enhanced	Trees (2" caliper)	8	EA	\$500.00	\$4,000	\$800.00	\$6,400	Plant over time by Memorial Program
		Low: Readily available tree - soil and tree storage included							
		High: Mix of readily available trees and premium trees - soil and tree storage included							
		<b>Planting Total:</b>				<b>\$153,275</b>		<b>\$242,265</b>	
		<b>SITE FURNISHINGS</b>							
MP	Base	Bench	10	EA	\$2,500.00	\$25,000	\$3,000.00	\$30,000	Added over time by Memorial Program
1	Base	Trash / Recycling Receptacle	2	EA	\$1,200.00	\$2,400	\$1,800.00	\$3,600	
MP	Base	Salvaged Log Bench	7	EA	\$2,500.00	\$17,500	\$3,500.00	\$24,500	Added over time by Memorial Program
MP	Base	Bird Habitat / Houses	1	LS	\$1,000.00	\$1,000	\$5,000.00	\$5,000	Added over time by Memorial Program
3	Base	Entry Monument Sign	1	LS	\$3,000.00	\$3,000	\$6,000.00	\$6,000	When work is complete
		<b>Site Furnishings Total:</b>				<b>\$48,900</b>		<b>\$69,100</b>	
		<b>SUBTOTAL:</b>				<b>\$321,380</b>		<b>\$499,390</b>	
		<b>5% Construction Management</b>				<b>\$16,069</b>		<b>\$24,970</b>	
		<b>18% Contingency</b>				<b>\$57,848</b>		<b>\$89,890</b>	
		<b>GRAND TOTAL:</b>				<b>\$395,297</b>		<b>\$614,250</b>	

Phase 1						\$113,105		\$192,825
Phase 2						\$88,860		\$126,840
Phase 3						\$45,015		\$74,425
MP						\$74,400		\$105,300
Total						\$321,380		\$499,390



# Memorandum

Date: April 16, 2021

To: Members of the Parks & Recreation Committee  
Commissioner Mike Murdock, Chair  
Commissioner Cecilia Clarke  
Commissioner Amy Wolfe

From: Steve Wilson

cc: Sheila Foy  
Emily Guynn  
Kristi Solberg

Re: Solar Panels at the Community Recreation Center

---

At a prior committee meeting, the topic of looking at solar panels at the Community Recreation Center was discussed. As background, the concept was pursued by staff about 5 years prior, but ultimately did not come to fruition due to the grant funding for such products getting eliminated in Illinois.

Based on the discussion with the Committee, staff has been researching options of solar at the community center, and attached are two different proposals. One is an option is a Power Purchase Agreement (PPA) which would not cost the District any upfront expenditure. Under this agreement, the power savings generated by the panels would be mostly consumed by the company that pays to install the panels, but some of the savings would come to the District. The other option is one in which the District would pay for the upfront costs, and then take advantage of all the savings.

Staff will walk the committee through both options, which you can find attached to this memo.

If you have any questions, please let me know.

**Prepared for:**

Wilmette Community Recreation Center  
3000 Glenview Rd  
Wilmette, IL 60091

**Prepared by:**

Verde Solutions, LLC  
2211 N. Elston Ave. Suite 208  
Chicago, IL 60614  
800.541.1137  
leads@verdesolutions.com

Verde Solutions is pleased to present this renewable energy proposal for your review. This proposal is based on preliminary information to provide an initial suggested system configuration, size, and budgetary estimate. A final proposal with sizing and firm pricing will be provided after all required information has been received and validated.

**Input Parameters & Assumptions**

Current Annual Energy Consumption	1,355,656 kWh / year
Avoided Utility Cost	\$0.060/kWh

**System Overview**

Based on review of your usage information, available space for installation, and utility constraints, the proposed system has a peak power rating of 591.2 kW-DC. The system is estimated to produce 718,789 kWh/year which will offset approximately 53% of your current annual energy consumption. Solar production estimates were made using Helioscope, published by Folsom Labs.

System Size	1,478 modules
System Module Power Capacity	591.2 kW-DC
Projected Annual Energy Production	718,789 kWh / year
Ratio of Current Consumption Offset with Solar System	53%
Mounting Style	Mixed
Estimated Useful Lifespan	30 Years

**Investment Overview**

Due to the non-taxable status of your institution, a Power Purchase Agreement, or PPA may be the right option for you. By having a third party investor take on the installation cost, they can take advantage of the government tax credits and incentives, and you can see a reduction in your energy bill when they sell you the energy from the system at a reduced rate.

PPA Rate	\$0.058/kWh
----------	-------------

## Economic Summary

Annual Energy Savings	\$42,852 year 1
Reduction in Energy Bill	26.1% reduction
Payback Period	0.0 Years

- **Annual Energy Savings** - The amount of money saved on utility bill the first year the system is installed. This value is expected to increase over time as the cost of energy increases.
- **Reduction in Energy Bill** - The expected average percentage an electric bill will decrease the first year. Due to seasonal variance, this value will change month to month.
- **Payback Period** - The length of time required to recover the cost of the investment.

## Project Installation

Implementation of the project can begin immediately starting with a detailed site assessment from one of our field engineers moving into full engineering and design. Concurrently, Verde Solutions will work with you and handle all required building & electrical permits, utility interconnection applications, incentive applications (if applicable) and any other needs as they arise.

Materials will be ordered after the design is finalized. Each project is designed and built to suit. Once the materials are on-site, installation begins with final system testing and commissioning as the last steps.

## Disclaimer

This proposal includes forecasts, projections and other predictive statements resulting from an analysis by Verde Solutions of the information provided by the prospective client as well as information from Verde Solutions' operations and what is available within the marketplace. Prospective clients should recognize that the forecasts, projections and other predictive statements stated herein, although based upon information and assumptions that Verde Solutions believes to be viable and accurate, are projections and that Verde Solutions does not provide any guarantees for the achievement by the prospective client of the projections noted herein. The prospective client must realize that in the development of any projection there are certain factors that are unforeseen at the time the projection is made and thereby there are certain risks involved that provide for uncertainty. The prospective client's actual performance results may differ from those projected in this proposal. Therefore, there is no guarantee presented or implied as to the accuracy of any specific forecast, projection or predictive statement contained herein.

Calculations illustrating tax savings and deductions are estimates only. Please consult your tax expert regarding tax advantages specifically available for your organization.

Solar Renewable Energy Credits (SRECs) are administered on the state level and are subject to availability based on state specific program limits and participation.

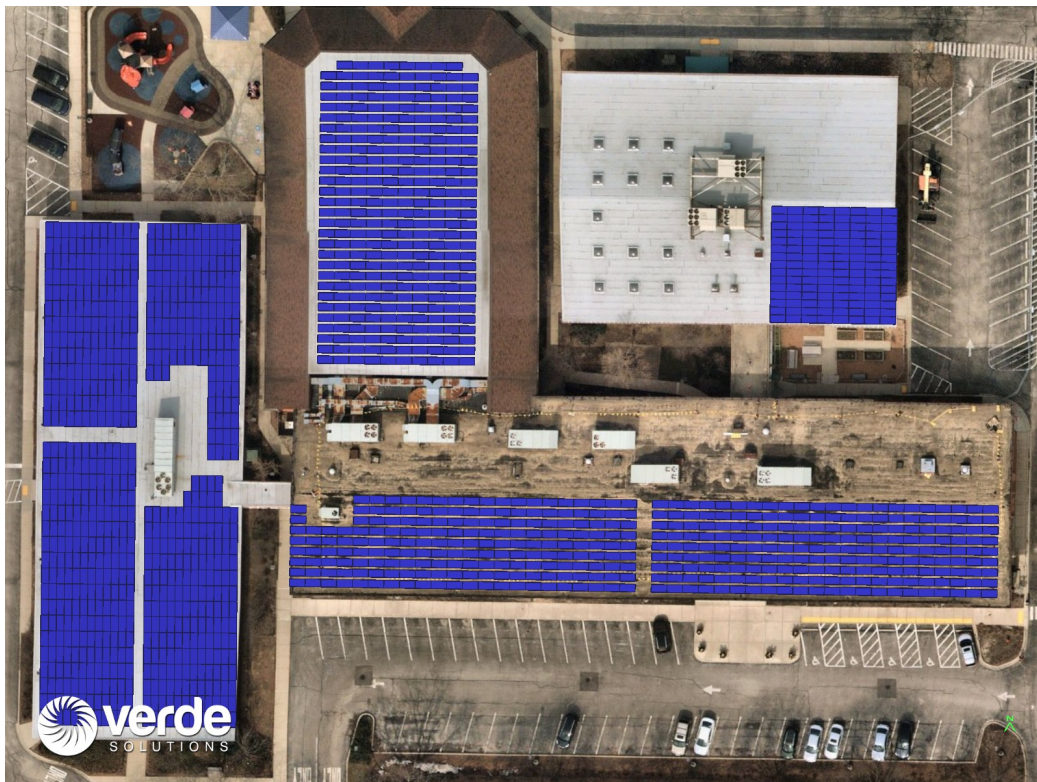
Ground based systems may require additional investments in fencing and/or landscaping, which are not included.

Upon conclusion of the PPA contract term, the PPA can either be extended, or the system may be purchased at the greater value of the Fair Market Value or the value outlined in the termination schedule of the provided PPA contract. These costs may not be reflected in the cash flow provided below.

## System Configuration

Verde Solutions has adopted a modular approach to project sizing by scaling projects with pre-engineered and proven subsystems. This approach leads to highly repeatable results, maximizes cost efficiency and offers the greatest value. Detailed engineering will occur upon project acceptance. Final engineering analysis may alter the following system outline; however, the final system will be equivalent or superior to what is presented below.

<b>System Size &amp; Configuration</b>	440.0 kW-AC power capacity (grid) 591.2 kW-DC power capacity (solar modules) 1.34 DC/AC ratio
<b>Solar PV Modules (Panels)</b>	Tier 1 commercial polycrystalline silicon panels 400 Watt/module power capacity 1,478 modules in system
<b>Inverter(s)</b>	Tier 1 commercial string inverter 10 kW-AC inverter capacity 44 inverters in system 3 - Phase Output
<b>Mounting System</b>	Tier 1 commercial mounting system All necessary structural engineering included
<b>Production Monitoring</b>	Solar Log, with online monitoring & smartphone access Flat panel display monitor can be added for in-building showcase of energy



*The above image is a preliminary concept based on initial information and satellite imagery*

Cash Flow Analysis					
Years	PPA Payments	Electric Bill Savings	PV Generation (kWh)	Total Cash Flow	Cumulative Cash Flow
Upfront	-	-	-	-	-
1	-\$41,690	\$42,852	718,789	\$1,162	\$1,162
2	-\$41,896	\$43,917	715,195	\$2,021	\$3,183
3	-\$42,102	\$45,007	711,601	\$2,905	\$6,087
4	-\$42,309	\$46,123	708,007	\$3,814	\$9,902
5	-\$42,515	\$47,266	704,413	\$4,751	\$14,652
6	-\$42,721	\$48,435	700,819	\$5,714	\$20,367
7	-\$42,927	\$49,632	697,225	\$6,706	\$27,072
8	-\$43,133	\$50,858	693,631	\$7,725	\$34,797
9	-\$43,338	\$52,112	690,037	\$8,774	\$43,571
10	-\$43,544	\$53,396	686,443	\$9,852	\$53,423
11	-\$43,749	\$54,710	682,850	\$10,961	\$64,385
12	-\$43,954	\$56,055	679,256	\$12,101	\$76,485
13	-\$44,158	\$57,431	675,662	\$13,272	\$89,758
14	-\$44,363	\$58,839	672,068	\$14,476	\$104,234
15	-\$44,567	\$60,280	668,474	\$15,713	\$119,947
16	-\$44,770	\$61,755	664,880	\$16,984	\$136,932
17	-\$44,974	\$63,264	661,286	\$18,290	\$155,221
18	-\$45,177	\$64,807	657,692	\$19,631	\$174,852
19	-\$45,379	\$66,387	654,098	\$21,008	\$195,860
20	-\$45,581	\$68,003	650,504	\$22,422	\$218,281
21	-\$45,782	\$69,656	646,910	\$23,873	\$242,155
22	-\$45,983	\$71,347	643,316	\$25,363	\$267,518
23	-\$46,184	\$73,077	639,722	\$26,893	\$294,411
24	-\$46,384	\$74,846	636,128	\$28,463	\$322,874
25	-\$46,583	\$76,656	632,534	\$30,073	\$352,947
26	-	\$78,507	628,940	\$78,507	\$431,454
27	-	\$80,400	625,346	\$80,400	\$511,854
28	-	\$82,336	621,752	\$82,336	\$594,191
29	-	\$84,316	618,159	\$84,316	\$678,507
30	-	\$86,341	614,565	\$86,341	\$764,847
Totals:	-\$1,103,762	\$1,868,610	20,000,304	\$764,847	-

Inputs & Assumptions	
Avoided Utility Cost	\$0.060/kWh
Annual Energy Consumption (kWh)	1,355,656 kWh
PPA Inflation Rate	1%
Year 1 Energy Savings	\$42,852
kW-DC	591.2 kW-DC
Projected Annual Energy Production	718,789 kWh
Utility Inflation Rate	3.0%
Solar Degradation Rate	0.50%
Soiling Losses	2% of annual production



**Prepared for:**

Wilmette Community Recreation Center  
3000 Glenview Rd  
Wilmette, IL 60091

**Prepared by:**

Verde Solutions, LLC  
2211 N. Elston Ave. Suite 208  
Chicago, IL 60614  
800.541.1137  
leads@verdesolutions.com

Verde Solutions is pleased to present this renewable energy proposal for your review. This proposal is based on preliminary information to provide an initial suggested system configuration, size, and budgetary estimate. A final proposal with sizing and firm pricing will be provided after all required information has been received and validated.

**Input Parameters & Assumptions**

Current Annual Energy Consumption	1,355,656 kWh / year
Avoided Utility Cost	\$0.060/kWh

**System Overview**

Based on review of your usage information, available space for installation, and utility constraints, the proposed system has a peak power rating of 591.2 kW-DC. The system is estimated to produce 718,789 kWh/year which will offset approximately 53% of your current annual energy consumption. Solar production estimates were made using Helioscope, published by Folsom Labs.

System Size	1,478 modules
System Module Power Capacity	591.2 kW-DC
Projected Annual Energy Production	718,789 kWh / year
Ratio of Current Consumption Offset with Solar System	53%
Mounting Style	Mixed
Estimated Useful Lifespan	30 Years

**Investment Overview**

Due to the non-taxable status of your institution, a Power Purchase Agreement, or PPA may be the right option for you. By having a third party investor take on the installation cost, they can take advantage of the government tax credits and incentives, and you can see a reduction in your energy bill when they sell you the energy from the system at a reduced rate.

PPA Rate	\$0.06/kWh
----------	------------

## Economic Summary

Annual Energy Savings	\$42,852 year 1
Reduction in Energy Bill	26.1% reduction
Payback Period	1.3 Years

- **Annual Energy Savings** - The amount of money saved on utility bill the first year the system is installed. This value is expected to increase over time as the cost of energy increases.
- **Reduction in Energy Bill** - The expected average percentage an electric bill will decrease the first year. Due to seasonal variance, this value will change month to month.
- **Payback Period** - The length of time required to recover the cost of the investment.

## Project Installation

Implementation of the project can begin immediately starting with a detailed site assessment from one of our field engineers moving into full engineering and design. Concurrently, Verde Solutions will work with you and handle all required building & electrical permits, utility interconnection applications, incentive applications (if applicable) and any other needs as they arise.

Materials will be ordered after the design is finalized. Each project is designed and built to suit. Once the materials are on-site, installation begins with final system testing and commissioning as the last steps.

## Disclaimer

This proposal includes forecasts, projections and other predictive statements resulting from an analysis by Verde Solutions of the information provided by the prospective client as well as information from Verde Solutions' operations and what is available within the marketplace. Prospective clients should recognize that the forecasts, projections and other predictive statements stated herein, although based upon information and assumptions that Verde Solutions believes to be viable and accurate, are projections and that Verde Solutions does not provide any guarantees for the achievement by the prospective client of the projections noted herein. The prospective client must realize that in the development of any projection there are certain factors that are unforeseen at the time the projection is made and thereby there are certain risks involved that provide for uncertainty. The prospective client's actual performance results may differ from those projected in this proposal. Therefore, there is no guarantee presented or implied as to the accuracy of any specific forecast, projection or predictive statement contained herein.

Calculations illustrating tax savings and deductions are estimates only. Please consult your tax expert regarding tax advantages specifically available for your organization.

Solar Renewable Energy Credits (SRECs) are administered on the state level and are subject to availability based on state specific program limits and participation.

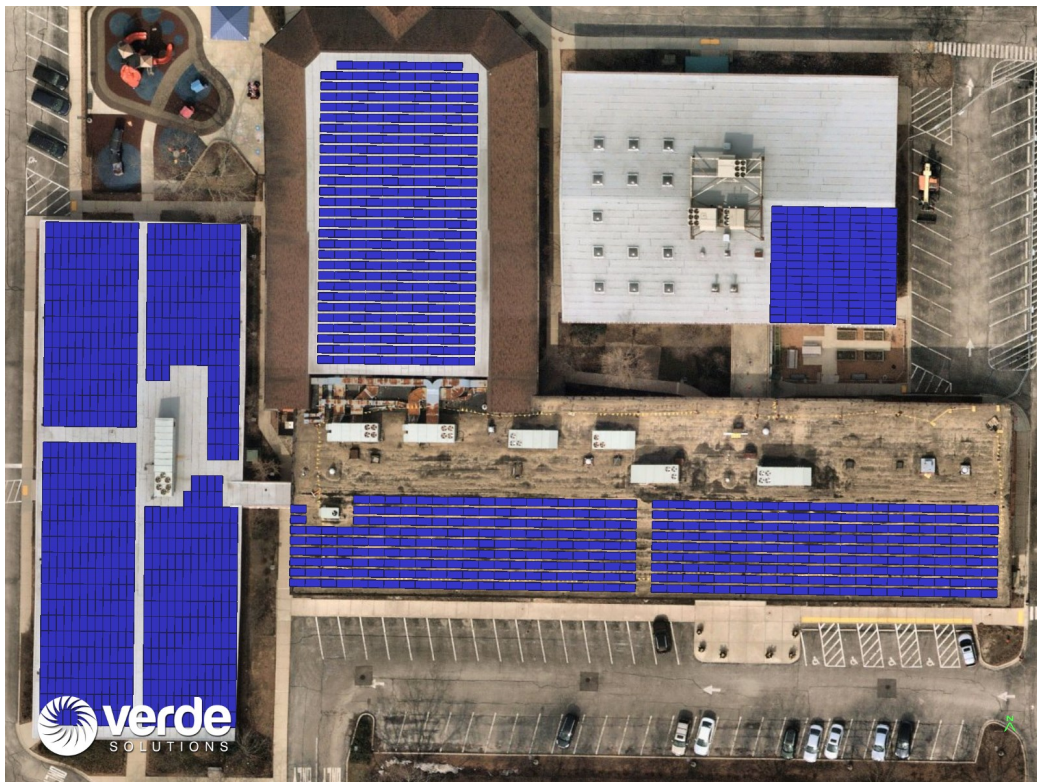
Ground based systems may require additional investments in fencing and/or landscaping, which are not included.

Upon conclusion of the PPA contract term, the PPA can either be extended, or the system may be purchased at the greater value of the Fair Market Value or the value outlined in the termination schedule of the provided PPA contract. These costs may not be reflected in the cash flow provided below.

## System Configuration

Verde Solutions has adopted a modular approach to project sizing by scaling projects with pre-engineered and proven subsystems. This approach leads to highly repeatable results, maximizes cost efficiency and offers the greatest value. Detailed engineering will occur upon project acceptance. Final engineering analysis may alter the following system outline; however, the final system will be equivalent or superior to what is presented below.

<b>System Size &amp; Configuration</b>	440.0 kW-AC power capacity (grid) 591.2 kW-DC power capacity (solar modules) 1.34 DC/AC ratio
<b>Solar PV Modules (Panels)</b>	Tier 1 commercial polycrystalline silicon panels 400 Watt/module power capacity 1,478 modules in system
<b>Inverter(s)</b>	Tier 1 commercial string inverter 10 kW-AC inverter capacity 44 inverters in system 3 - Phase Output
<b>Mounting System</b>	Tier 1 commercial mounting system All necessary structural engineering included
<b>Production Monitoring</b>	Solar Log, with online monitoring & smartphone access Flat panel display monitor can be added for in-building showcase of energy



*The above image is a preliminary concept based on initial information and satellite imagery*

Cash Flow Analysis					
Years	PPA Payments	Electric Bill Savings	PV Generation (kWh)	Total Cash Flow	Cumulative Cash Flow
Upfront	-	-	-	-	-
1	-\$43,127	\$42,852	718,789	-\$275	-\$275
2	-\$42,912	\$43,917	715,195	\$1,005	\$730
3	-\$42,696	\$45,007	711,601	\$2,311	\$3,041
4	-\$42,480	\$46,123	708,007	\$3,643	\$6,683
5	-\$42,265	\$47,266	704,413	\$5,001	\$11,684
6	-\$42,049	\$48,435	700,819	\$6,386	\$18,070
7	-\$41,834	\$49,632	697,225	\$7,799	\$25,869
8	-\$41,618	\$50,858	693,631	\$9,240	\$35,109
9	-\$41,402	\$52,112	690,037	\$10,710	\$45,819
10	-\$41,187	\$53,396	686,443	\$12,209	\$58,028
11	-\$40,971	\$54,710	682,850	\$13,739	\$71,767
12	-\$40,755	\$56,055	679,256	\$15,299	\$87,066
13	-\$40,540	\$57,431	675,662	\$16,891	\$103,957
14	-\$40,324	\$58,839	672,068	\$18,515	\$122,472
15	-\$40,108	\$60,280	668,474	\$20,172	\$142,644
16	-\$39,893	\$61,755	664,880	\$21,862	\$164,506
17	-\$39,677	\$63,264	661,286	\$23,586	\$188,092
18	-\$39,462	\$64,807	657,692	\$25,346	\$213,438
19	-\$39,246	\$66,387	654,098	\$27,141	\$240,579
20	-\$39,030	\$68,003	650,504	\$28,972	\$269,552
21	-\$38,815	\$69,656	646,910	\$30,841	\$300,393
22	-\$38,599	\$71,347	643,316	\$32,748	\$333,141
23	-\$38,383	\$73,077	639,722	\$34,693	\$367,834
24	-\$38,168	\$74,846	636,128	\$36,678	\$404,513
25	-\$37,952	\$76,656	632,534	\$38,704	\$443,217
26	-	\$78,507	628,940	\$78,507	\$521,724
27	-	\$80,400	625,346	\$80,400	\$602,124
28	-	\$82,336	621,752	\$82,336	\$684,460
29	-	\$84,316	618,159	\$84,316	\$768,776
30	-	\$86,341	614,565	\$86,341	\$855,117
Totals:	-\$1,013,492	\$1,868,610	20,000,304	\$855,117	-

Inputs & Assumptions

Avoided Utility Cost	\$0.060/kWh
Annual Energy Consumption (kWh)	1,355,656 kWh
PPA Inflation Rate	0%
Year 1 Energy Savings	\$42,852
kW-DC	591.2 kW-DC
Projected Annual Energy Production	718,789 kWh
Utility Inflation Rate	3.0%
Solar Degradation Rate	0.50%
Soiling Losses	2% of annual production